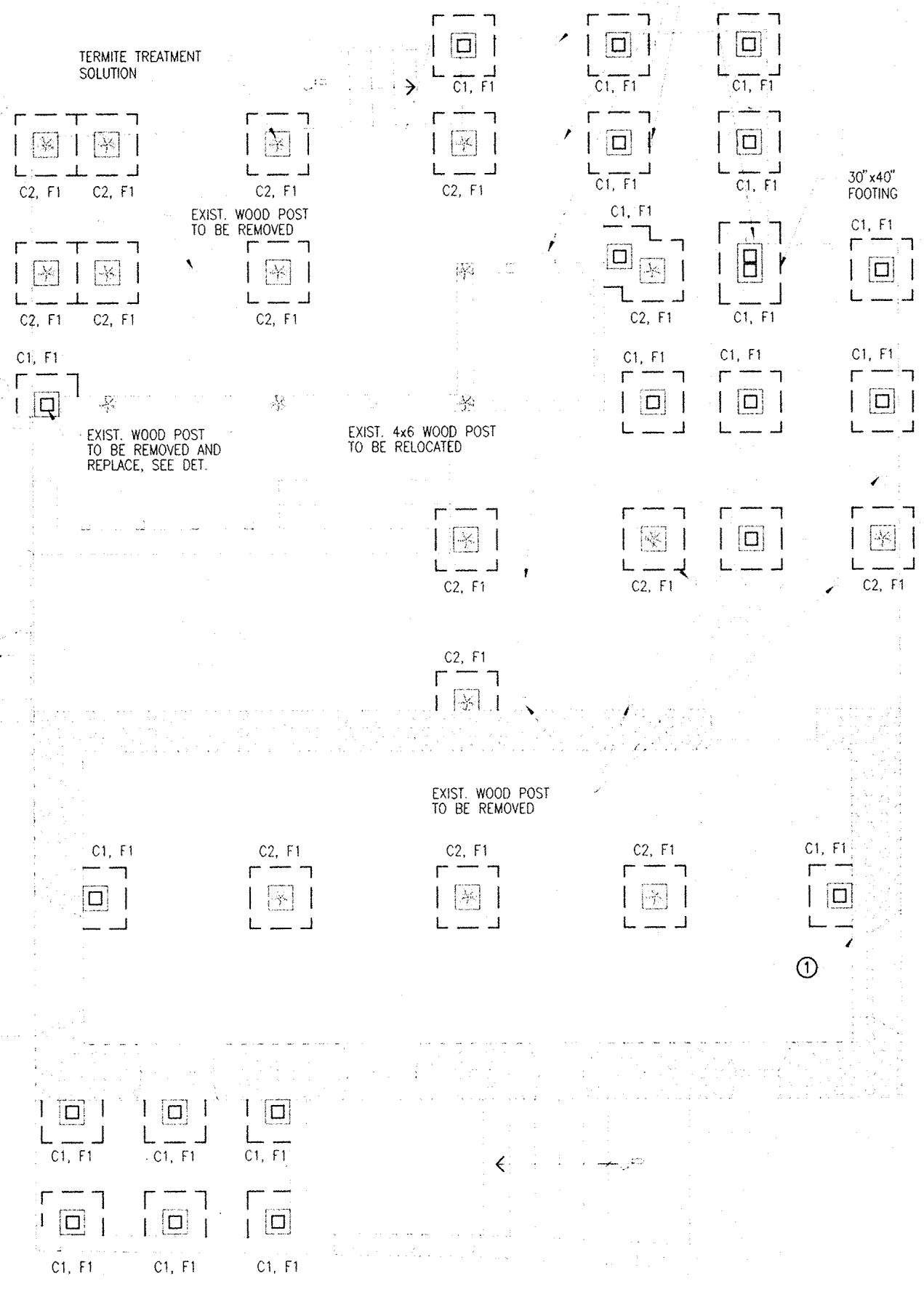
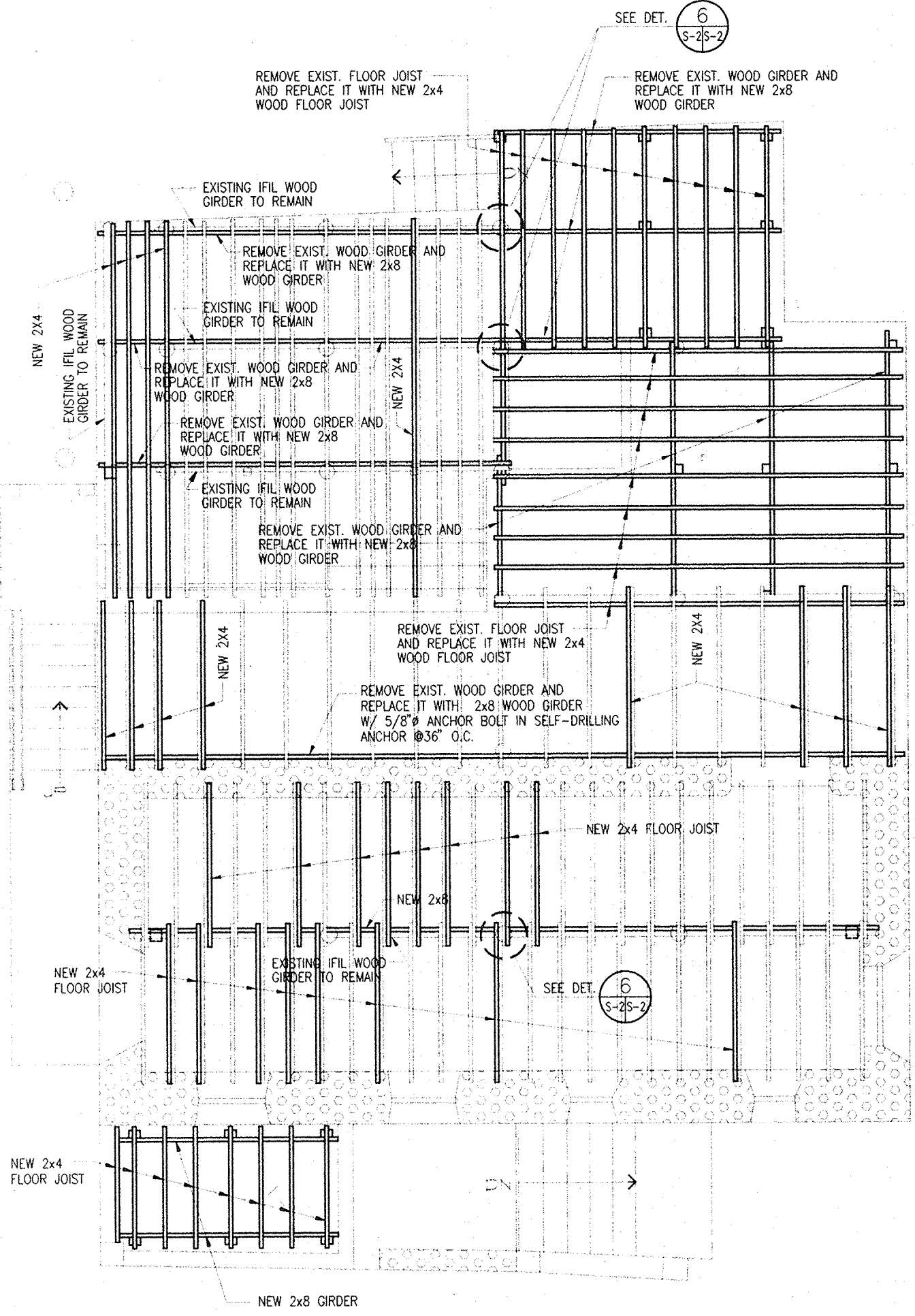


LEGEND:

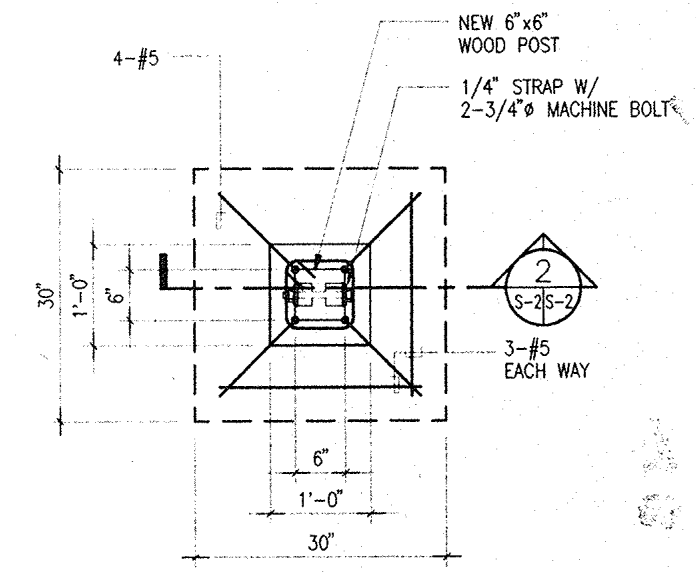
- LIGHT LINES DENOTE EXISTING
- HEAVY LINES DENOTE NEW
- EXIST. MANPOSTERIA
- EXIST. 8" CMU WALL/COLUMN
- EXIST. CONC. PIER
- EXIST. IFIL POST
- ① CRACKS/HAIRLINE CRACKS



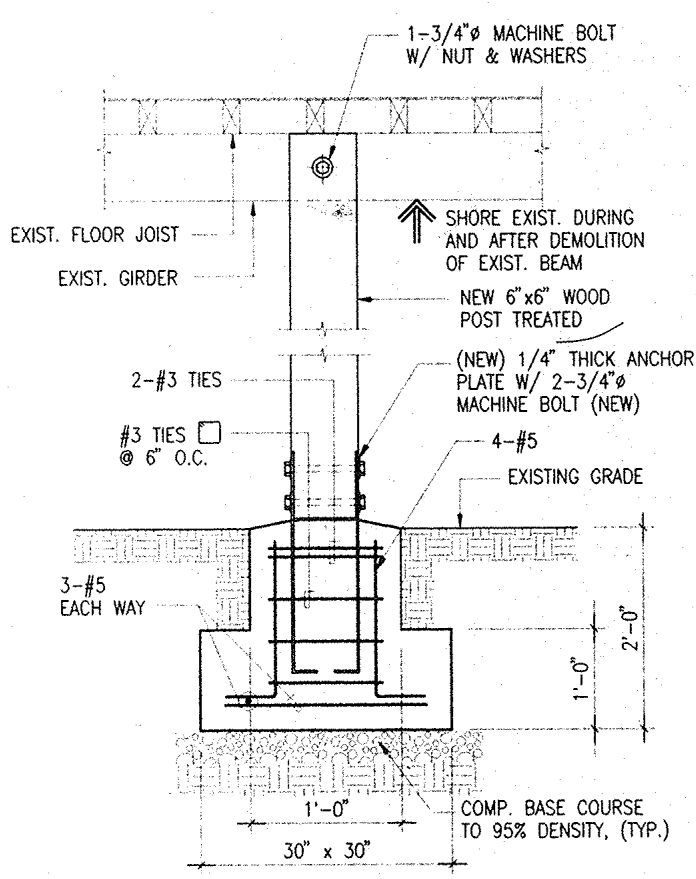
A FOOTING PLAN
SCALE: 1/4" = 1'-0"



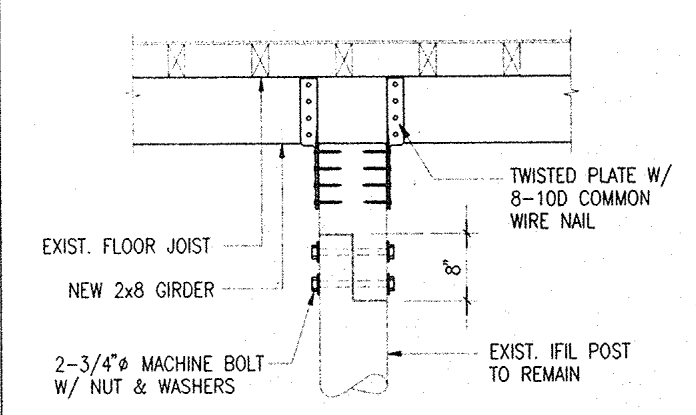
B FLOOR FRAMING PLAN
SCALE: 1/4" = 1'-0"



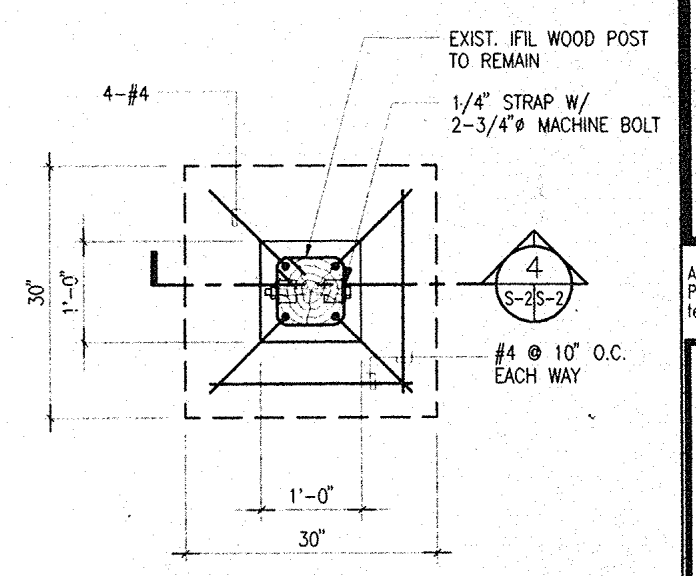
1 DETAIL
SCALE: 3/4" = 1'-0"



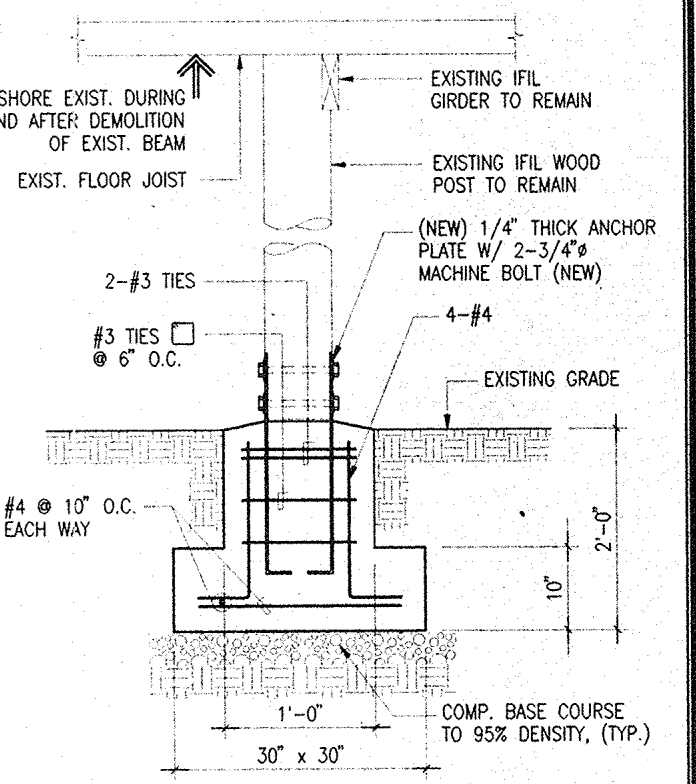
2 SECTION
SCALE: 3/4" = 1'-0"



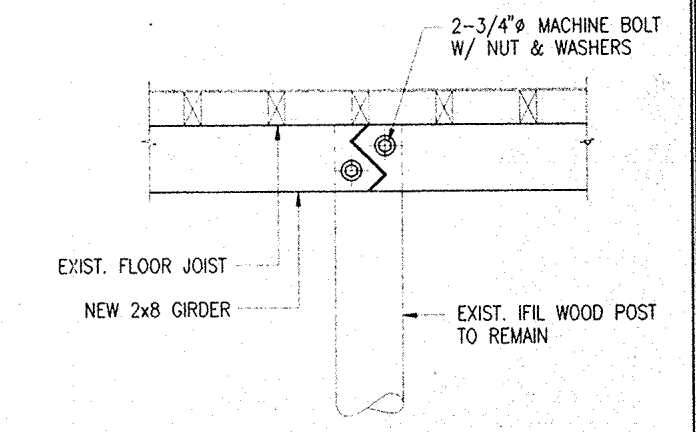
5 EXISTING IFIL POST SPLICE/CONN. DET.
SCALE: 3/4" = 1'-0"



3 DETAIL
SCALE: 3/4" = 1'-0"



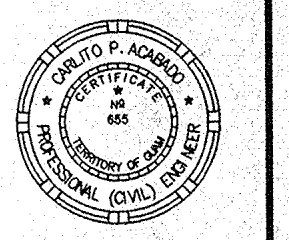
4 SECTION
SCALE: 3/4" = 1'-0"



6 NEW GIRDER SPLICE DET.
SCALE: 3/4" = 1'-0"

EVANGELISTA-ACABADO ENGINEERS, INC. dba **E & A ENGINEERS**

ABC BLDG. SUITE B6, TAMUNING, GUAM P.O. BOX 3163, AGANA, GUAM 96910 Tel. (671) 649-6258 Fax (671) 649-6259



I CERTIFY THAT THIS DRAWING WAS PREPARED BY ME OR UNDER MY DIRECT SUPERVISION

PROJECT	HOUSE REHABILITATION/STABILIZATION
OWNER	ANA LEON GUEIRERO INARAJAN, SALAJALLA ST., GUAM

REVISION	
----------	--

SHEET CONTENT	FOOTING PLAN FLOOR FRAMING PLAN
---------------	------------------------------------

DESIGNED BY: CPA
CHECKED BY: CPA
DRAWN BY: RBS
SUPERVISED BY: CPA
DATE: JULY '97

SHEET NUMBER:
S-2
2 OF 3

ANA LEON GUERRERO HOUSE HISTORIC PRESERVATION AS BUILT DRAWINGS

INARAJAN

GUAM

REVISION		
No.	Description	Date

THIS WORK WAS PREPARED BY ME OR UNDER MY DIRECT SUPERVISION

Name of Firm:
HNC
 ARCHITECTS, INC
 316
 HERNAN CORTES AVE.
 SUITE 300
 AGANA, GUAM
 96910
 (671) 477-2111
 (671) 477-2125 FAX

Design By: _____
 Drawn By: DDL
 Checked By: PL
 Date: 6-16-94

Reviewed By: Charles W. Canady
 Date: 8-11-94
 GPT Copersonship
 Date: 8-11-94

GUAM INANGORRON PRESERVATION TRUST
 GPT P.O. Box 3036 Agaña, Guam 96910
 Tel: 734-1102 Fax: 734-1103

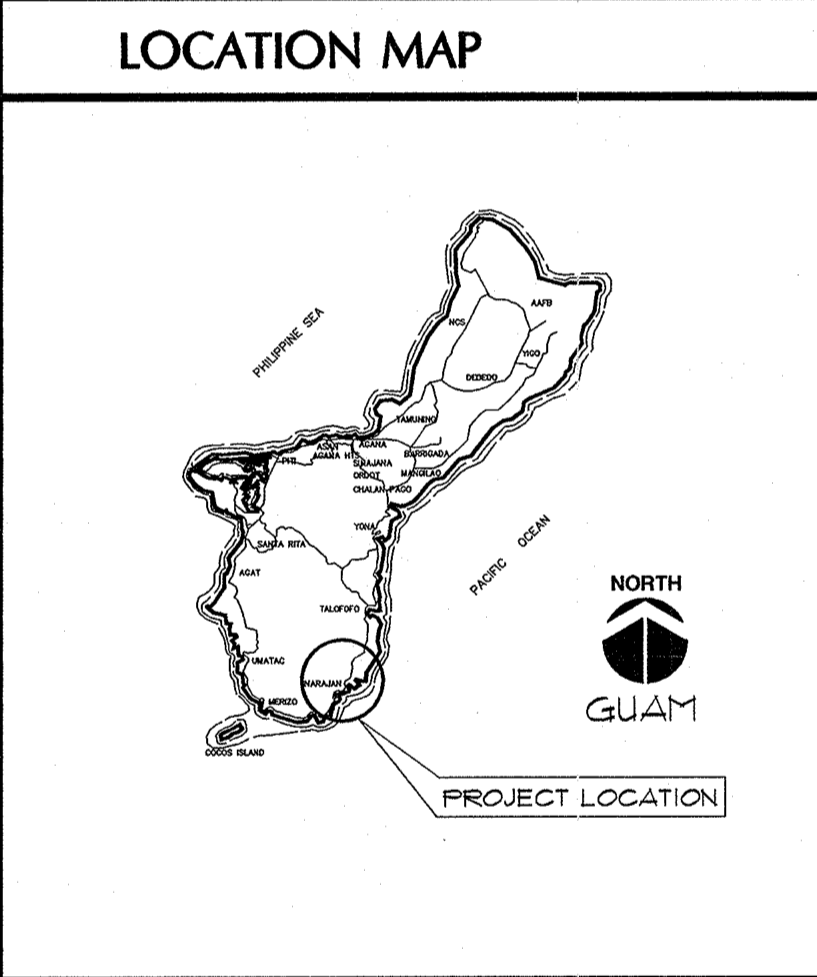
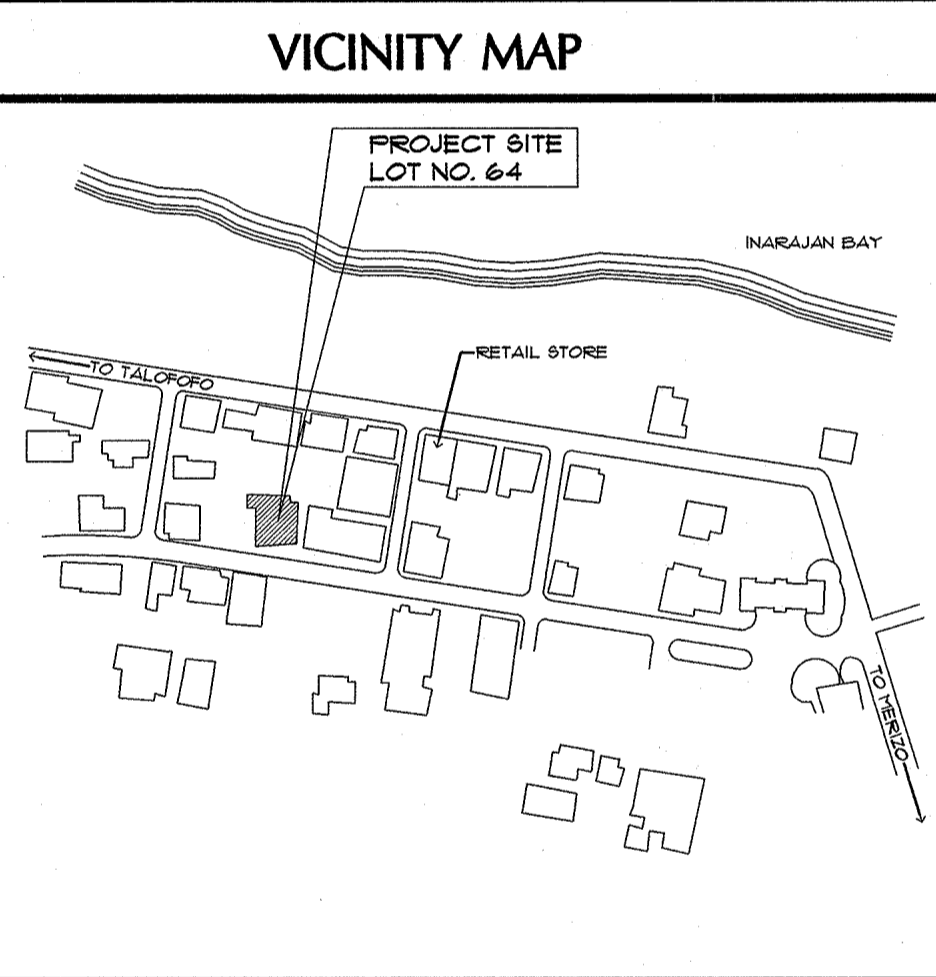
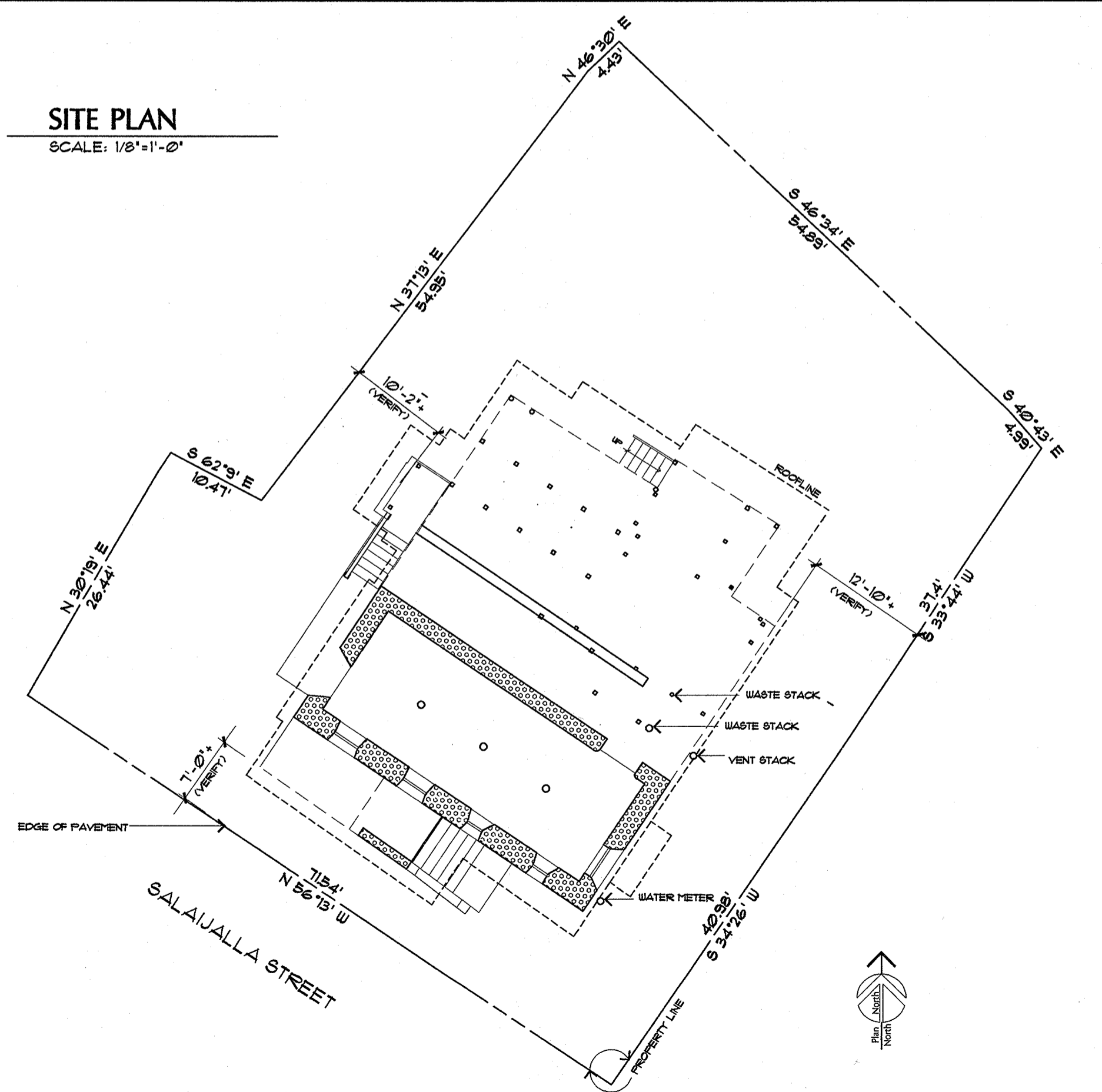
PROJECT TITLE:
**ANA LEON GUERRERO HOUSE
 HISTORIC PRESERVATION
 AS BUILT DRAWINGS**

Owner: ANA LEON GUERRERO

Date: _____

Title:
COVER SHEET

Drawing No.:
T-1
 Sheet 1 OF 10



LIST OF DRAWINGS

T-1	COVER SHEET
A-1	FLOOR PLANS
A-2	ROOF PLANS
A-3	REFLECTED CEILING PLANS FLOOR FRAMING PLAN
A-4	BUILDING ELEVATIONS AND BUILDING SECTIONS
A-5	INTERIOR ELEVATIONS
A-6	ENLARGED STAIR PLANS AND SECTIONS
A-7	SCHEDULES
A-8	DETAILS
E-1	MAIN FLOOR ELECTRICAL PLAN

REVISION		
No.	Description	Date

THIS WORK WAS PREPARED BY ME OR UNDER MY DIRECT SUPERVISION

Name of Firm:
HNC
 ARCHITECTS, INC
 316
 HERNAN CORTES AVE.
 SUITE 300
 AGANA, GUAM
 96910
 (671) 477-2111
 (671) 477-2125 FAX

Design By: _____
 Drawn By: DDL
 Checked By: FL
 Date: 6-16-94

Reviewed By: Charles W. Conroy
 Date: 8-11-94
FL
 GPT Corporation
 8-11-94
 Date: _____

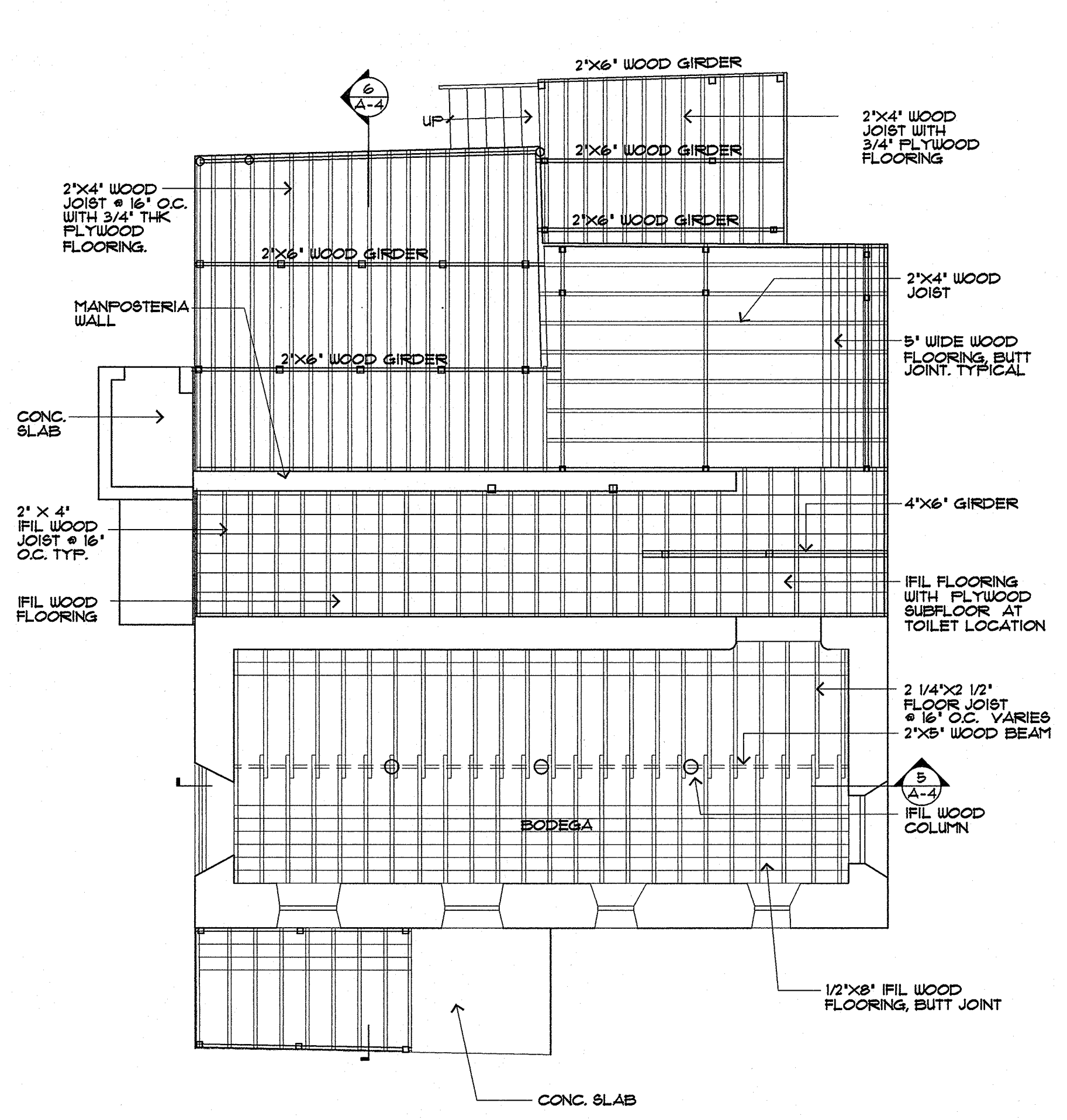
GUAM
 INANGORRON
 PRESERVATION
 TRUST
 P.O. Box 3036
 Agaña, Guam 96910
 Tel: 784-1102 Fax: 784-1103

PROJECT TITLE:
**ANA LEON GUERRERO
 HISTORIC PRESERVATION
 AS BUILT DRAWINGS**

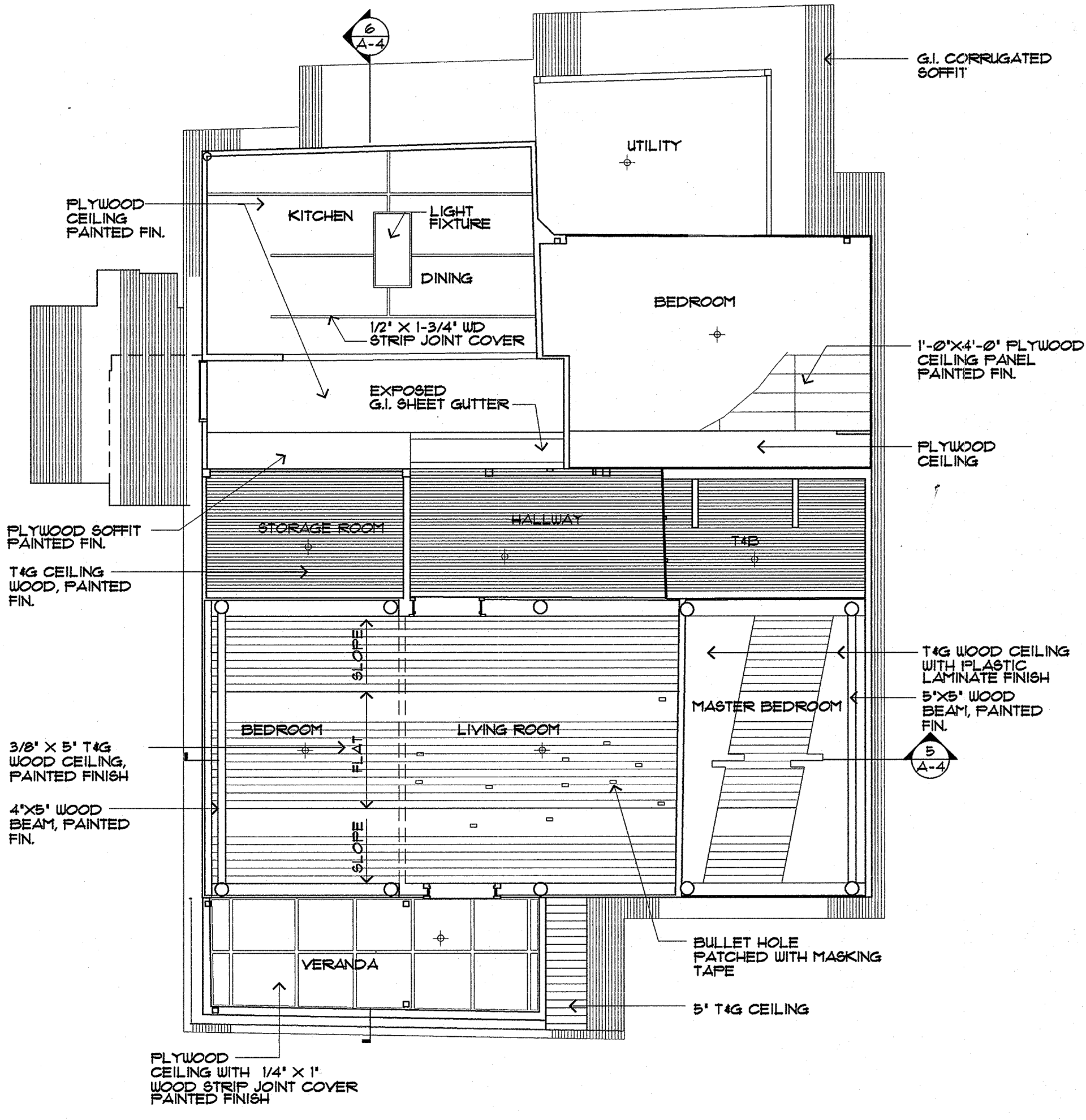
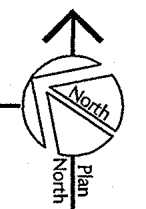
Owner: ANA LEON GUERRERO
 Date: _____

Title:
**REFLECTED CEILING PLANS /
 FLOOR FRAMING PLAN**

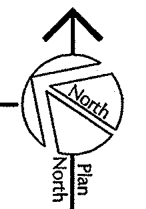
Drawing No.:
A-3
 Sheet 4 OF 10



1 FLOOR FRAMING PLAN
 SCALE: 1/4"=1'-0"



2 MAIN FLOOR REFLECTED CEILING PLAN
 SCALE: 1/4"=1'-0"

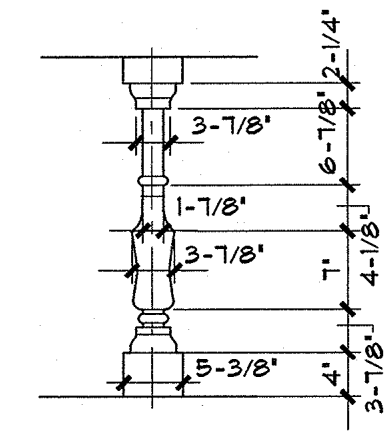


REVISION		
No.	Description	Date

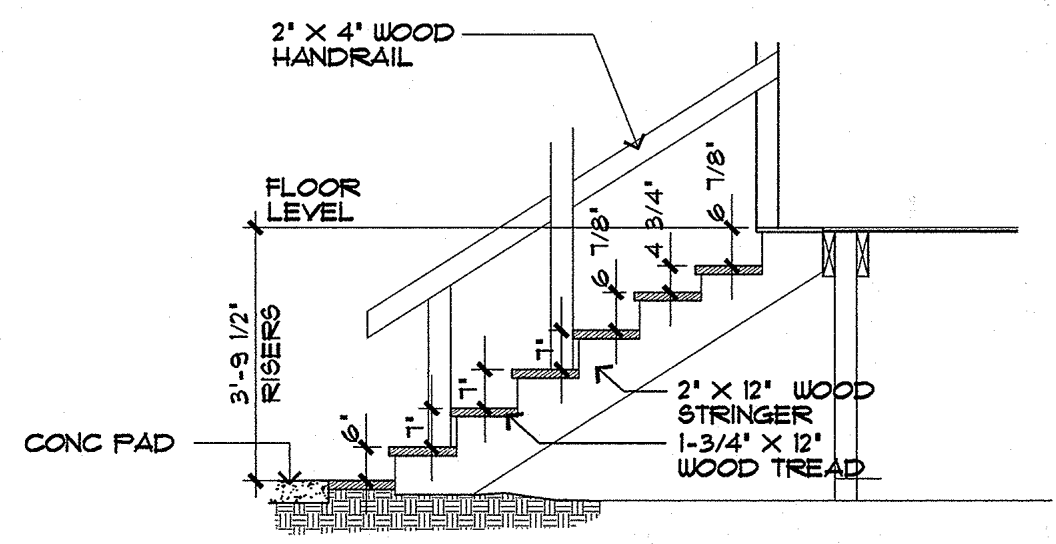
THIS WORK WAS PREPARED BY ME OR UNDER MY DIRECT SUPERVISION

Name of Firm:
HNC
 ARCHITECTS, INC
 316
 HERNAN CORTES AVE.
 SUITE 300
 AGANA, GUAM
 96910
 (671) 477-2111
 (671) 477-2125 FAX

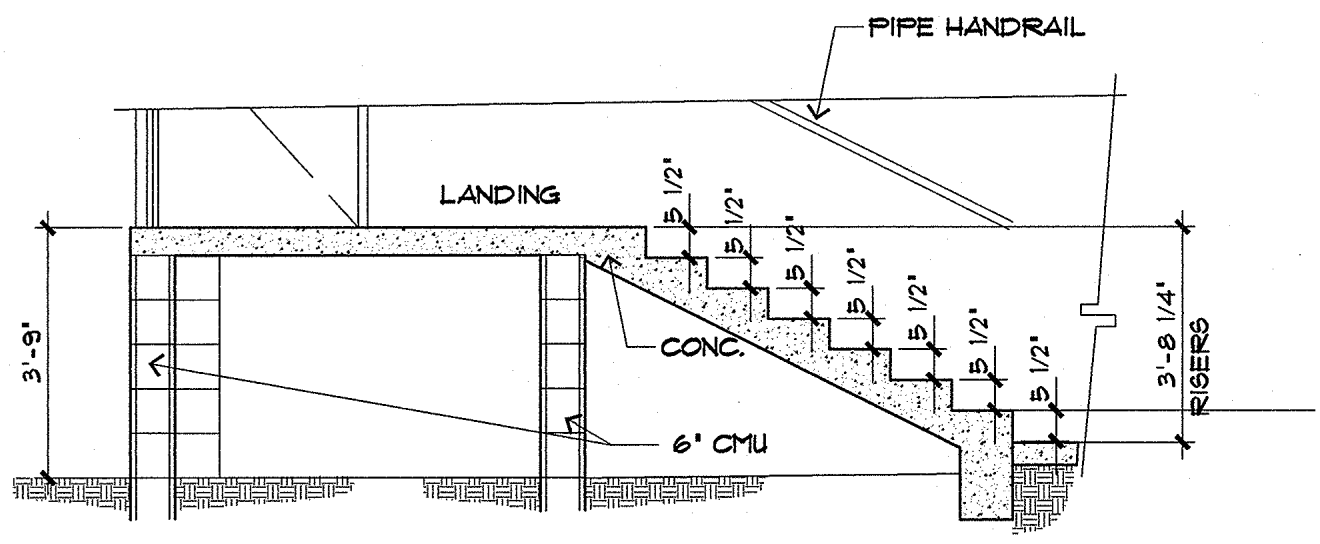
Design By: _____
 Drawn By: DDL
 Checked By: FL
 Date: 6-16-94



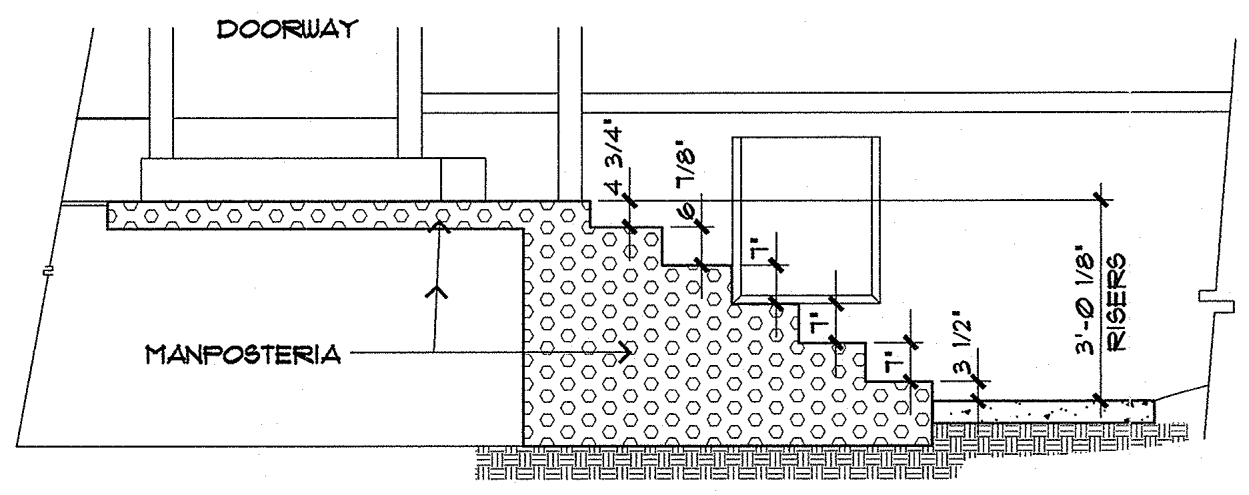
7 CONCRETE BALUSTER
 SCALE: 1/2" = 1'-0"



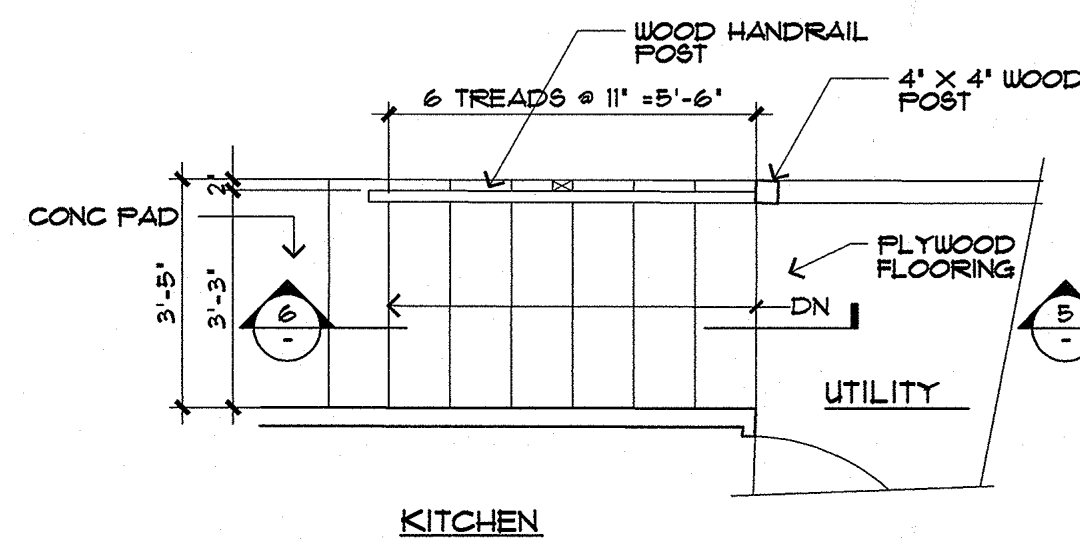
6 SECTION
 SCALE: 1/2" = 1'-0"



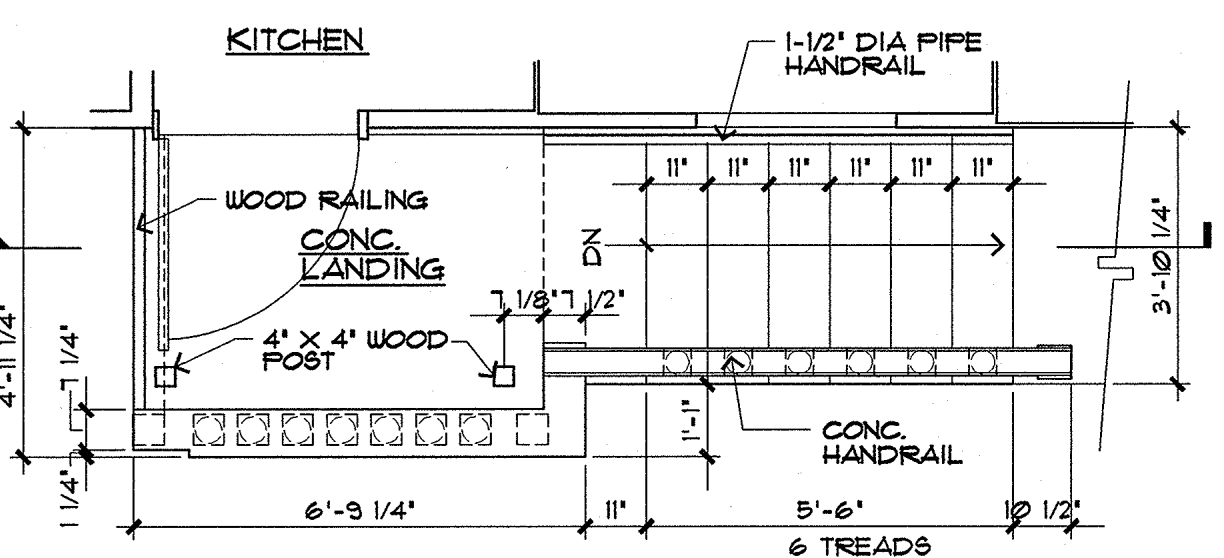
5 SECTION
 SCALE: 1/2" = 1'-0"



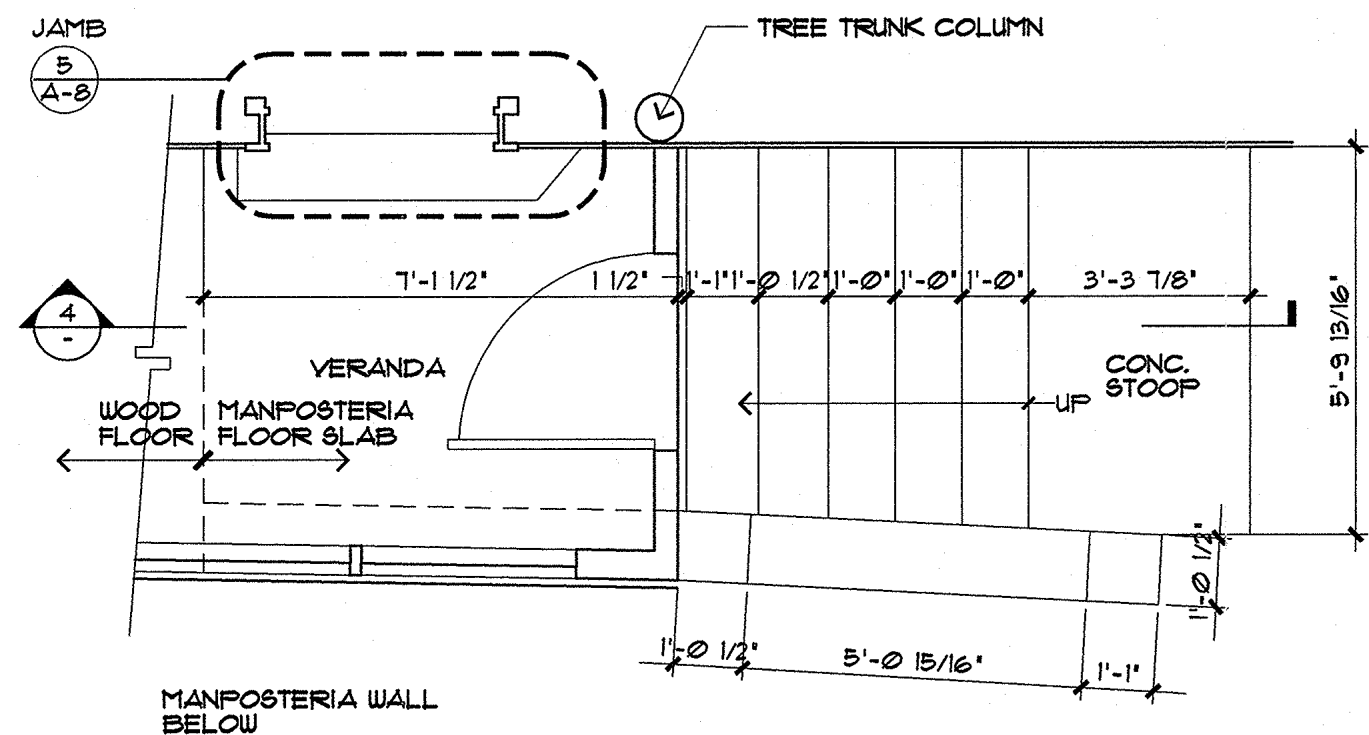
4 SECTION
 SCALE: 1/2" = 1'-0"



3 ENLARGED PLAN : STAIR 3
 SCALE: 1/2" = 1'-0"



2 ENLARGED PLAN : STAIR 2
 SCALE: 1/2" = 1'-0"



1 ENLARGED PLAN : STAIR 1
 SCALE: 1/2" = 1'-0"

Reviewed By: Charles W. Canady
 Date: 8-11-94
 GFT Chairperson: 8-11-94

GUAM INANGKON PRESERVATION INADAH! GUAHAN TRUST
 GFT P.O. Box 3036 Agaña, Guam 96910
 Tel: 734-1102 Fax: 734-1108

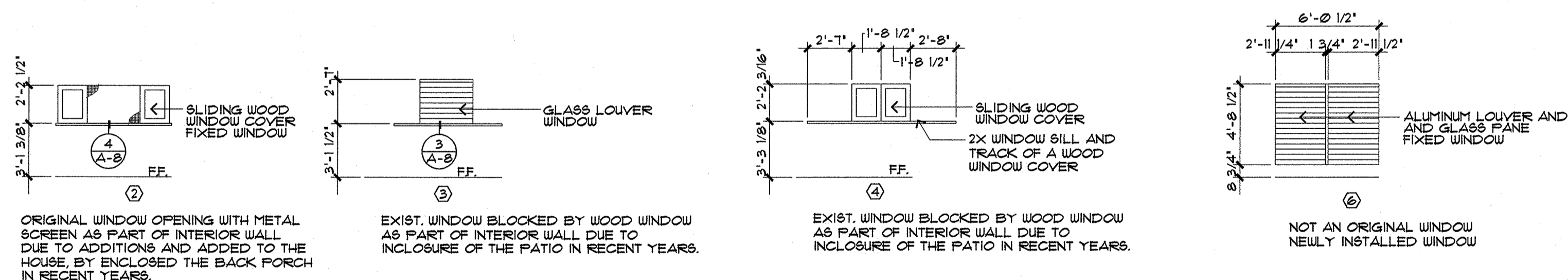
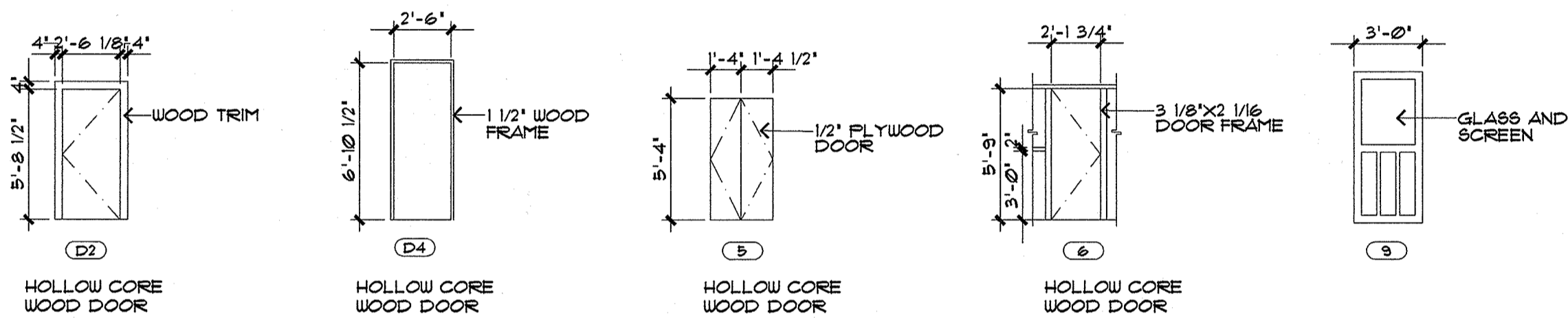
PROJECT TITLE:
ANA LEON GUERRERO HOUSE HISTORIC PRESERVATION AS BUILT DRAWINGS

Owner: ANA LEON GUERRERO

Title:
ENLARGED STAIR PLANS AND SECTIONS

WINDOW SCHEDULE				
WINDOW NUMBER	SIZE (W X H)	SILL AFF. HEIGHT	MATERIAL	REMARKS
①	3'-1 1/2" X 2'-2"	3'-1 1/2"	ALUM.	ALUM LOUVER
②	2'-2 1/2" X 3'-1"	3'-1 3/8"	WOOD	INTERIOR (NOW) WITH TWO SIDES SLIDING WOOD LOUVER PANEL
③	3'-1 1/8" X 2'-7"	3'-1/2" REF. TO ELEVATION	ALUM.	GLASS LOUVER
④	3'-4 3/4" X 2'-3"	3'-1/2" REF. TO ELEVATION	WOOD	BLOCK FOR INTERIOR SPACE
⑤	3'-1 1/2" X 2'-2"	3'-1"	N/A	BOARDED FOR WINDOW A/C UNIT
⑥	6'-1/2" X 4'-8 1/2" WITH 1 3/4" CENTER MULLION	8 3/4"	ALUM.	ALUMINUM LOUVER AND GLASS PANE
⑦	2'-8 1/2" X 2'-1 1/2"	3'-6"	ALUM.	
⑧	3'-0" X 2'-11"	3'-8"	ALUM.	GLASS LOUVER
⑨	3'-1 1/2" X 3'-6 1/2" WITH 1 3/4" CENTER MULLION	3'-6"	ALUM.	GLASS LOUVER
⑩	2'-9 1/2" X 4'-2" WITH 3 3/4" CENTER MULLION	2'-10"	ALUM.	ALUM. LOUVER
⑪	2'-0" X 3'-6 3/4"	2'-11 3/4"	N/A	BLOCKED AS INT. WALL
⑫	3'-0 3/4" X 3'-6 3/4"	2'-11 3/4"	N/A	BLOCKED AS INT. WALL
⑬	3'-5" X 3'-3"	3'-5 1/2"	WOOD	WOOD
⑭	6'-0" X 2'-6"	3'-0 1/2"	ALUM.	ALUM
⑮	6'-4 1/2" X 2'-6"	3'-0 1/2"	ALUM.	ALUM
⑯	5'-8 1/2" X 2'-6"	3'-0 1/2"	ALUM.	ALUM

DOOR SCHEDULE				
DOOR NUMBER	SIZE (W X H)	MATERIALS	SWING	REMARK
(D1)	3'-6" X 5'-5"	DOORWAY		WOOD WITH 4" TRIM
(D2)	2'-6 1/8" X 5'-8 1/8" X 1/4"	HOLLOW CORE WOOD	LH	
(D3)	3'-6 1/2" X 5'-5 3/4"	DOORWAY		WOOD
(D4)	2'-6" X 6'-10 1/2" X 1/4"	HOLLOW CORE WOOD	RH	WOOD
(D5)	(2) 1'-4" X 5'-4" X 1/2"	PLYWOOD PANEL	DBL	WOOD
(D6)	2'-1 3/4" X 5'-9" X 1/4"	HOLLOW CORE WOOD	LH	WOOD
(D7)	3'-0" X 6'-3" X 1/4"	HOLLOW CORE WOOD	RH	WOOD
(D8)	3'-1 1/2" X 6'-4 1/2" X 1/4"	HOLLOW CORE WOOD	RH	WOOD
(D9)	2'-7" X 6'-11 1/2" X 1/2"	WOOD PANEL & GLASS	RH	WOOD
(D10)	2'-2" X 5'-8" X 1/4"	HOLLOW CORE WOOD	RH	WOOD
(D11)	4'-11" X 5'-11 1/2" X 1/2"	HOLLOW CORE WOOD	LH	WOOD



ORIGINAL WINDOW OPENING WITH METAL SCREEN AS PART OF INTERIOR WALL DUE TO ADDITIONS AND ADDED TO THE HOUSE, BY ENCLOSED THE BACK PORCH IN RECENT YEARS.

EXIST. WINDOW BLOCKED BY WOOD WINDOW AS PART OF INTERIOR WALL DUE TO INCLOSURE OF THE PATIO IN RECENT YEARS.

EXIST. WINDOW BLOCKED BY WOOD WINDOW AS PART OF INTERIOR WALL DUE TO INCLOSURE OF THE PATIO IN RECENT YEARS.

NOT AN ORIGINAL WINDOW NEWLY INSTALLED WINDOW

REVISION		
No.	Description	Date

THIS WORK WAS PREPARED BY ME OR UNDER MY DIRECT SUPERVISION

Name of Firm: **HNC ARCHITECTS, INC**
 316 HERNAN CORTES AVE.
 SUITE 300
 AGANA, GUAM
 96910
 (671) 477-2111
 (671) 477-2125 FAX

Design By: DDL
 Drawn By: PL
 Checked By: PL
 Date: 6-16-94

Reviewed By: Charles W. Cassidy
 Date: 8-11-94
 GPT Chiefperson: 8-11-94
 Date: _____

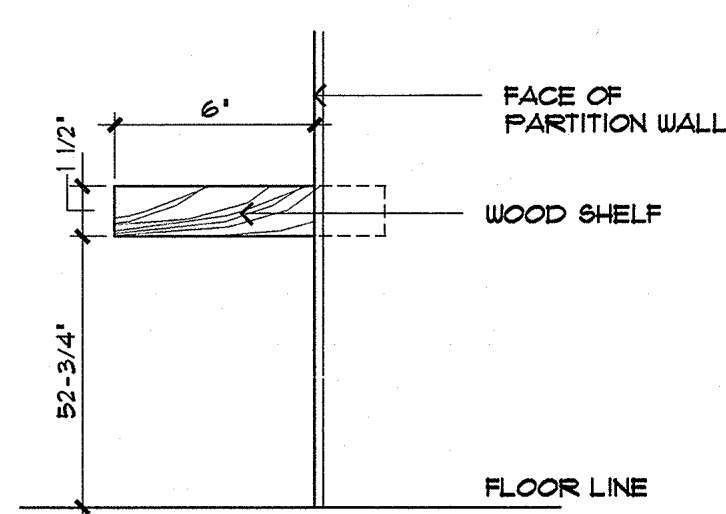
GUAM HISTORIC PRESERVATION INADAH! GUAHAN TRUST
 GPT P.O. Box 3036
 Agaña, Guam 96910
 Tel: 734-1102 Fax: 734-1163

PROJECT TITLE:
ANA LEON GUERRERO HOUSE HISTORIC PRESERVATION AS BUILT DRAWINGS

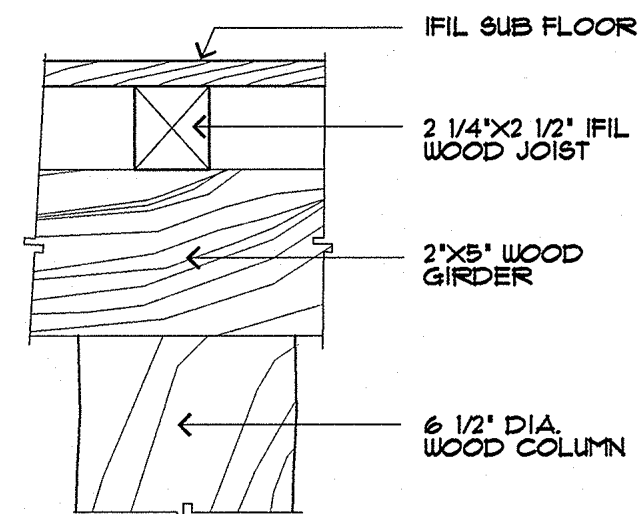
Owner: ANA LEON GUERRERO
 Date: _____

Title:
SCHEDULES

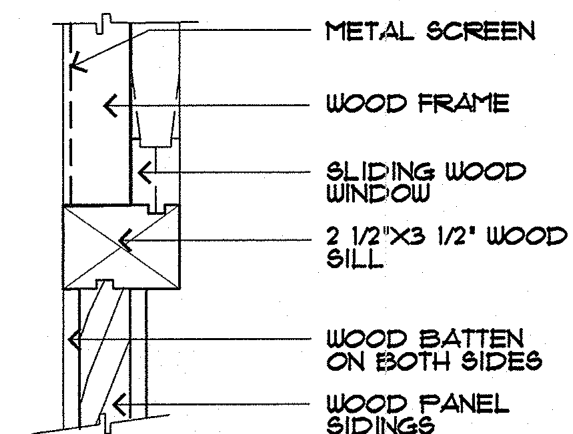
Drawing No.:
A-7
 Sheet 8 OF 10



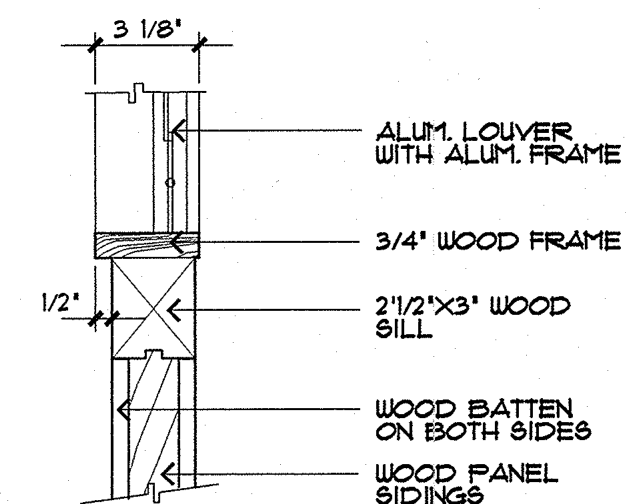
SECTION
8 WOOD SHELF
SCALE: 3"=1'-0"



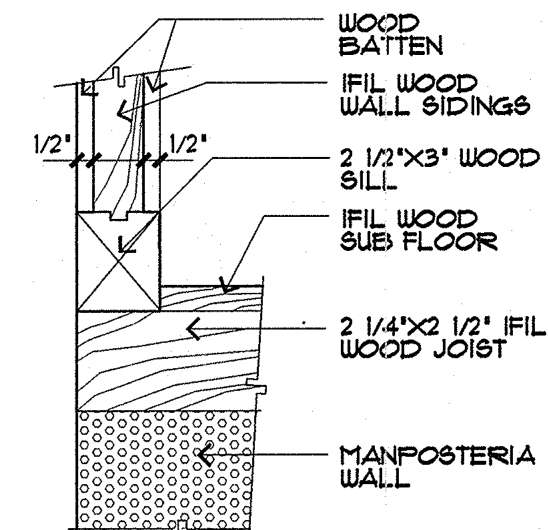
SECTION
7 FLOOR DETAIL
SCALE: 3"=1'-0"



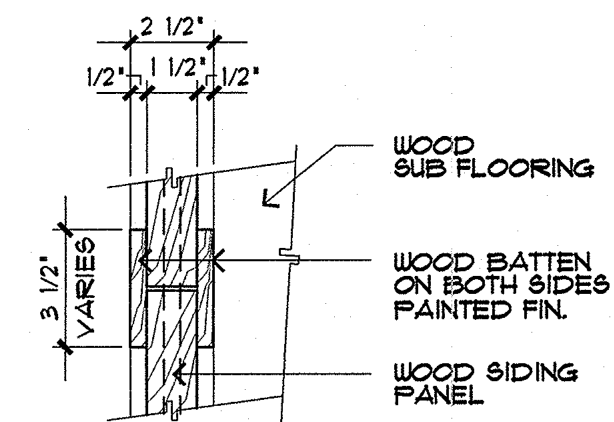
SECTION
4 WINDOW SILL DETAIL
SCALE: 3"=1'-0"



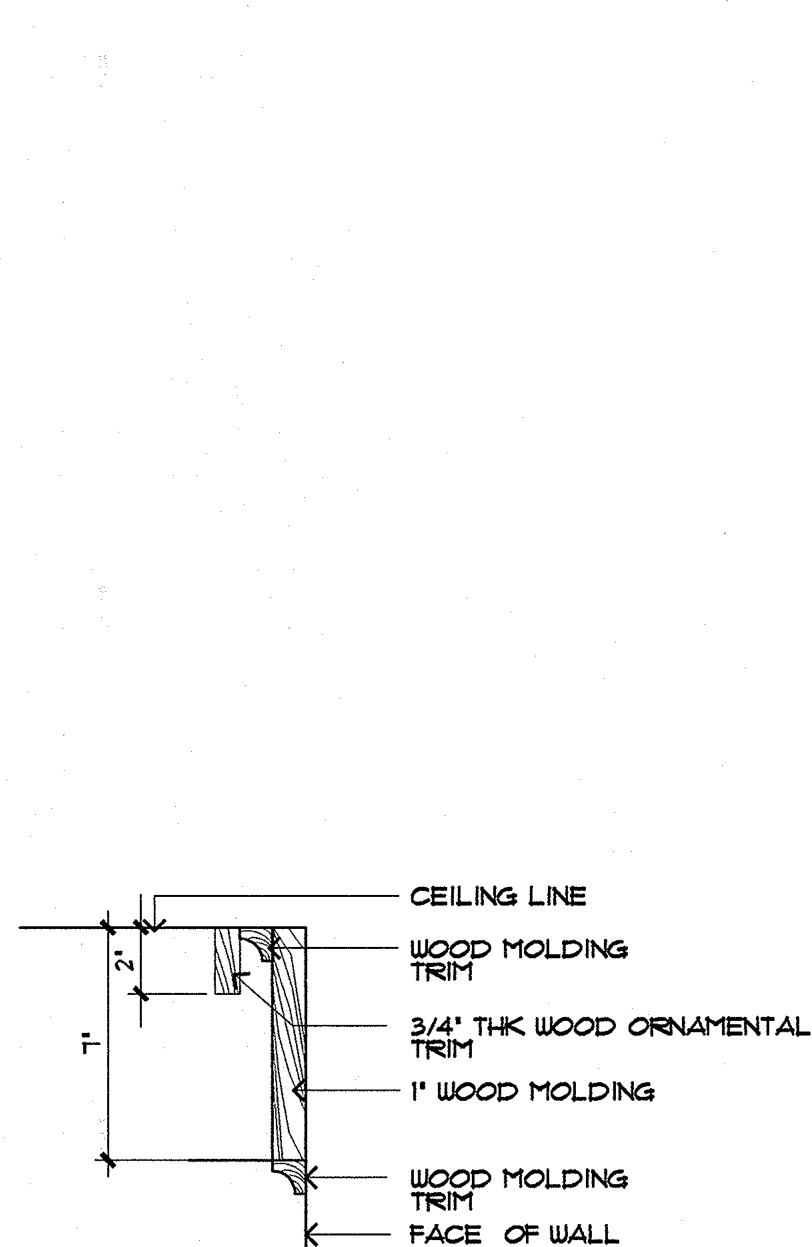
SECTION
3 WINDOW SILL DETAIL
SCALE: 3"=1'-0"



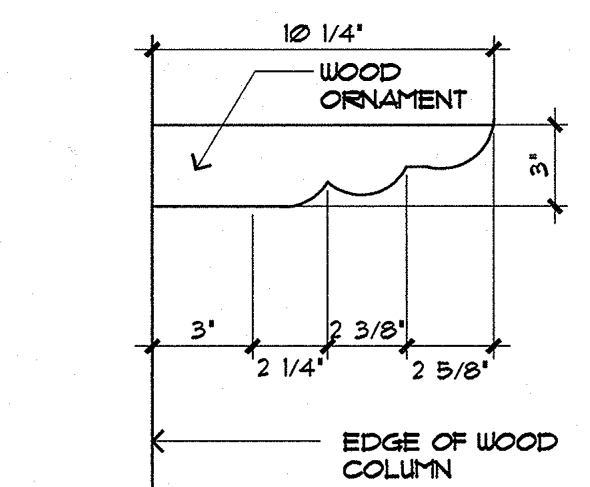
SECTION
2 WALL BASE DETAIL
SCALE: 3"=1'-0"



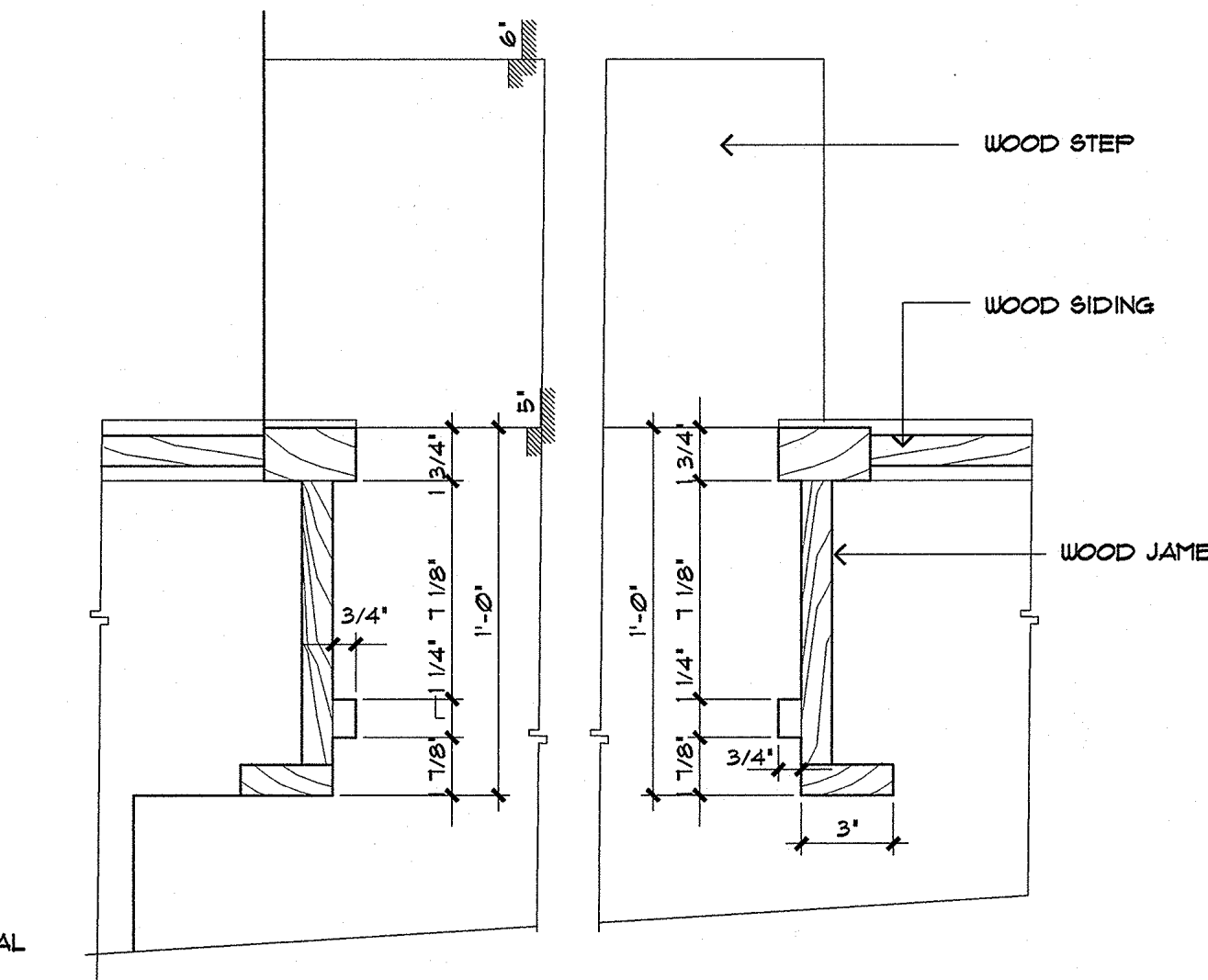
PLAN
1 WALL DETAIL
SCALE: 3"=1'-0"



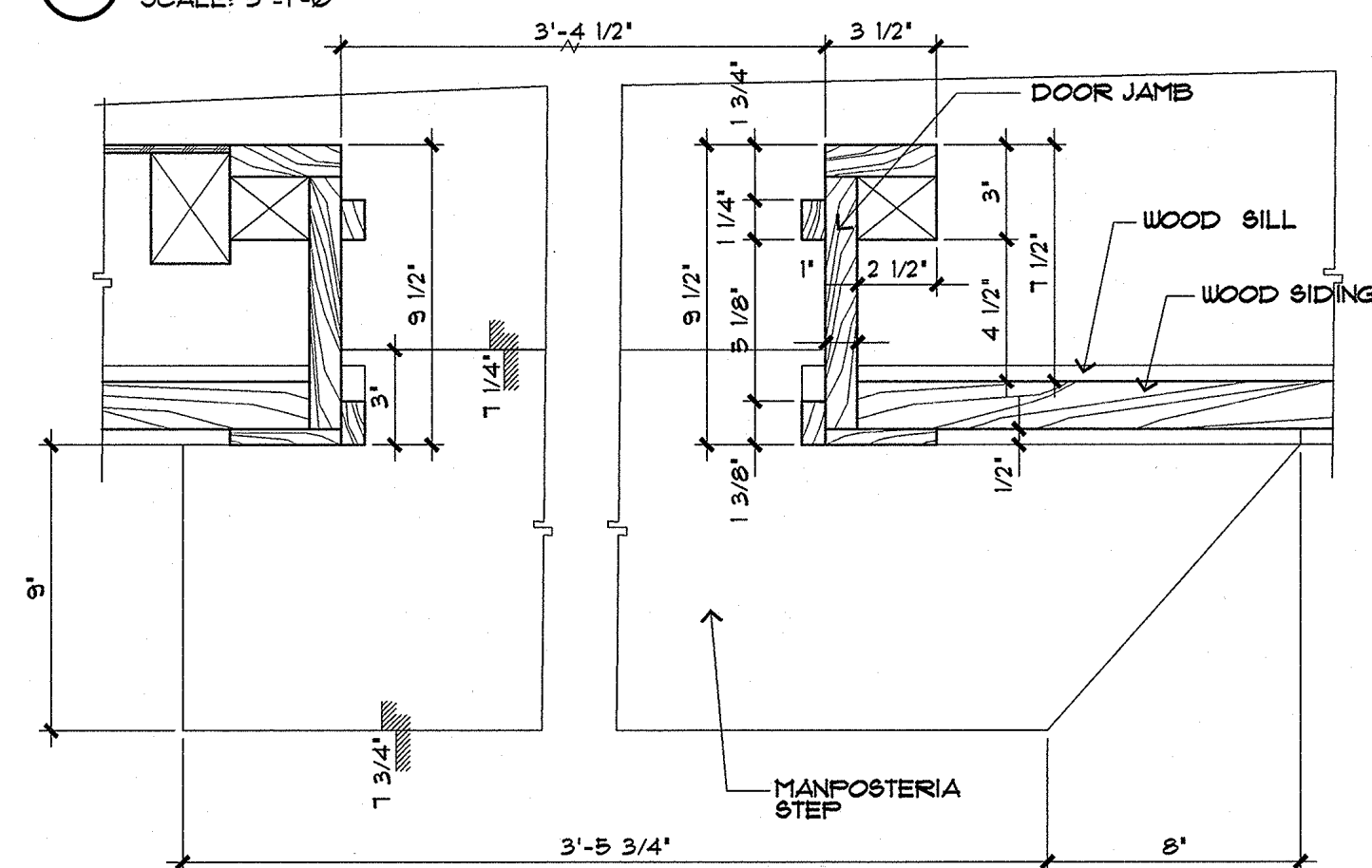
SECTION
10 CEILING MOULDING
SCALE: 3"=1'-0"



ELEVATION
9 COLUMN ORNAMENT
SCALE: 3"=1'-0"



SECTION
6 JAMB
SCALE: 3"=1'-0"



PLAN
5 JAMB
SCALE: 3"=1'-0"

REVISION		
No.	Description	Date

THIS WORK WAS PREPARED BY ME OR UNDER MY DIRECT SUPERVISION
Date: _____
Name of Firm: **HNC ARCHITECTS, INC.**
316 HERNAN CORTES AVE.
SUITE 300
AGANA, GUAM
96910
(671) 477-2111
(671) 477-2125 FAX
Design By: _____
Drawn By: DDL
Checked By: FL
Date: 6-16-94

Reviewed By: Charles W. Conroy
Date: 8-11-94
V. Busi
CPT Chairperson: 8-11-94
Date: _____
PROJECT TITLE:
GUAM INDEPENDENCE PRESERVATION INADAH GUATHAN TRUST
P.O. Box 3036
Agana, Guam 96910
Tel: 734-1102 Fax: 734-1103

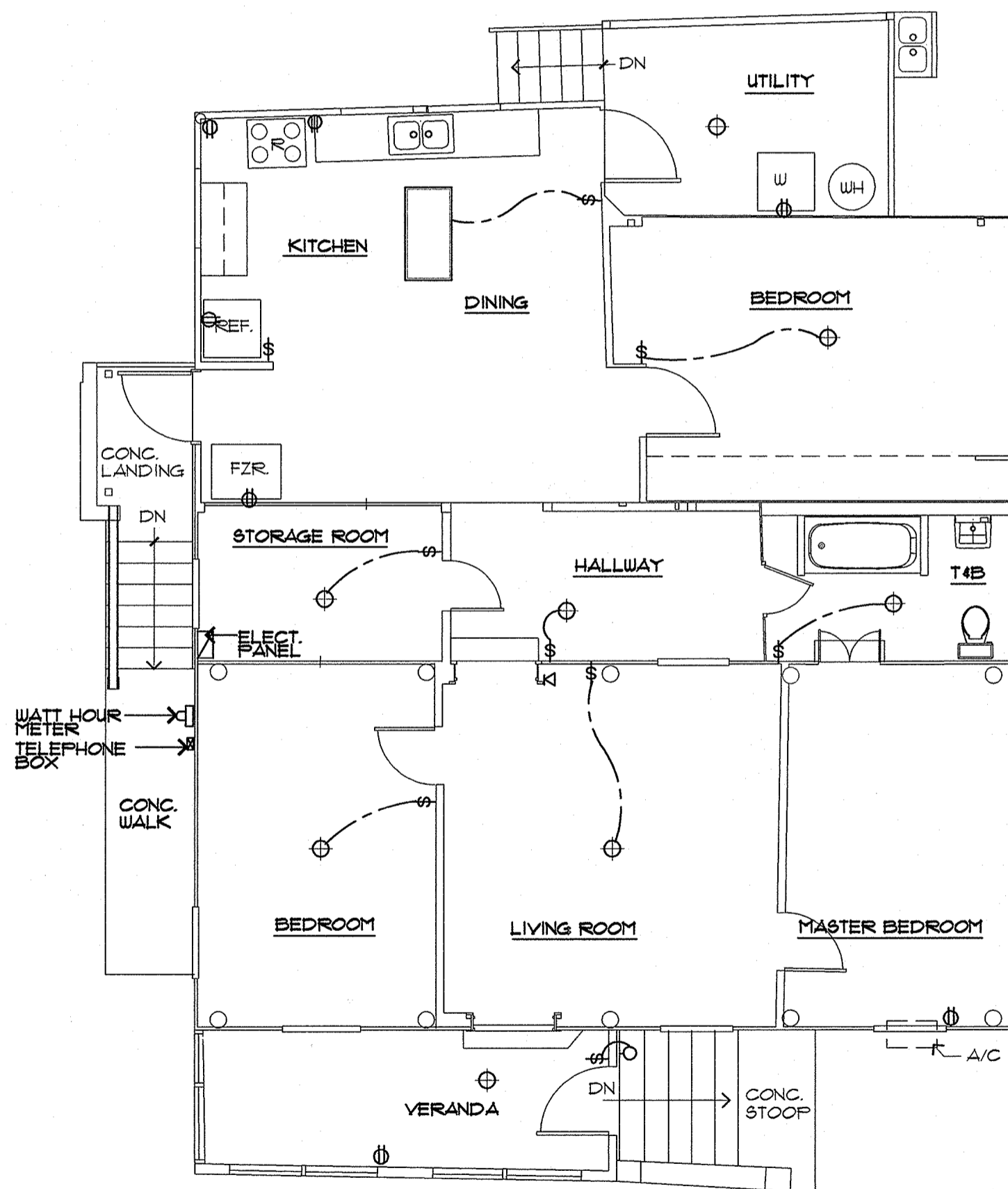
PROJECT TITLE:
ANA LEON GUERRERO HOUSE HISTORIC PRESERVATION AS BUILT DRAWINGS
Owner: ANA LEON GUERRERO
Date: _____

Title:
DETAILS

Drawing No.:
A-8
Sheet 9 OF 10

FIXTURE LEGEND

- ⊕ RECEPTACLE DUPLEX WALL MOUNTED
- ⊕ RECEPTACLE RANGE OUTLET WALL MOUNTED
- ⊙ LIGHT FIXTURE WALL MOUNTED
- ⊕ LIGHT FIXTURE, SURFACE, CEILING MOUNTED
- \$ LIGHT SWITCH WALL MOUNTED
- ∇ TELEPHONE OUTLET
- ⊞ ELECTRICAL MAIN PANEL
- ▭ 2'-0"X4'-0" FLUORESCENT LIGHT FIXTURE



1 MAIN FLOOR PLAN- ELECTRICAL PLAN
SCALE: 1/4" = 1'-0"



REVISION		
No.	Description	Date

THIS WORK WAS PREPARED BY ME OR UNDER MY DIRECT SUPERVISION
Date: _____

Name of Firm:
HNC
 ARCHITECTS, INC
 316 HERNAN CORTES AVE.
 SUITE 300
 AGANA, GUAM
 96910
 (671) 477-2111
 (671) 477-2125 FAX

Design By: _____
 Drawn By: DDL
 Checked By: PL
 Date: 6-16-94

Reviewed By: Charles W. Casady
 Date: 8-11-94
 GPT Chairperson: 8-11-94
 Date: _____

GUAM
 INANGORON
 PRESERVATION
 INADAH! GUAHAN
 TRUST
 Tel: 784-1102 Fax: 784-1103

PROJECT TITLE:
**ANA LEON GUERRERO HOUSE
 HISTORIC PRESERVATION
 AS BUILT DRAWINGS**

Owner: ANA LEON GUERRERO
 Date: _____

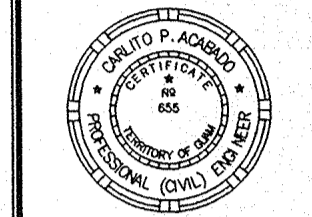
Title:
**MAIN FLOOR -
 ELECTRICAL PLAN**

Drawing No.:
E-1
 Sheet 10 OF 10

RECEIVED
 JUL 23 1997
 Guam Preservation Trust
 By: [Signature]

EVANGELISTA-ACABADO
 ENGINEERS, INC.
 dba
E & A
 ENGINEERS

ABC BLDG. SUITE B6, TAMUNING, GUAM
 P.O. BOX 3163, AGANA, GUAM 96910
 Tel. (671) 649-6258 Fax (671) 649-6259



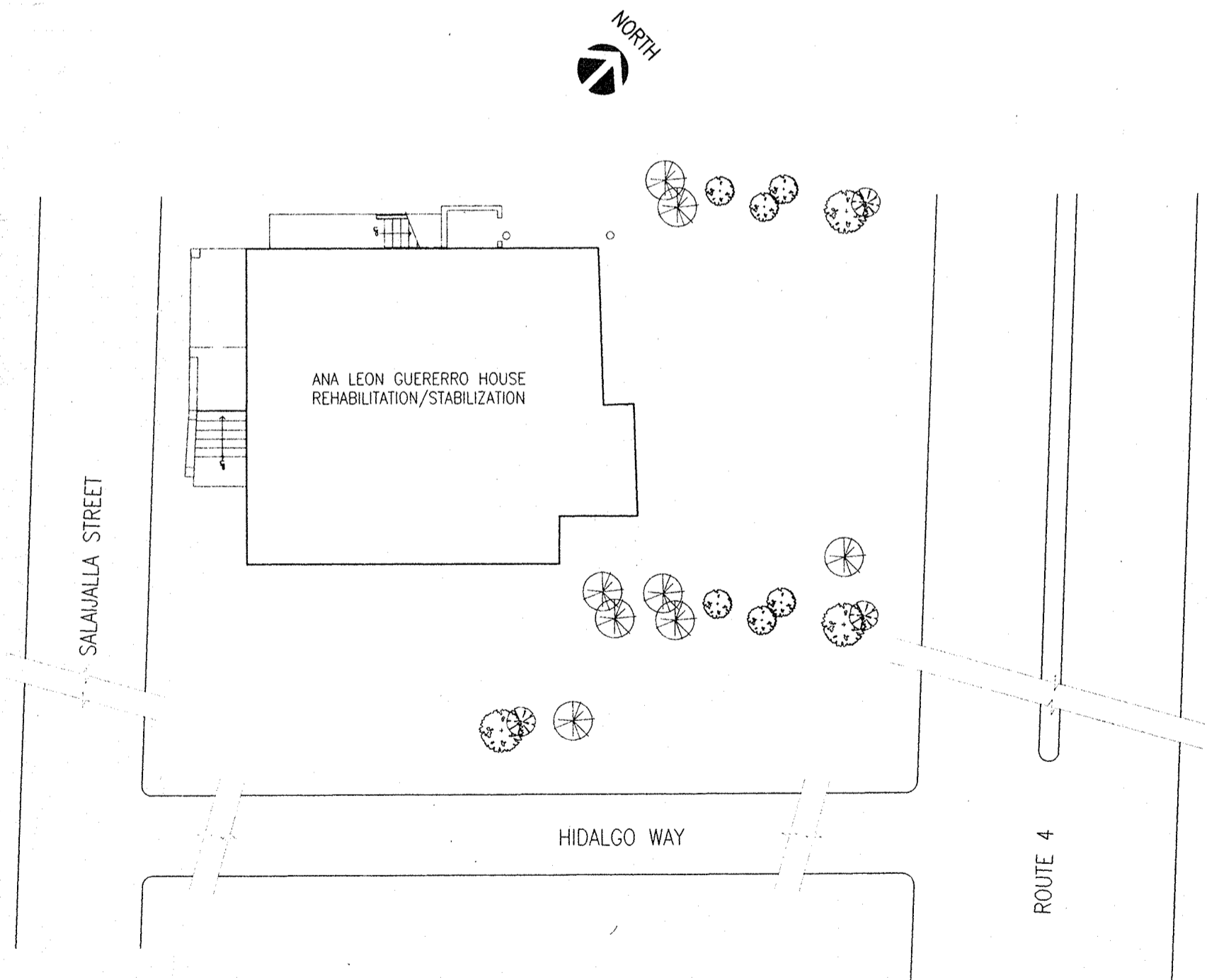
I CERTIFY THAT THIS
 DRAWING WAS PREPARED
 BY ME OR UNDER MY
 DIRECT SUPERVISION

MURPHY
 ENTERPRISES INC.
 P.O. BOX 5122
 AGANA, GUAM 96910
 TEL. (671) 472-4426
 FAX (671) 472-4806

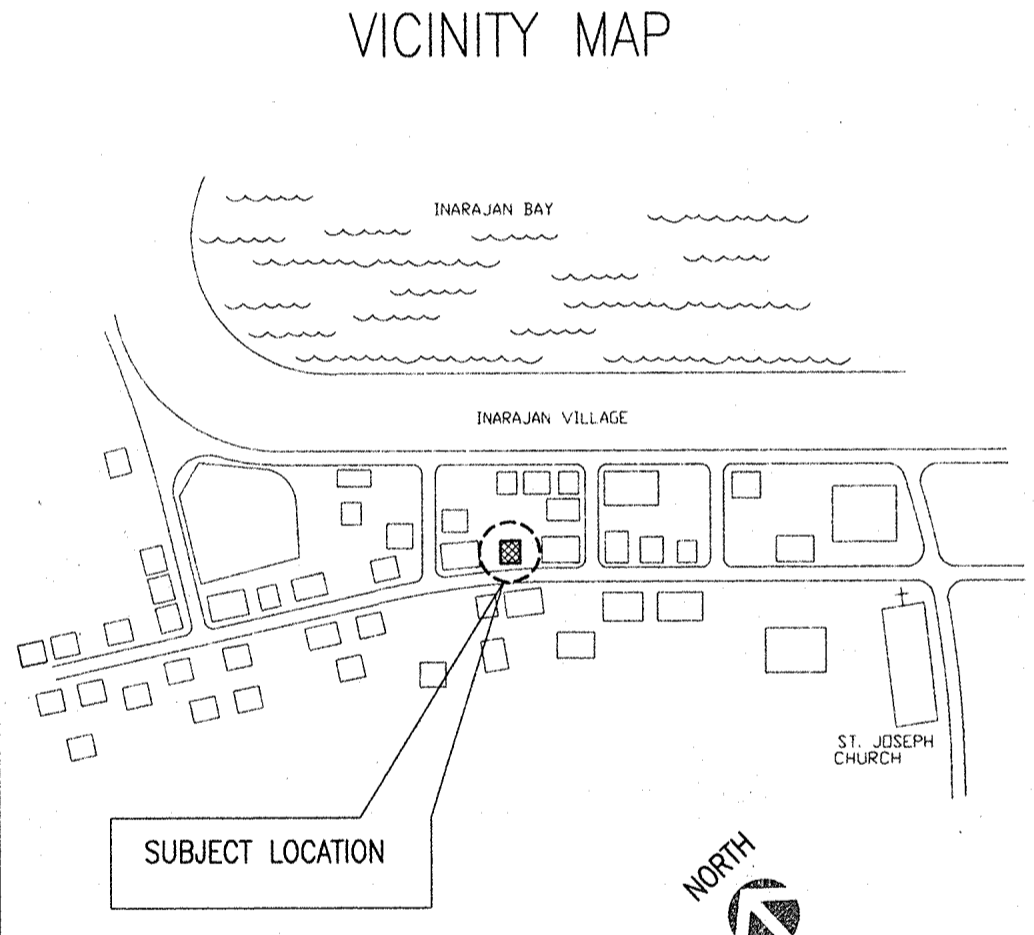
ANA LEON GUERERRO HOUSE REHABILITATION/STABILIZATION

INARAJAN

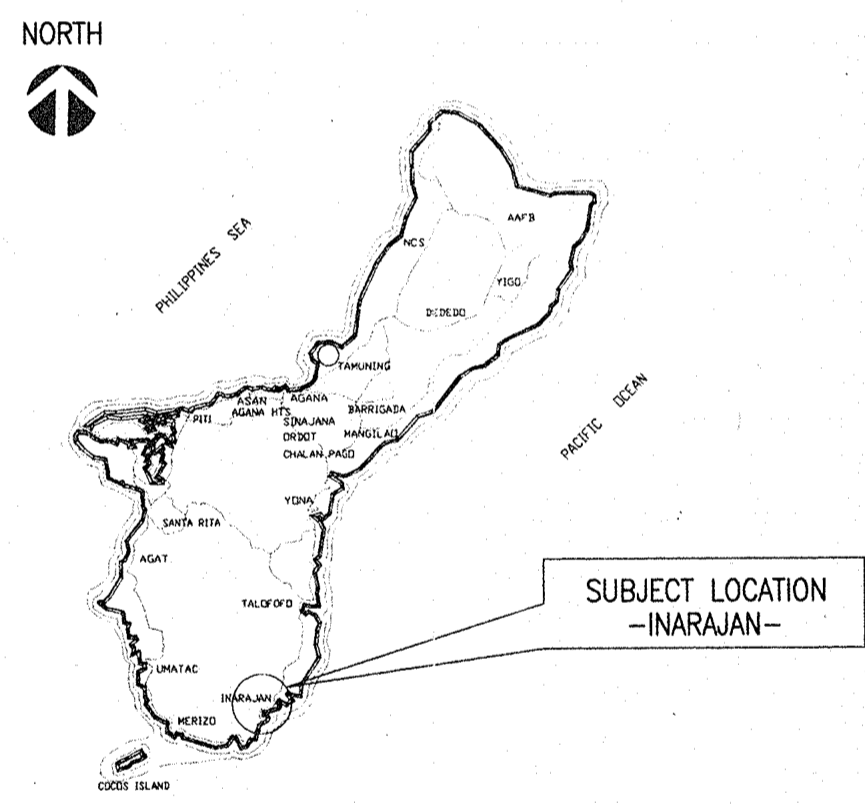
GUAM



SITE PLAN
 NOT TO SCALE



VICINITY MAP



LIST OF DRAWINGS

SHEET NO.	DESCRIPTION
T-1	TITLE SHEET, LIST OF DRAWINGS, SUBJECT LOCATION AND SITE PLAN
S-1	SPECIFICATION FOR CONCRETE REPAIR AND REPAIR NOTES
S-2	FOOTING PLAN, FLOOR FRAMING PLAN AND SECTION/DETAILS

PROJECT: HOUSE REHABILITATION/STABILIZATION
 OWNER: ANA LEON GUERREIRO
 INARAJAN, SALAJALLA ST., GUAM

SHEET CONTENT:
 TITLE SHEET
 SITE PLAN
 SUBJECT LOCATION
 LIST OF DRAWINGS

DESIGNED BY: CPA
 CHECKED BY: CPA
 DRAWN BY: RGG
 SUPERVISED BY: CPA
 DATE: JULY '97

SHEET NUMBER:
T-1
 1 OF 3

SPECIFICATION FOR CONCRETE REPAIR:

PART 1 - GENERAL :

1.00 RELATED DOCUMENTS :

- A. DRAWINGS : GENERAL CONDITIONS, GENERAL REQUIREMENTS AND OTHER APPLICABLE TECHNICAL SPECIFICATIONS APPLY TO WORK OF THIS SECTION.

1.01 DESCRIPTION OF WORK :

- A. PREPARATION OF CONCRETE AND APPLICATION OF REPAIR MATERIALS
- B. RESTORATION OF CONCRETE SURFACES.

1.02 RELATED SECTIONS:

- A. SEE CONSTRUCTION NOTES .

1.03 REFERENCES:

- A. REFERENCE STANDARDS : COMPLY WITH THE REQUIREMENTS OF THE REFERENCE STANDARDS (LATEST EDITION) NOTED HEREIN, EXCEPT WHERE MORE STRINGENT REQUIREMENT ARE LISTED HEREIN OR OTHERWISE REQUIRED BY THE CONTRACT DOCUMENTS.
 1. ANSI/ASTM C882 - BOND STRENGTH OF EPOXY-RESIN SYSTEMS USED WITH CONCRETE.
 2. ANSI /AWS D1.4 - STRUCTURAL WELDING CODE FOR REINFORCING STEEL.
 3. ASTM A82 - COLD-DRAWN STEEL WIRE FOR CONCRETE REINFORCEMENT.
 4. ASTM A615 - DEFORMED AND PLAIN BILLET- STEEL BARS FOR CONCRETE REINFORCEMENT.
 5. ASTM C33 - CONCRETE AGGREGATES.
 6. ASTM C150 - PORTLAND CEMENT.
 7. ASTM D638 - TENSILE PROPERTIES OF PLASTICS.
 8. ASTM D695 - COMPRESSIVE PROPERTIES OF RIGID PLASTICS.
 9. ASTM D790 - FLEXURAL PROPERTIES OF UNREINFORCED AND REINFORCED PLASTICS AND ELECTRICAL INSULATING MATERIALS.

1.04 PROJECT RECORD DOCUMENTS:

- A. SUBMIT PRODUCT DOCUMENTS.

1.05 QUALITY ASSURANCE:

- A. MATERIALS MANUFACTURER: COMPANY SPECIALIZING IN MANUFACTURING THE PRODUCTS SPECIFIED IN THIS SECTION WITH MINIMUM THREE YEARS DOCUMENTED EXPERIENCE.
- B. APPLICATOR: COMPANY SPECIALIZING IN CONCRETE REPAIR WITH MINIMUM 3 YEARS DOCUMENTED EXPERIENCE, APPROVED BY MATERIALS MANUFACTURER.
- C. WELDING: ANSI/AWS D1.4.

PART 2 - PRODUCTS

2.01 PATCHING MATERIALS:

- A. EPOXY RESIN: TWO-PART EPOXY ADHESIVE CONTAINING 100 PERCENT SOLIDS, MEETING THE FOLLOWING MINIMUM CHARACTERISTICS:

CHARACTERISTIC	TEST METHOD	RESULTS
BOND STRENGTH	ANSI/ASTM C882	2,700 PSI
TENSILE STRENGTH	ASTM D638	6,600 PSI
ELONGATION	ASTM D638	2 PERCENT AT 7 DAYS AT 70 F
FLEXURAL STRENGTH	ASTM D790	8,000 PSI
COMPRESSIVE STRENGTH	ASTM D695	6,500 PSI

- B. BONDING AGENT: POLYVINYL ACETATE EMULSION, DISPERSED IN WATER WHILE MIXING NON-COAGULANT IN MIX, WATER RESISTANT WHEN CURED.
- C. PORTLAND CEMENT: ASTM C150, TYPE I OR JIS R 5210 ORDINARY.
- D. SAND: ASTM C33; CLEAN
- E. WATER: CLEAN AND POTABLE
- F. CLEANING AGENT: COMMERCIAL MURIATIC ACID.

2.02 REINFORCEMENT MATERIALS:

- A. REINFORCING STEEL: ASTM A615, 40 KSI YIELD GRADE BILLET-STEEL DEFORMED BARS, UNCOATED FINISH.

2.03 MIXING EPOXY MORTARS:

- A. MIX EPOXY MORTARS IN ACCORDANCE WITH MANUFACTURER'S INSTRUCTIONS FOR PURPOSE INTENDED.
- B. MIX COMPONENTS IN CLEAN EQUIPMENT OR CONTAINERS. CONFORM TO POT LIFE AND WORKABILITY LIMITS.

2.04 MIXING CEMENTITIOUS MATERIALS:

- A. MIX CEMENTITIOUS MORTAR IN ACCORDANCE WITH MANUFACTURER'S INSTRUCTIONS FOR PURPOSE INTENDED.
- B. INCLUDE BONDING AGENT AS ADDITIVE TO MIX.

PART 3 - EXECUTION

3.01 EXAMINATION:

- A. VERIFY BY VISUAL INSPECTION THAT SURFACES ARE READY TO RECEIVE WORK.
- B. BEGINNING OF INSTALLATION MEANS INSTALLER ACCEPTS EXISTING SURFACES.

3.02 PREPARATION:

- A. CLEAN CONCRETE SURFACES OF SCALING DIRT, LAITANCE, CORROSION, OR OTHER CONTAMINATION AND WIRE BRUSH USING HIGH PRESSURE POTABLE WATER. RINSE SURFACE AND ALLOW TO DRY.
- B. FLUSH OUT CRACKS AND VOIDS WITH POTABLE WATER TO REMOVE LAITANCE AND DIRT.
- C. PROVIDE TEMPORARY ENTRY PORTS SPACED TO ACCOMPLISH MOVEMENT OF FLUIDS BETWEEN PORTS; NO DEEPER THAN THE DEPTH OF THE CRACK TO BE FILLED. LIMIT PORT SIZE DIAMETER TO BE NO GREATER THAN THE THICKNESS OF THE CRACK. PROVIDE TEMPORARY SEAL AT CONCRETE SURFACE TO PREVENT LEAKAGE OF ADHESIVE.
- D. FOR AREAS PATCHED WITH EPOXY MORTAR, REMOVE BROKEN AND SOFT CONCRETE 1/4 INCH DEEP OR MORE AS NECESSARY. REMOVE CORROSION FROM STEEL. CLEAN SURFACES MECHANICALLY AND RINSE WITH POTABLE WATER.
- E. WIRE BRUSH CLEAN THE EXPOSED REINFORCEMENT STEEL SURFACES. MECHANICALLY CUT AWAY DAMAGED PORTIONS OF BAR.
- F. DEEP DEFECTS EXPOSING REINFORCING: CHIP TO SOUND CONCRETE AND CLEAN THOROUGHLY TO REMOVE ALL LOOSE CONCRETE AND DUST. APPLY THIN COAT OF SPECIFIED EPOXY ADHESIVE. FORM AND POUR, OR DRY PACK WITH SPECIFIED NON-METALLIC, NON-SHRINK GROUT, PRIOR TO DEVELOPMENT OF TACK-FREE CONDITION OF EPOXY ADHESIVE. STRIP FORMS AFTER GROUT HAS HARDENED AND PROVIDE SPECIFIED FINISH. MOIST CURE OR APPLY SPECIFIED CLEAR CURING AND SEALING COMPOUND IMMEDIATELY AFTER FINISHING.
- G. DEFECTS GREATER THAN 1/2 INCH DEPTH NOT EXPOSING REINFORCING: CHIP AND CLEAN TO EXPOSE A FRACTURED AGGREGATE PROFILE. APPLY SPECIFIED EPOXY ADHESIVE. DRY PACK USING SPECIFIED NON-METALLIC, NON-SHRINK GROUT PRIOR TO DEVELOPMENT OF TACK-FREE CONDITION OF EPOXY ADHESIVE. PROVIDE SPECIFIED FINISH AND CURE AS SPECIFIED ABOVE.

3.03 REPAIR WORK:

- A. REPAIR REINFORCEMENT BY WELDING NEW BAR REINFORCEMENT TO EXISTING REINFORCEMENT WITH SLEEVE SPLICES. WELDED SPLICES AND REINFORCEMENT TO DEVELOP 125% OF YIELD STRENGTH VALUE.

3.04 INJECTION - EPOXY RESIN ADHESIVE:

- A. INJECT ADHESIVE INTO PREPARED PORTS UNDER PRESSURE USING EQUIPMENT APPROPRIATE FOR PARTICULAR APPLICATION.
- B. BEGIN INJECTION AT LOWER ENTRY PORT AND CONTINUE UNTIL ADHESIVE APPEARS IN ADJACENT ENTRY PORT. CONTINUE FROM PORT TO PORT UNTIL ENTIRE CRACK IS FILLED.
- C. REMOVE TEMPORARY SEAL AND EXCESSIVE ADHESIVE.
- D. CLEAN SURFACES ADJACENT TO REPAIR AND BLEND FINISH.

3.05 APPLICATION - EPOXY MORTAR:

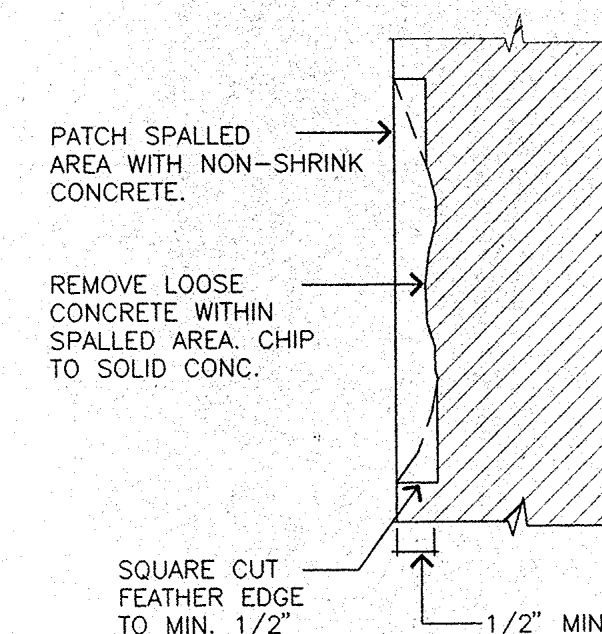
- A. TROWEL APPLY MORTAR MIX TO AN AVERAGE THICKNESS OF 0.5 INCHES. TAMP INTO PLACE FILLING VOIDS AT SPALLED AREAS.
- B. FOR PATCHING HONEYCOMB, TROWEL MORTAR ONTO SURFACE, WORKING INTO HONEYCOMB TO BRING SURFACE FLUSH WITH SURROUNDING AREA. FINISH TROWEL SURFACE TO MATCH SURROUNDING AREA.
- C. COVER EXPOSED STEEL REINFORCEMENT WITH EPOXY MORTAR AND FEATHER EDGES TO FLUSH SURFACE.

3.06 APPLICATION - CEMENTITIOUS MORTAR:

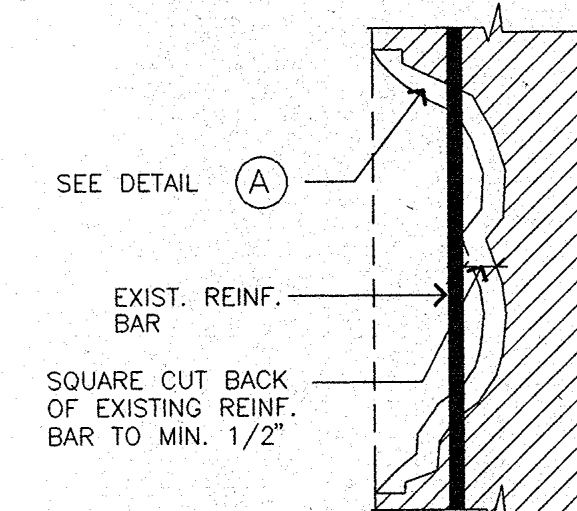
- A. APPLY COATING OF BONDING AGENT TO DRY CONCRETE SURFACES. PROVIDE FULL SURFACE COVERAGE.
- B. APPLY CEMENTITIOUS MORTAR BY STEEL TROWEL TO AN AVERAGE THICKNESS OF 3/8 INCHES. TAMP INTO PLACE FILLING VOIDS AT SPALLED AREAS. WORK MIX INTO HONEYCOMB.
- C. DAMP CURE CEMENTITIOUS MORTAR AND GROUT FOR AT LEAST FOUR (4) DAYS.

REPAIR NOTES:

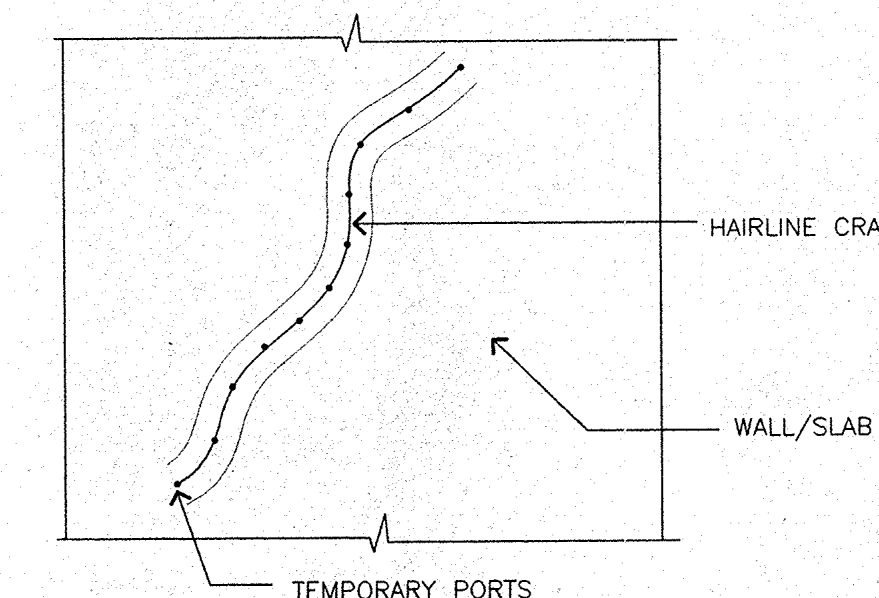
1. THE STRUCTURAL REPAIR INDICATED ON THESE REPAIR DRAWINGS WERE DEEMED TO RESTORE THE BUILDING TO THEIR STRUCTURAL INTEGRITY. THE REPAIR HOWEVER, DO NOT CONSTITUTE AN UPGRADING TO MEET THE CURRENT CODE.
2. THE SUMMARY OF DAMAGE ASSESSMENT FOR THE BUILDING PREPARED BY E & A ENGINEERS, IS HEREBY MADE PART OF THESE DRAWINGS.
3. THE CRACKS DELAMINATION AND DAMAGES INDICATED ON THESE DRAWINGS REFLECT WHAT HAVE BEEN OBSERVED AT THE TIME OF ASSESSMENT AND THE PREPARATION OF THE REPAIR DRAWINGS. THE CONTRACTOR SHALL MAKE A THOROUGH INSPECTION TO VERIFY THE DAMAGES INDICATED OR ANY DAMAGES THAT MAY HAVE NOT BEEN PREVIOUSLY OBSERVED. NOTE THAT CRACKS/SPALLS LOCATED OR NOT ON THESE DRAWINGS SHALL BE REPAIRED ACCORDINGLY.
4. ALL DELAMINATIONS SHALL BE REMOVED AND REPLACE WITH NON-SHRINK CONCRETE.
5. CONCRETE WITH CRACKS DELAMINATIONS SHALL NOT BE INJECTED WITH EPOXY.



(A) SPALLED/DELAMINATED CONCRETE REPAIR
NTS



(B) SPALLED/DELAMINATED CONC. WITH EXPOSED REINF. BARS
NTS

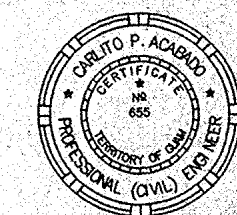


NOTE:
1. INJECT EPOXY FROM LOWEST UNFILLED PORT TO THE NEXT TILL THE WHOLE EXTENT OF THE CRACK HAS BEEN FILLED.

(C) HAIRLINE CRACK REPAIR
NTS

EVANGELISTA-ACABADO
ENGINEERS, INC.
dba
E & A
ENGINEERS

ABC BLDG. SUITE 06, TAMUNING, GUAM
P.O. BOX 3163, AGANA, GUAM 96911
tel. (671) 649-6258 fax (671) 649-6252



I CERTIFY THAT THIS
DRAWING WAS PREPARED
BY ME OR UNDER MY
DIRECT SUPERVISION

PROJECT :
HOUSE REHABILITATION/STABILIZATION
OWNER :
ANA LEON GUIERRO
INARAJAN, SALAJALLA ST., GUAM

REVISION

SHEET CONTENT:
SPECIFICATION FOR CONCRETE REPAIR
REPAIR NOTES

DESIGNED BY: CFA
CHECKED BY: CFA
DRAWN BY: R55
SUPERVISED BY: CFA
DATE: JULY '91

SHEET NUMBER:
S-1
2 OF 3