

1/2" = 1'-0" SECOND FLOOR

1/4" = 1'-0" GROUND FLOOR

1 ELECTRICAL PLAN
SCALE: 1/4" = 1'-0"

LIGHTING FIXTURE SCHEDULE

MOUNTING HEIGHT SCHED. (UNLESS OTHERWISE NOTED)

FIXTURE TYPE	LAMP DATA		MOUNTING		DESCRIPTIONS	MANUFACTURER'S CAT. NO. OR APPROVED EQUAL
	NO.	WATT	CEILING	WALL		
A	1	60	SURF		12 3/4" x 12 3/4" SQUARE x 4 9/16" D INCANDESCENT LIGHT FIXTURE, OAK FINISH	TIMBLY LIGHTING 5910A
B	1	40	SURF		12" x 12" x 4 1/2" D FLUORESCENT LIGHT FIXTURE, OAK FINISH	TIMBLY LIGHTING 221A
C	1	60	SURF		10 5/8" x 10 5/8" x 5" D INCANDESCENT LIGHT FIXTURE	TIMBLY LIGHTING 460WH
D	1	60	SURF		10 1/4" x 10 1/4" SQUARE x 4 1/2" D INCANDESCENT LIGHT FIXTURE, SUITABLE FOR WET LOCATION	TIMBLY LIGHTING 4000K
E	1	75		SURF	4 1/2" x 12 1/2" x 4 1/2" D INCANDESCENT LIGHT FIXTURE, MOUNTED ABOVE MIRROR	TIMBLY LIGHTING 6752 WH
F	1	60		SURF	9" x 12 1/2" x 8 1/2" D INCANDESCENT LIGHT FIXTURE, SUITABLE FOR WET LOCATION	TIMBLY LIGHTING 4024 BK
G	1	60		SURF	10 1/4" x 10 1/4" SQUARE x 4 1/2" D INCANDESCENT LIGHT FIXTURE, SUITABLE FOR WET LOCATION	TIMBLY LIGHTING 4031 BK
H	1	75		SURF	12 1/4" DIAMETER INCANDESCENT LIGHT FIXTURE, MATTE WHITE BLACK FINISH	PROBOWITE 4801
J	4	60		SURF	2 1/2" x 7 1/2" x 5 1/4" D INCANDESCENT LIGHT FIXTURE, MOUNTED ABOVE MIRROR	TIMBLY LIGHTING 249-1 WH
K	1	75		SURF	9 3/4" x 4 3/4" D INCANDESCENT LIGHT FIXTURE, BLACK DIE-CAST ALUMINUM BASE	PROBOWITE 4012

DEVICE OR PAN	MOUNTING HEIGHT	REFERENCE POINT				REMARKS
		FUR	CEILING	TO	TOP OF	
⊙	1' - 0"	•				
⊙ SFI	8"	•				ABOVE KITCHEN COUNTER AND LAVATORY
⊙	1' - 0"	•				
⊙	3' - 0"	•				FOR WASHING MACHINE AND DRYER
⊙	1' - 0"	•				
⊙	1' - 0"	•				
⊙	4' - 0"	•				
⊙	5' - 0"	•				
⊙	6' - 0"	•				

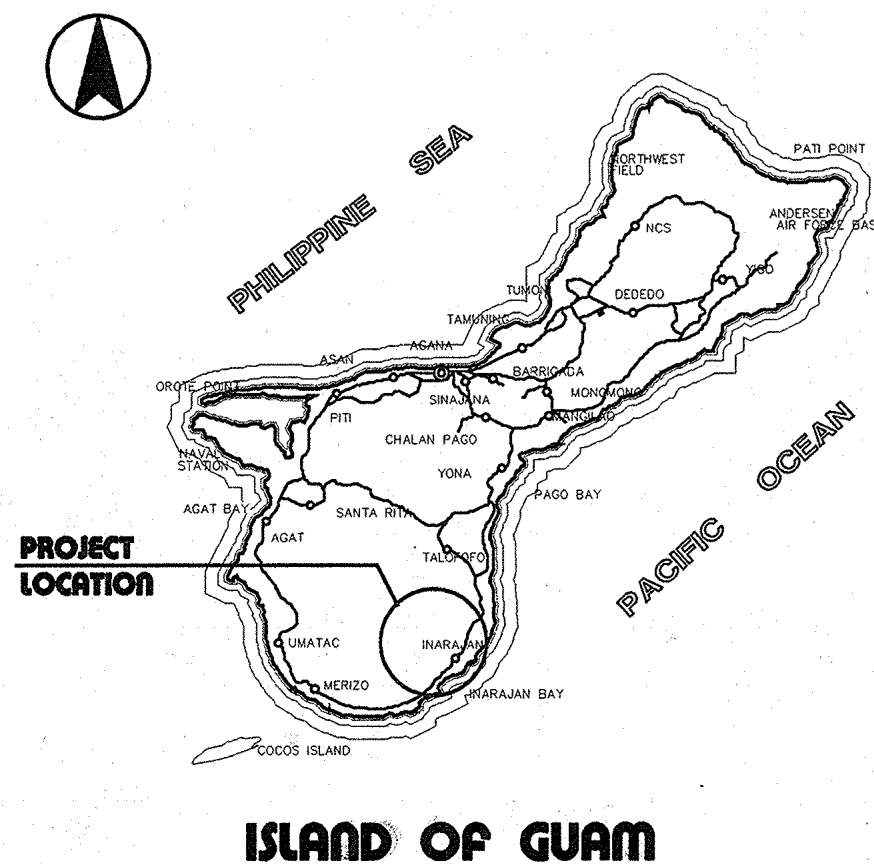
REVISION	DATE	BY	DESCRIPTION	APPROVED
PROJECT NO. PIA 91-047			GUAM PRESERVATION TRUST P.O. BOX 3036 AGANA, GUAM 96910 TEL: 648-1221 FAX: 648-1155	
CONTRACT NO.				
DESIGNED BY: ERC			INARAJAN VILLAGE HISTORIC RESTORATION PEDRO ASANOMA HOUSE ELECTRICAL PLAN/GROUND/SECOND FLOOR, LIGHTING FIXTURE/MOUNTING HT SCHEDULE & ELEVATION	
DRAWN BY: CVA			RECOMMENDED APPROVAL DATE:	
CHECKED BY: ERC			DATE:	
			GUAM PRESERVATION TRUST ERC ASSOCIATES P.O. BOX 119 AGANA, GUAM 96910 TEL: 648-2464 (EXT) 1034-1037 ARCHITECTS - PLANNERS - ENGINEERS	
			DRAWER NO: DATE:	
			DRAWING NUMBER: E-2	
			SHEET 12 OF 12	

HISTORIC RESTORATION

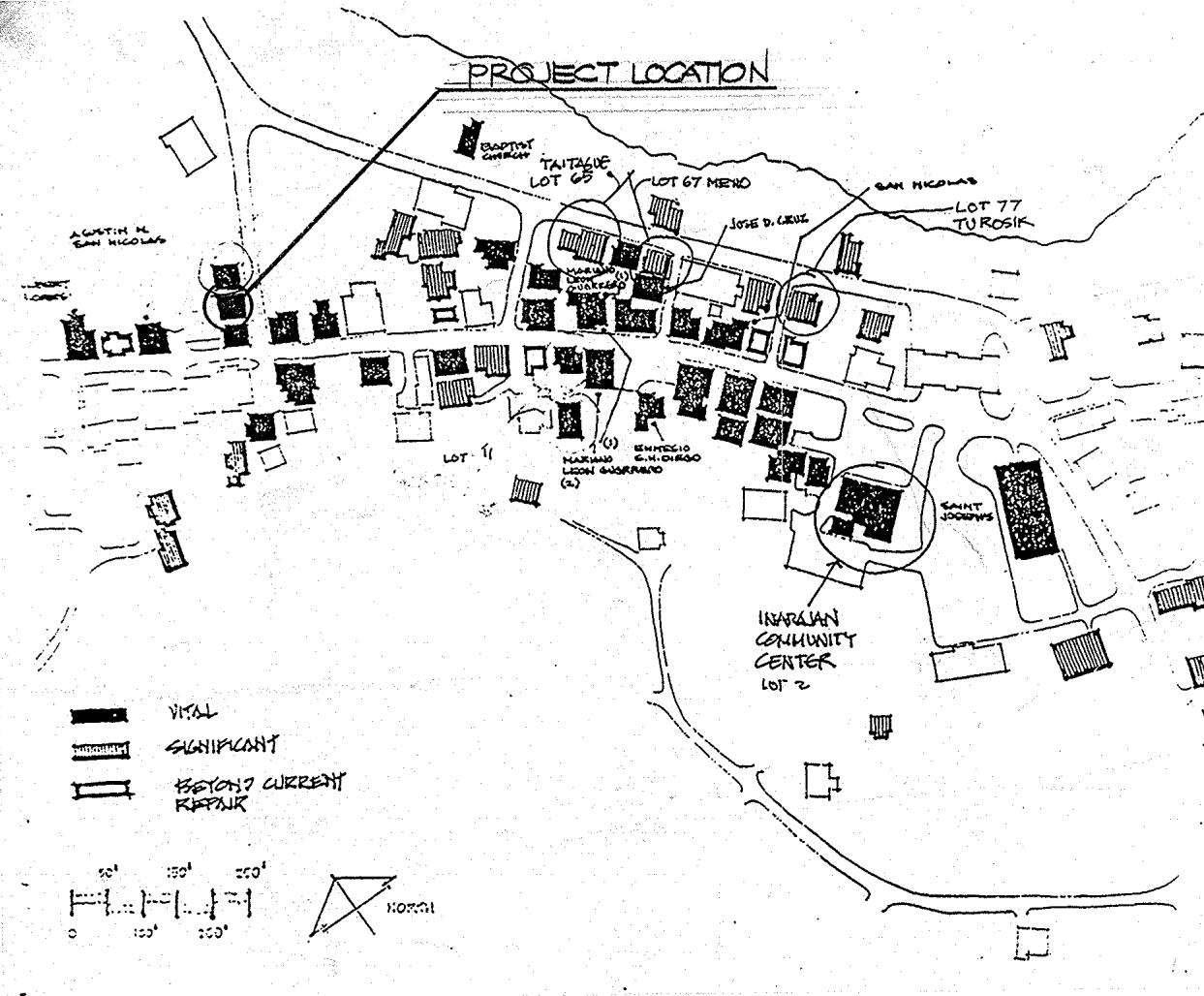
PEDRO ASANOMA HOUSE

INARAJAN VILLAGE GUAM

LOCATION MAP



VICINITY PLAN



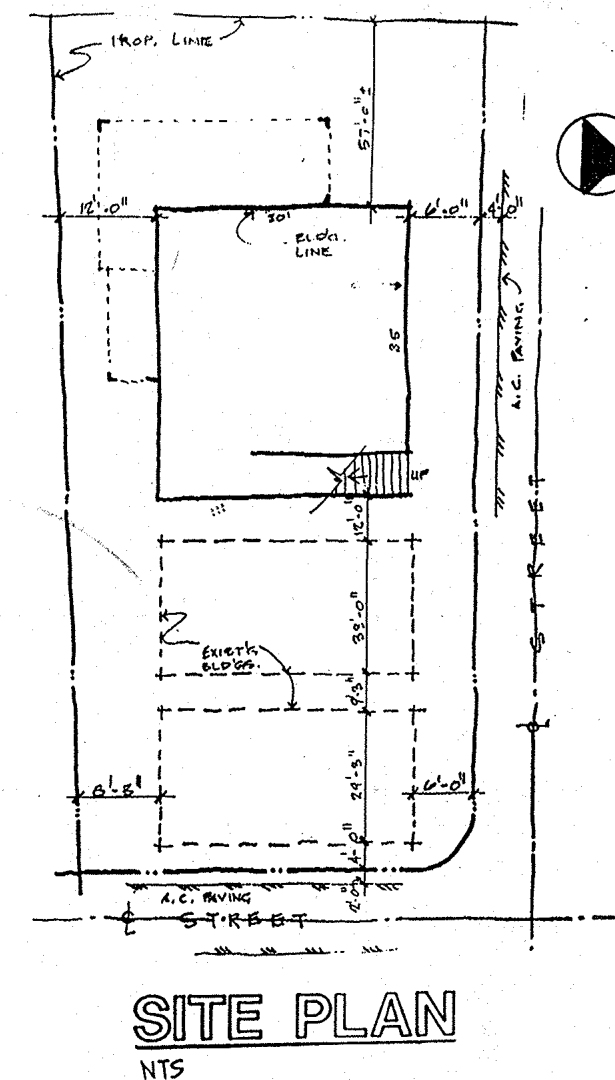
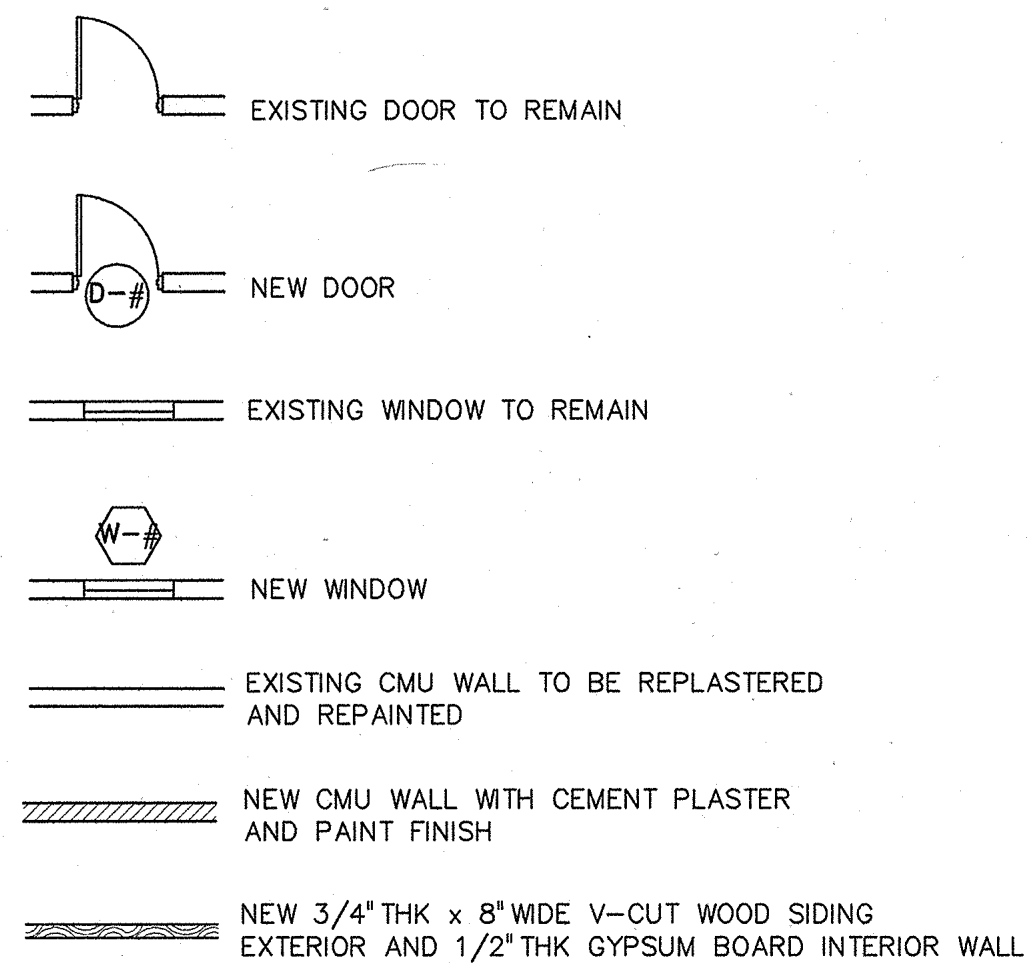
INDEX OF DRAWINGS

SHT. NO.	DWG. NO.	DESCRIPTION
1 OF 12	T-1	PROJECT TITLE, LOCATION MAP, VICINITY MAP, INDEX OF DRAWINGS, ABBREVIATIONS, AND LEGEND & SYMBOLS
2 OF 12	A-1	EXISTING FLOOR PLAN, EXISTING ELEVATIONS AND SCOPE OF WORK
3 OF 12	A-2	GROUND AND SECOND FLOOR PLANS AND BUILDING ELEVATIONS - NEW CONDITION
4 OF 12	A-3	BUILDING ELEVATIONS, BUILDING SECTIONS AND ROOF PLAN
5 OF 12	A-4	GROUND AND SECOND FLOOR REFLECTED CEILING PLANS, AND TYPICAL CEILING DETAILS
6 OF 12	A-5	TOILET AND KITCHEN PARTIAL PLANS AND INTERIOR ELEVATIONS
7 OF 12	A-6	MISCELLANEOUS DETAILS
8 OF 12	A-7	DOOR AND WINDOW SCHEDULE, ELEVATIONS AND DETAILS
9 OF 12	P-1	GROUND AND SECOND FLOOR PLUMBING PLANS AND PLUMBING DETAILS
10 OF 12	P-2	PIPING ISOMETRIC, PLUMBING FIXTURE SCHEDULE AND NOTES
11 OF 12	E-1	ELECTRICAL ONE LINE DIAGRAM, TV AND TELEPHONE DIAGRAM, NOTES AND SYMBOL LIST
12 OF 12	E-2	GROUND AND SECOND FLOOR ELECTRICAL PLAN, LIGHTING FIXTURE SCHEDULE, MOUNTING HEIGHT SCHEDULE AND ELEVATION

ABBREVIATIONS

AC	ASPHALTIC CONCRETE	L	LONG OR LENGTH
A/C	AIR-CONDITIONING	LAV	LAVATORY
AL	ALUMINUM	MATL	MATERIAL
BOTT	BOTTOM	MAX	MAXIMUM
CAB	CABINET	MECH	MECHANICAL
CL OR C	CENTER LINE	MFR	MANUFACTURER
CLG	CEILING	MIN	MINIMUM
CMT	CERAMIC MOSAIC TILE	MISC	MISCELLANEOUS
CMU	CONCRETE MASONRY UNIT	MO	MASONRY OPENING
COL	COLUMN	NTS	NOT TO SCALE
CONC	CONCRETE	OC	ON CENTER
CONT	CONTINUOUS OR CONTINUE	OCEW	ON CENTER EACH WAY
CPL	CEMENT PLASTER	OD	OUTSIDE DIAMETER
CPT	CARPET	PNL	PANEL
DET(S)	DETAIL(S)	QTY	QUANTITY
DN	DOWN	QT	QUARRY TILES
DWG(S)	DRAWING(S)	RC	REINFORCED CONCRETE
EA	EACH	REINF	REINFORCEMENT
EF	EACH FACE	R.O.	ROUGH OPENING
ELEC	ELECTRICAL	SF OR SQ FT	SQUARE FEET
EW	EACH WAY	SS	SERVICE SINK
EXH	EXHAUST	STL	STEEL
FD	FLOOR DRAIN	TEL	TELEPHONE
FDN	FOUNDATION	THK	THICK
FFL	FINISH FLOOR LINE	TYP	TYPICAL
FL	FLOOR	UR	URINAL
FIN	FINISH	WC	WATER CLOSET
GWB	GYPSUM WALLBOARD	WDO	WINDOW
HDCP	HANDICAP	W/	WITH
HGT	HEIGHT	W/O	WITHOUT
HORIZ	HORIZONTAL	WWF	WELDED WIRE FABRIC
JT	JOINT		

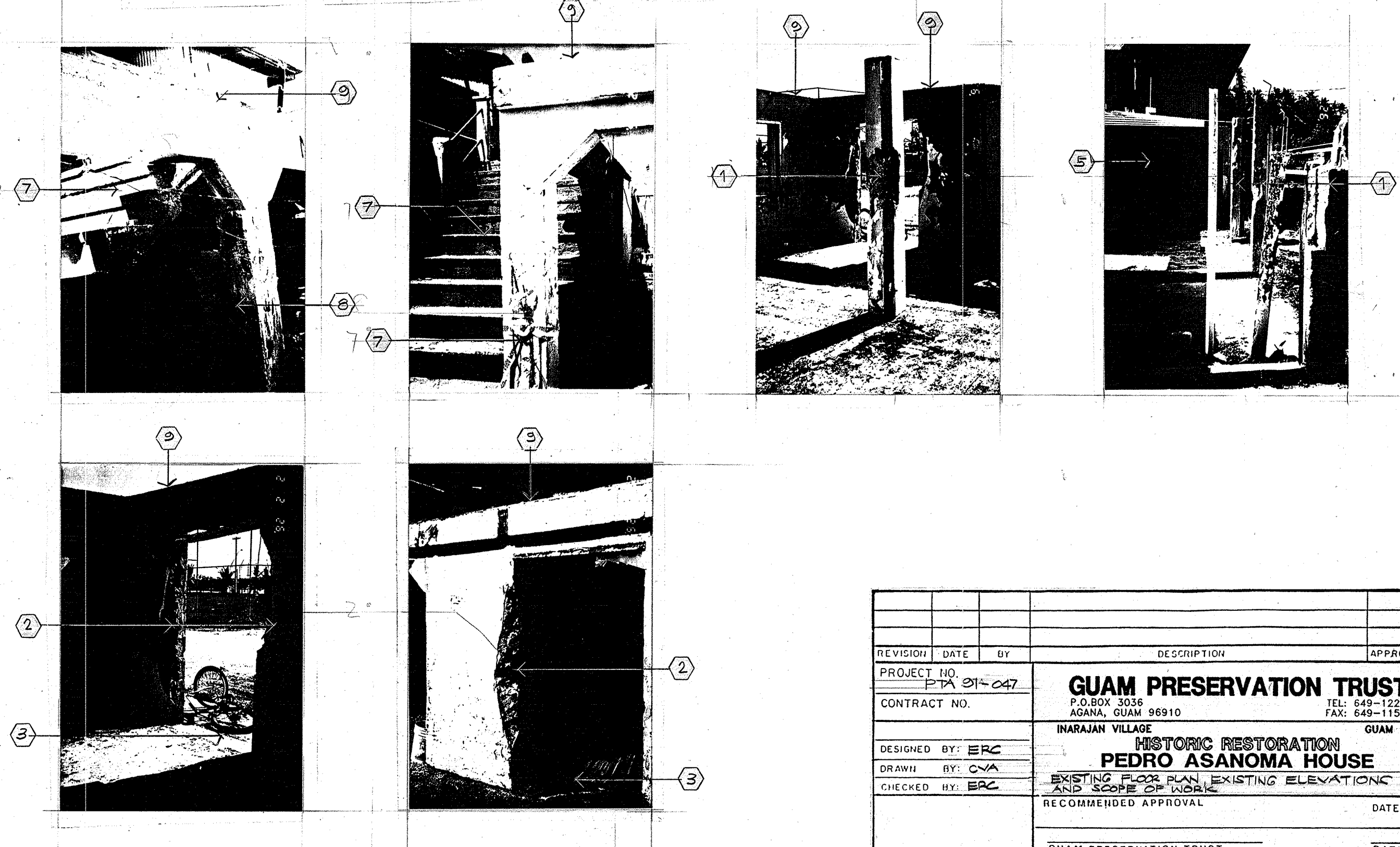
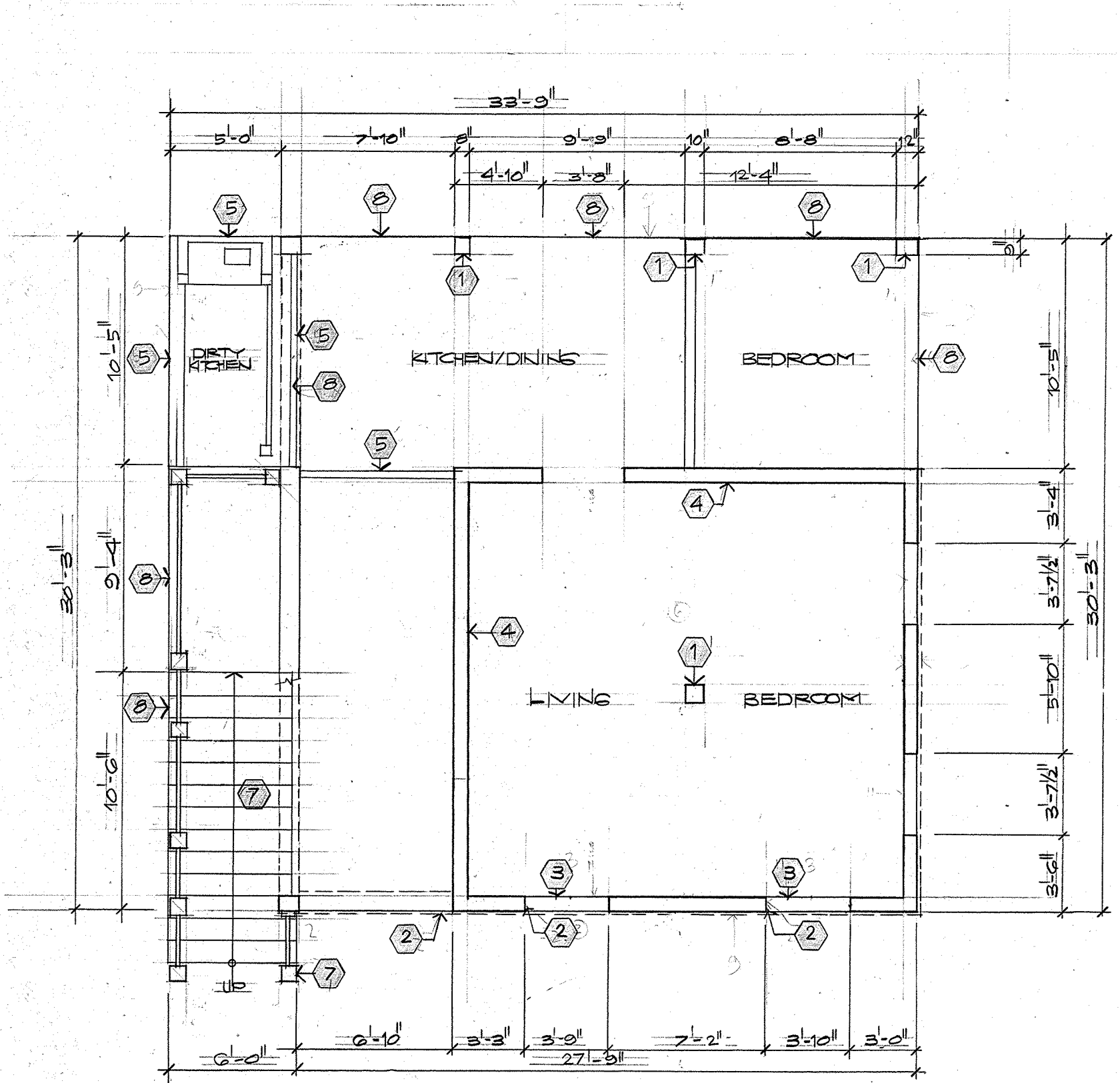
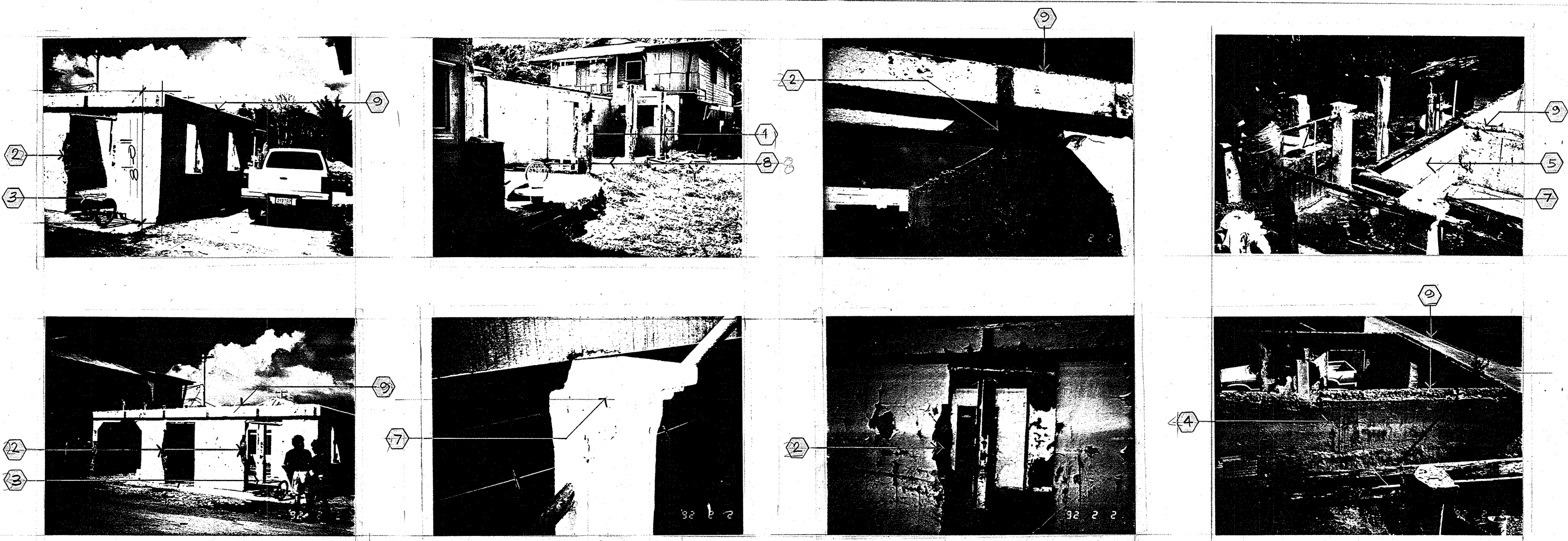
LEGEND & SYMBOLS



REVISION	DATE	BY	DESCRIPTION	APPROVED
PROJECT NO. PTA 91-047 CONTRACT NO. DESIGNED BY: ERC DRAWN BY: ERC CHECKED BY: ERC				
			GUAM PRESERVATION TRUST P.O. BOX 3036 AGANA, GUAM 96910 TEL: 649-1221 FAX: 649-1155	
			INARAJAN VILLAGE HISTORIC RESTORATION PEDRO ASANOMA HOUSE PROJECT TITLE, LOCATION MAP, VICINITY MAP, INDEX OF DRAWINGS, ABBREVIATIONS, LEGEND AND SYMBOLS	
			RECOMMENDED APPROVAL DATE:	
			GUAM PRESERVATION TRUST DATE:	
			ERC ASSOCIATES P.O. BOX 159 AGANA, GUAM 96910 TEL: (671) 649-2545 / 649-7583 FAX: (671) 649-1097 ARCHITECTS-ENGINEERS-CADD CONSTRUCTION MANAGEMENT	
			I CERTIFY THAT THIS WORK WAS PREPARED BY ME OR UNDER MY DIRECT SUPERVISION	
			DRAWER NO: DRAWING NUMBER: T-1 SHEET 1 OF 12	

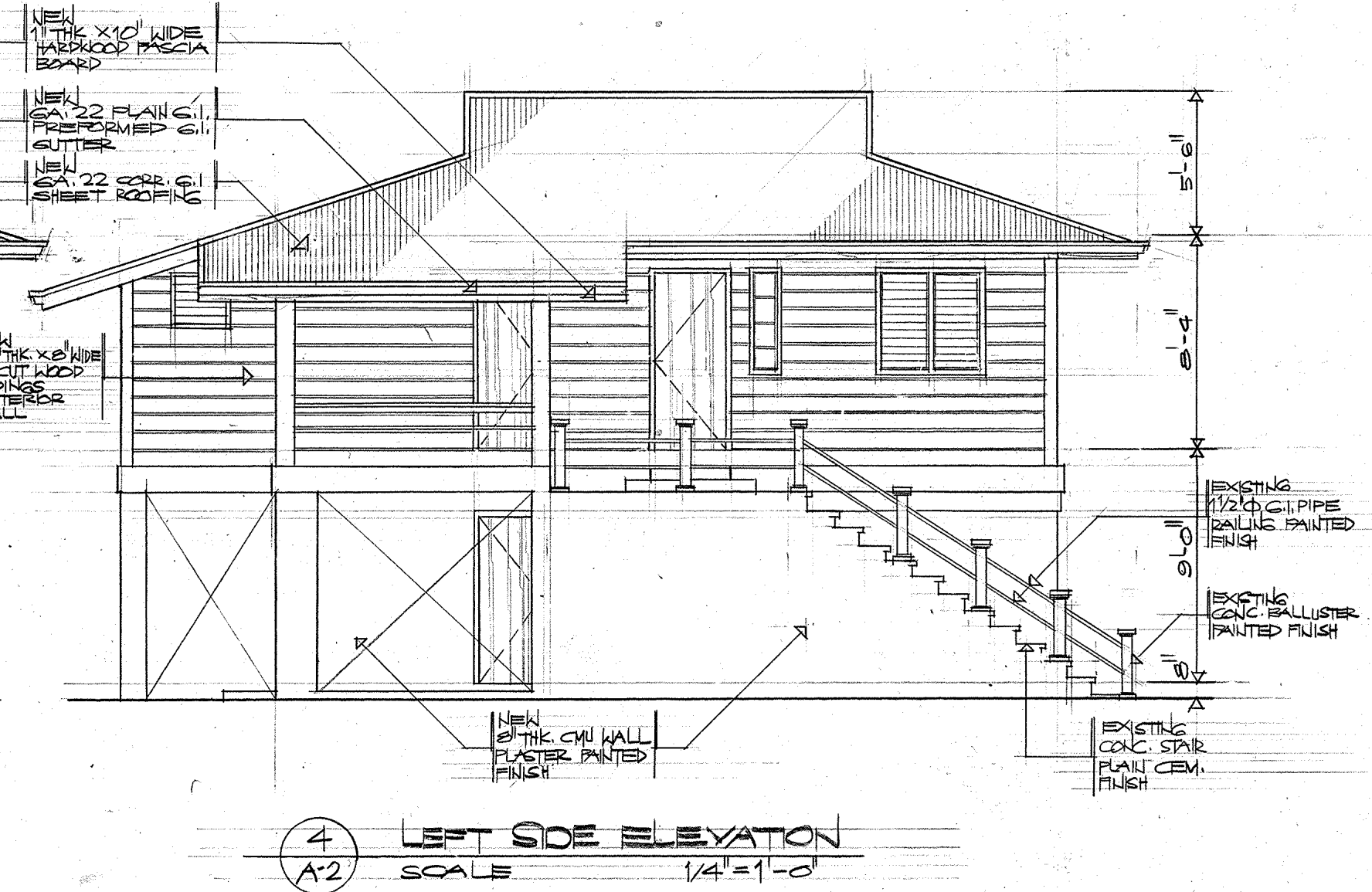
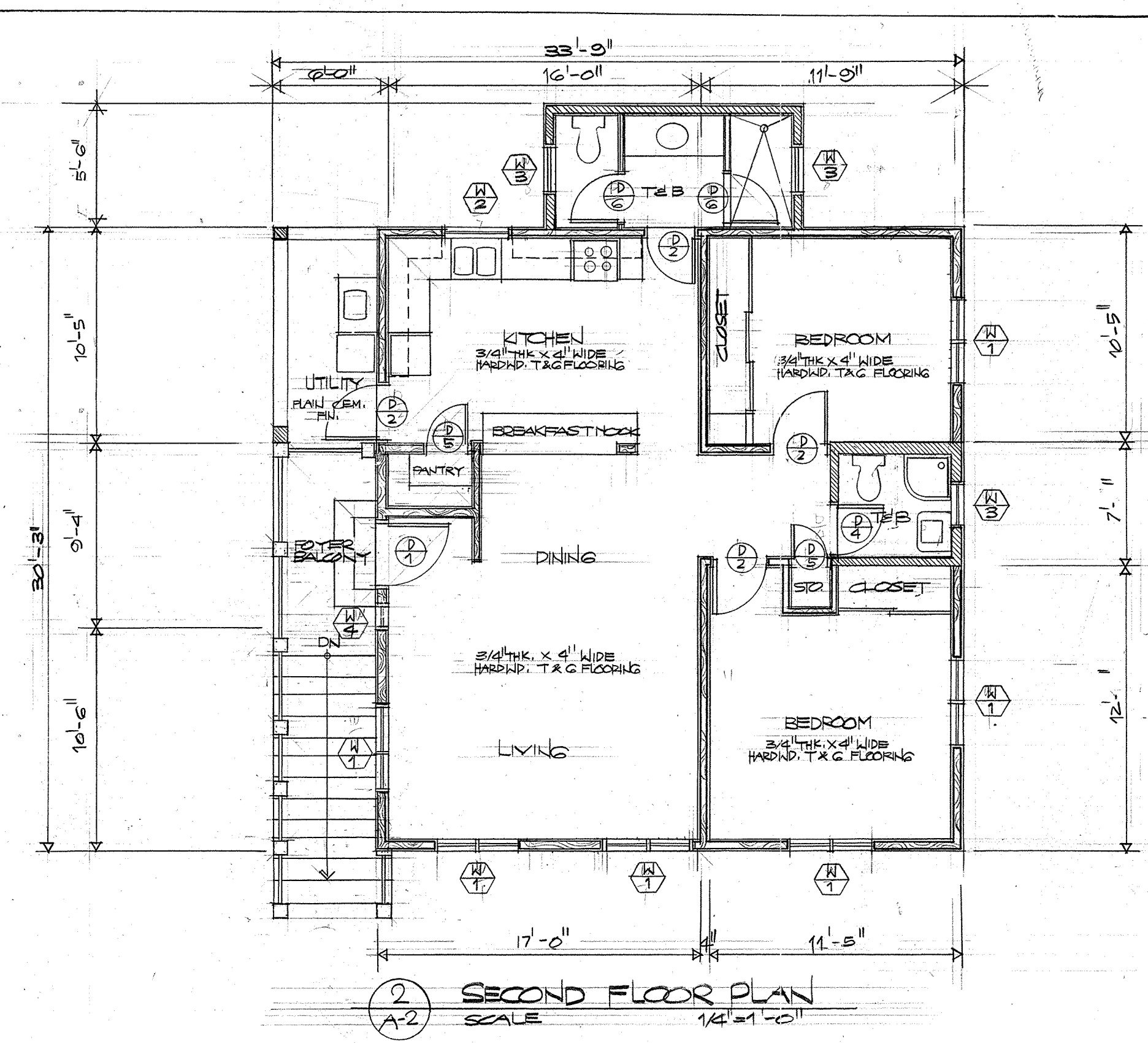
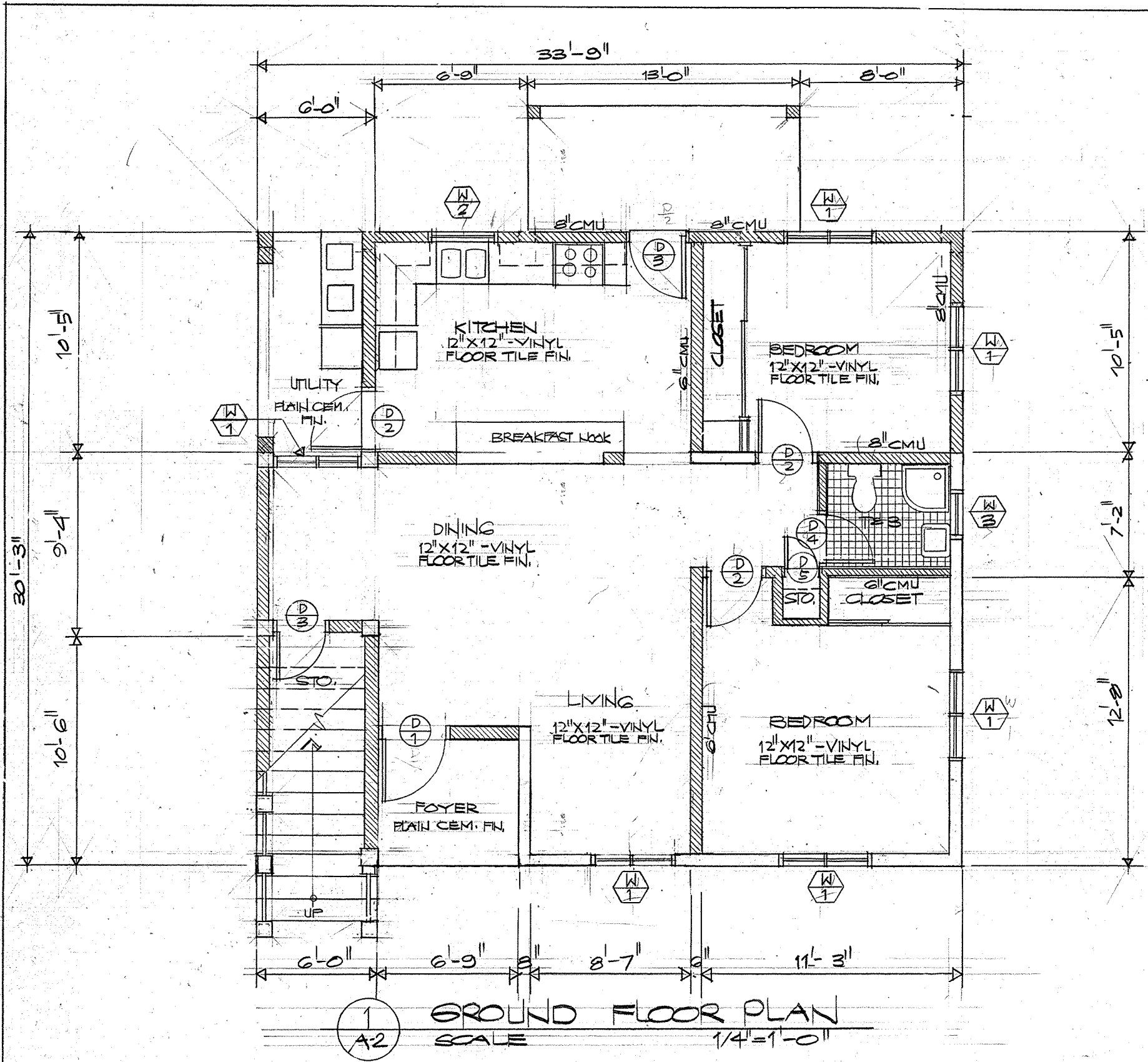
SCOPE OF WORK:

1. DEMOLISH EXISTING COLUMN AND REPLACE WITH NEW REINFORCED COLUMNS AND NEW FOOTING.
2. PATCH WITH CEMENT PLASTER EXISTING DAMAGED COLUMN AND WALLS FROM READING COMPOUND BETWEEN NEW AND EXISTING SURFACES
3. CONSTRUCT CMU WALL ON EXISTING WALL OPENING TO FIT NEW WINDOWS. REPAIR ALL CORNER ON ALL OPENING W/ CEMENT PLASTER.
4. DEMOLISH PARTIAL CONCRETE WALL AND REPAIR REMAINING WALL WITH CEMENT GROUT.
5. REMOVE EXISTING PLYWOOD PARTITIONS AND REPAIR AND PATCH WITH CEMENT ALL AFFECTED SURFACES.
6. CONSTRUCT NEW 4" THICK CONCRETE FLOOR 8" HIGH FROM THE EXISTING FLOOR LINE.
7. REPAIR AND RESTORE WITH CEMENT PLASTER EXISTING CONCRETE STAIR BALUSTER, NOSING AND STEPS.
8. CONSTRUCT NEW 4" THICK CMU WALL PARTITIONS BELOW THE STAIR & 8" THICK CMU WALL WHERE INDICATED IN THE NEW FLOOR PLAN.
9. CONSTRUCT NEW REINFORCED CONCRETE BEAM AROUND THE PERIMETER OF THE EXISTING WALL AND WHERE INDICATED IN THE PLAN.
10. CONSTRUCTION NEW WOOD FLOOR FRAMING, NEW WOOD WALL, NEW ROOF FRAMING AND GYPSUM BOARD PARTITIONS AS PER INDICATED.
11. INSTALL NEW GLASS LOUVER WINDOW WITH ALUMINUM FRAME, INSECT SCREEN AND ALUMINUM STORM SHUTTERS.
12. CONSTRUCT NEW WOOD DOORS AND WOOD FRAME COMPLETE WITH NEW HARDWARES AND LOCKSET.
13. CONSTRUCT NEW HIP ROOF TO MATCH EXISTING AS PER NEW PLAN AS INDICATED.
14. CONSTRUCT NEW CEILING WITH GYPSUM BOARD ON WOOD STUDS COMPLETE WITH CEILING SUPPORT.
15. CONSTRUCT NEW KITCHEN COUNTER AND WALL HUNG CABINET COMPLETE WITH DOUBLE STAINLESS STEEL SINK & SPACE FOR RANGE & REF.
16. REPAIR, RESTORE ALL ITEMS AFFECTED BY THIS CONSTRUCTION AND CLEAN CONSTRUCTION SITE PREMISES
17. CONSTRUCT AND INSTALL NEW ELECTRICAL LIGHTING & POWER SYSTEM COMPLETE WITH NEW ELECTRICAL FIXTURES AND ACCESSORIES.
18. CONSTRUCT AND INSTALL NEW PLUMBING & VENTILATION SYSTEM COMPLETE & HOOK-UP TO THE EXISTING SEWER & WATER LINE.
19. INSTALL VINYL FLOOR TILES AT FIRST FLOOR AREA AND WOOD FINISH AT SECOND FLOOR AREA.
20. INSTALL CERAMIC TILES AT BATHROOM FLOOR, WALL AND SHOWER AREA HEIGHTS AND DIMENSION AS INDICATED.
21. PREPARE NEW AND EXISTING SURFACES AND COAT WITH NEW PAINT ENTIRE RESIDENTIAL BUILDING.
22. REMOVE ALL DIRT, DEBRIS AND OTHER EXCESS CONSTRUCTION MATERIALS AND FINAL CLEAN-UP.



1 EXISTING GROUND FLOOR PLAN
A-1 SCALE 1/4" = 1'-0"

REVISION	DATE	BY	DESCRIPTION	APPROVED
PROJECT NO. PTA 01-047			GUAM PRESERVATION TRUST P.O. BOX 3036 AGANA, GUAM 96910 TEL: 649-1221 FAX: 649-1155	
CONTRACT NO.				
DESIGNED BY: ERC			INARAJAN VILLAGE HISTORIC RESTORATION PEDRO ASANOMA HOUSE EXISTING FLOOR PLAN, EXISTING ELEVATIONS AND SCOPE OF WORK	
DRAWN BY: CYA			RECOMMENDED APPROVAL DATE:	
CHECKED BY: ERC			DATE:	
			GUAM PRESERVATION TRUST ERC ASSOCIATES P.O. BOX 190 AGANA, GUAM 96910 TEL: 649-7141, 649-7803, 670-3148-1397 ARCHITECTS - PLANNERS - ENGINEERS	
			DRAWER NO: DRAWING NUMBER: A-1 SHEET 2 OF 12	

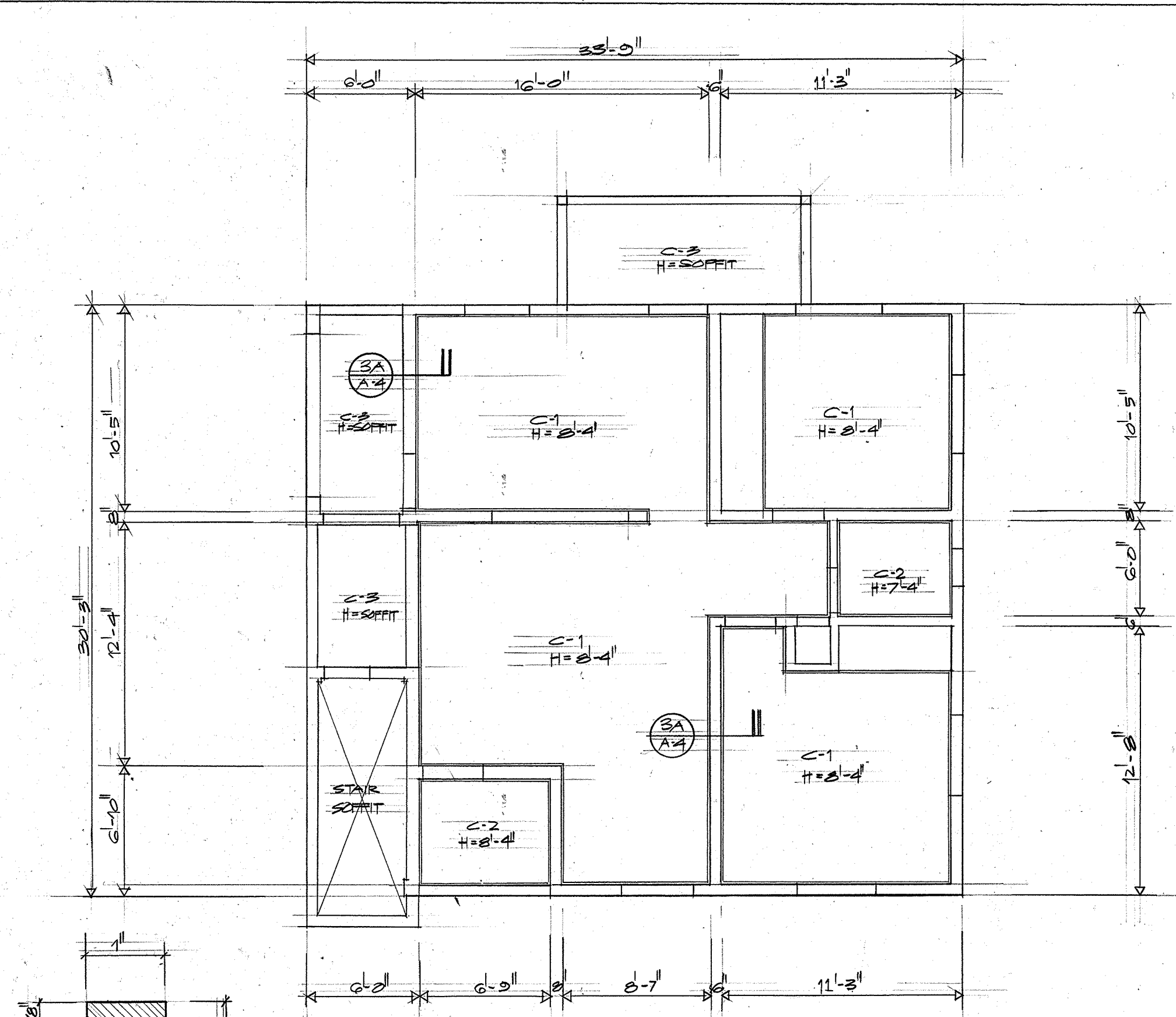


WALL TYPES

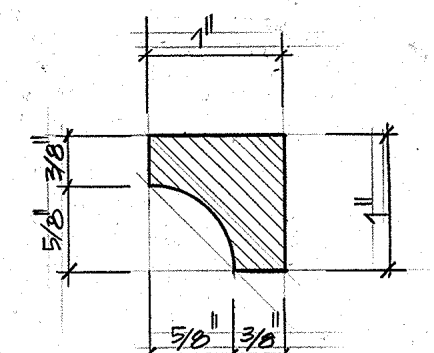
	EXISTING CMU WALL REPLASTERED AND REPAINTED
	NEW CMU WALL PLASTER PAINTED FINISH
	NEW 3/4" THK X 6" WIDE V-CUT WOOD SIDING EXTERIOR AND 1/2" THK GYPSUM BOARD INTERIOR WALL

REVISION	DATE	BY	DESCRIPTION	APPROVED
GUAM PRESERVATION TRUST P.O. BOX 3036 TEL: 649-1221 AGANA, GUAM 96910 FAX: 649-1155 INARAJAN VILLAGE GUAM HISTORIC RESTORATION PEDRO ASANOMA HOUSE GROUND & SECOND FLOOR PLANS & BUILDING ELEVATIONS - NEW CONDITIONS RECOMMENDED APPROVAL DATE: _____ GUAM PRESERVATION TRUST DATE: _____				
DESIGNED BY: EERC DRAWN BY: CVA CHECKED BY: EERC			DRAWER NO: _____ DRAWING NUMBER: A-2 SHEET 3 OF 12	

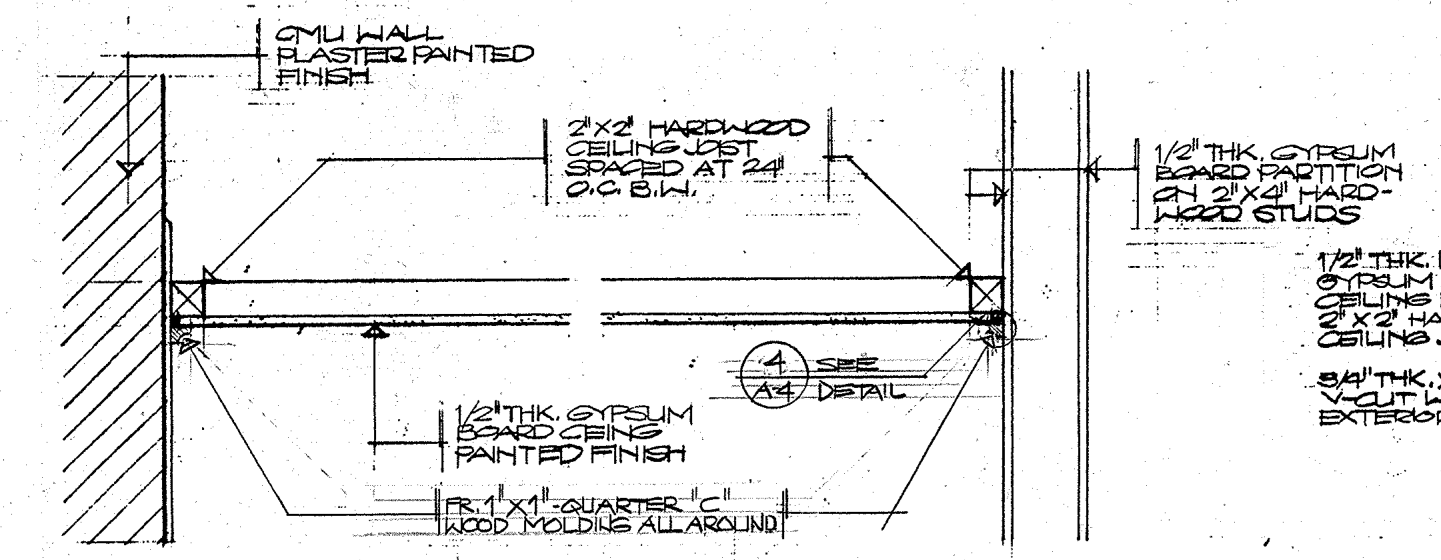




1 GROUND FLOOR REFLECTED CEILING PLAN
SCALE 1/4" = 1'-0"

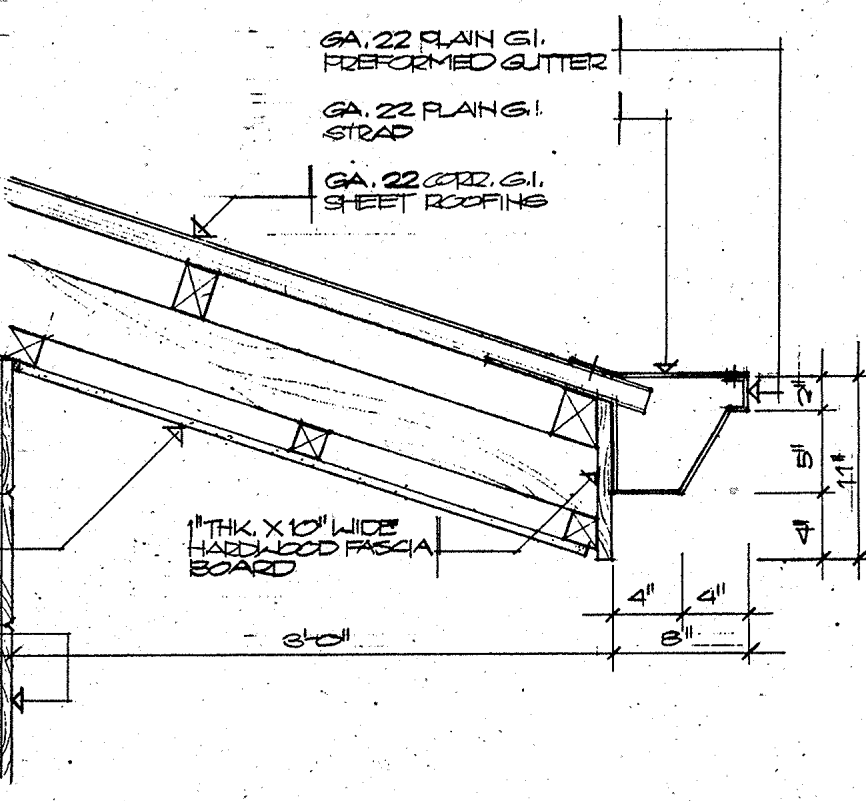


4 WOOD MOLDING DET.
SCALE FULL SIZE

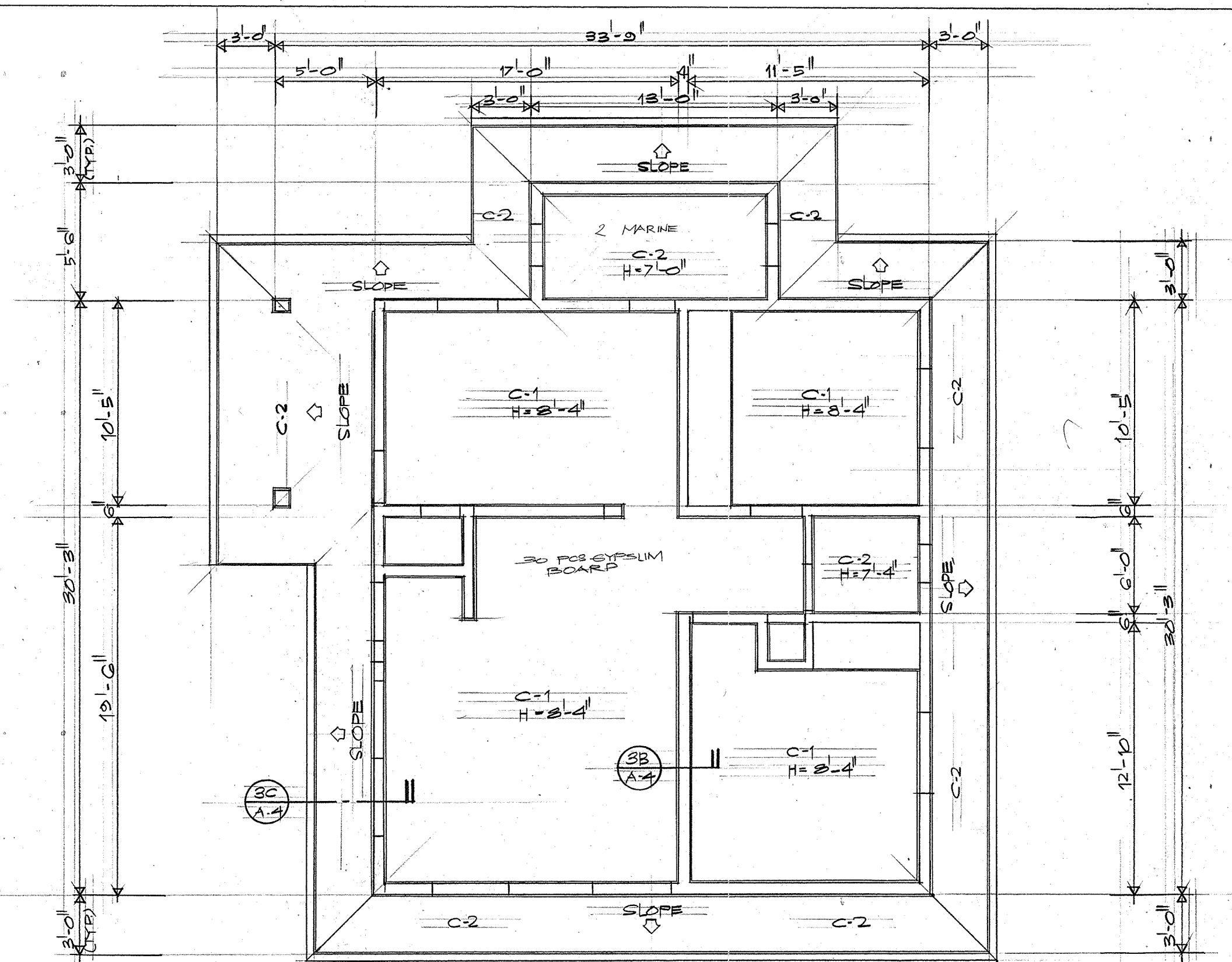


3A CMU WALL-CEILING CONN. 3B GYPSUM WALL-CEILING CONN.

3 TYPICAL CEILING DETAIL
SCALE 1/2" = 1'-0"



3C EAVES CEILING

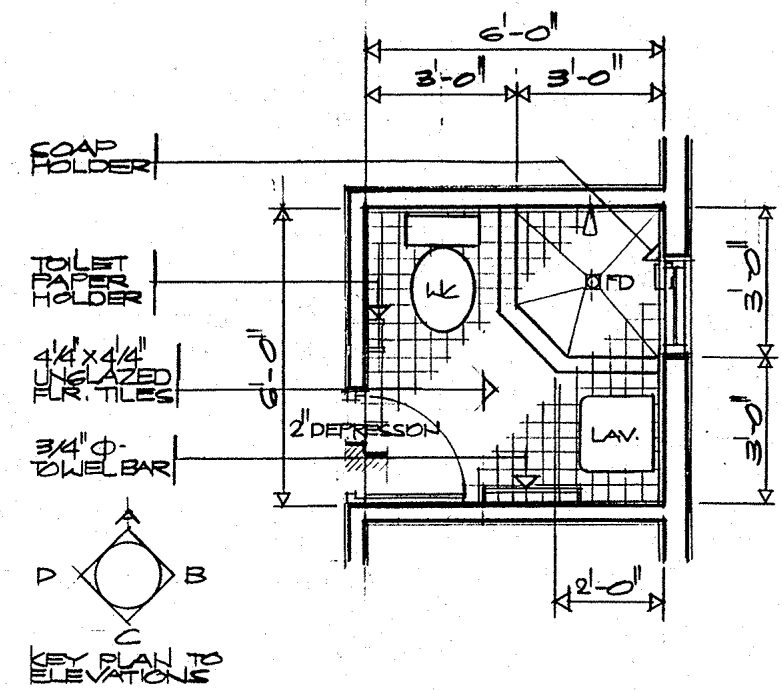


2 SECOND FLOOR REFLECTED CEILING PLAN
SCALE 1/4" = 1'-0"

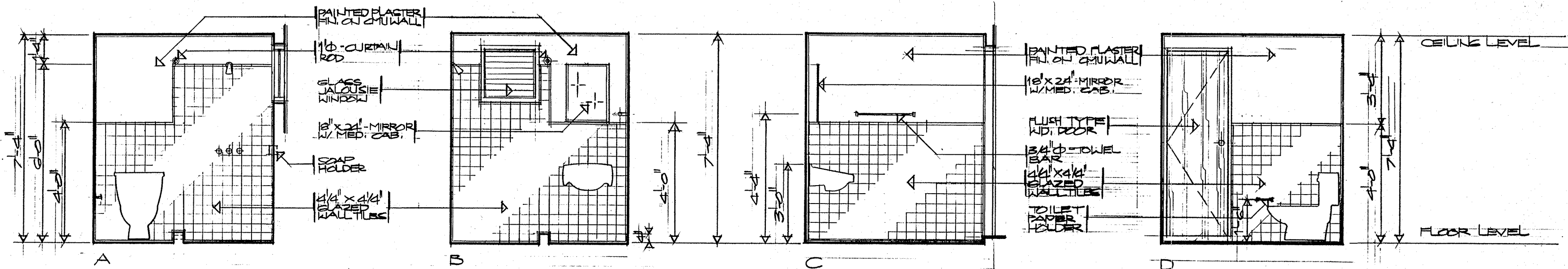
INDEX TO CEILING FINISHES

- C-1 1/2 THK. GYPSUM BOARD CEILING NAILED ON 2"x2" HARDWOOD JOIST PAINTED FINISH.
- C-2 1/2 THK. WATERPROOF GYPSUM BOARD CEILING NAILED ON 2"x2" HARDWOOD JOIST PAINTED FINISH.
- C-3 EXPOSED BEAM SCOFFIT OR SLAB SCOFFIT PAINTED FINISH.
- C-4 EXPOSED STRUCTURAL FRAMES PAINTED FINISH.

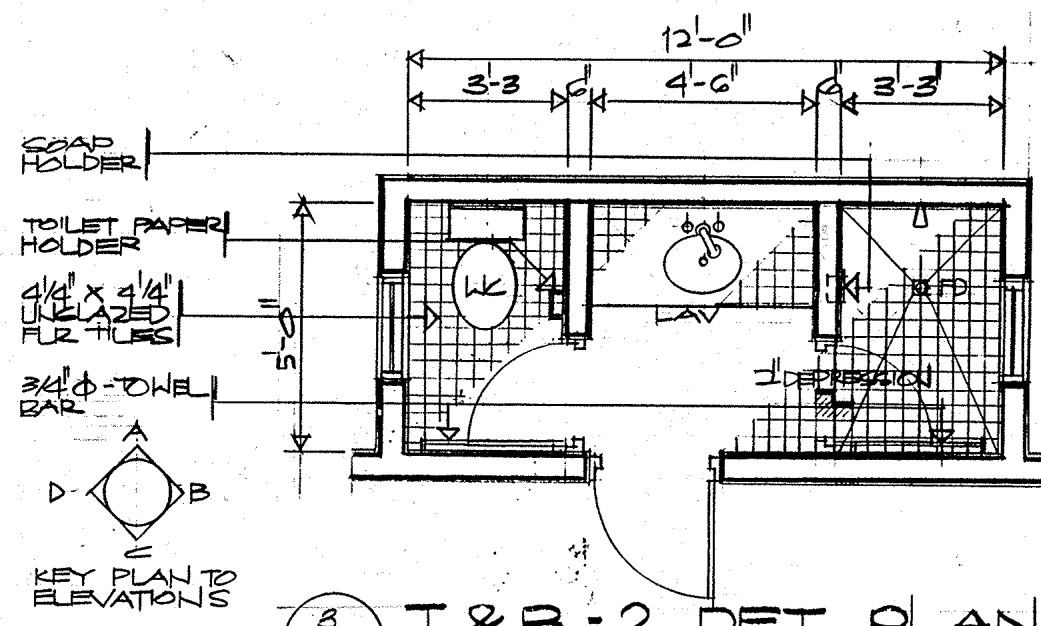
REVISION	DATE	BY	DESCRIPTION	APPROVED
PROJECT NO. PTA 01-047			GUAM PRESERVATION TRUST P.O. BOX 3036 AGANA, GUAM 96910 TEL: 649-1221 FAX: 649-1155 GUAM	
CONTRACT NO.				
DESIGNED BY: ERC			HISTORIC RESTORATION PEDRO ASANOMA HOUSE GROUND & SECOND FLOOR REFLECTED CEILING PLANS, AND TYPICAL CEILING DETAILS RECOMMENDED APPROVAL DATE:	
DRAWN BY: CVA				
CHECKED BY: ERC				
			GUAM PRESERVATION TRUST DATE:	
			ERC ASSOCIATES ARCHITECTS - PLANNERS - ENGINEERS DRAWER NO. DATE: DRAWING NUMBER A-4 SHEET 5 OF 12	



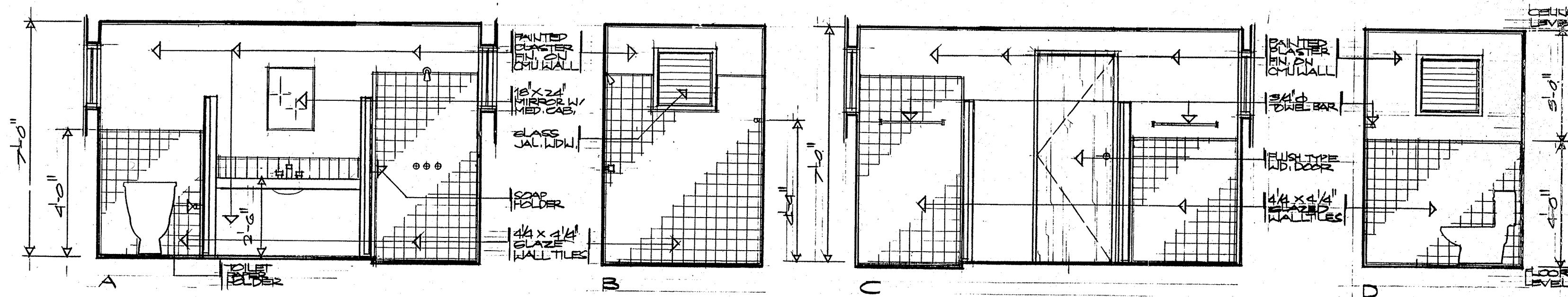
1 TYP T & B-1 DET. PLAN
SCALE 3/4"=1'-0"
A-5



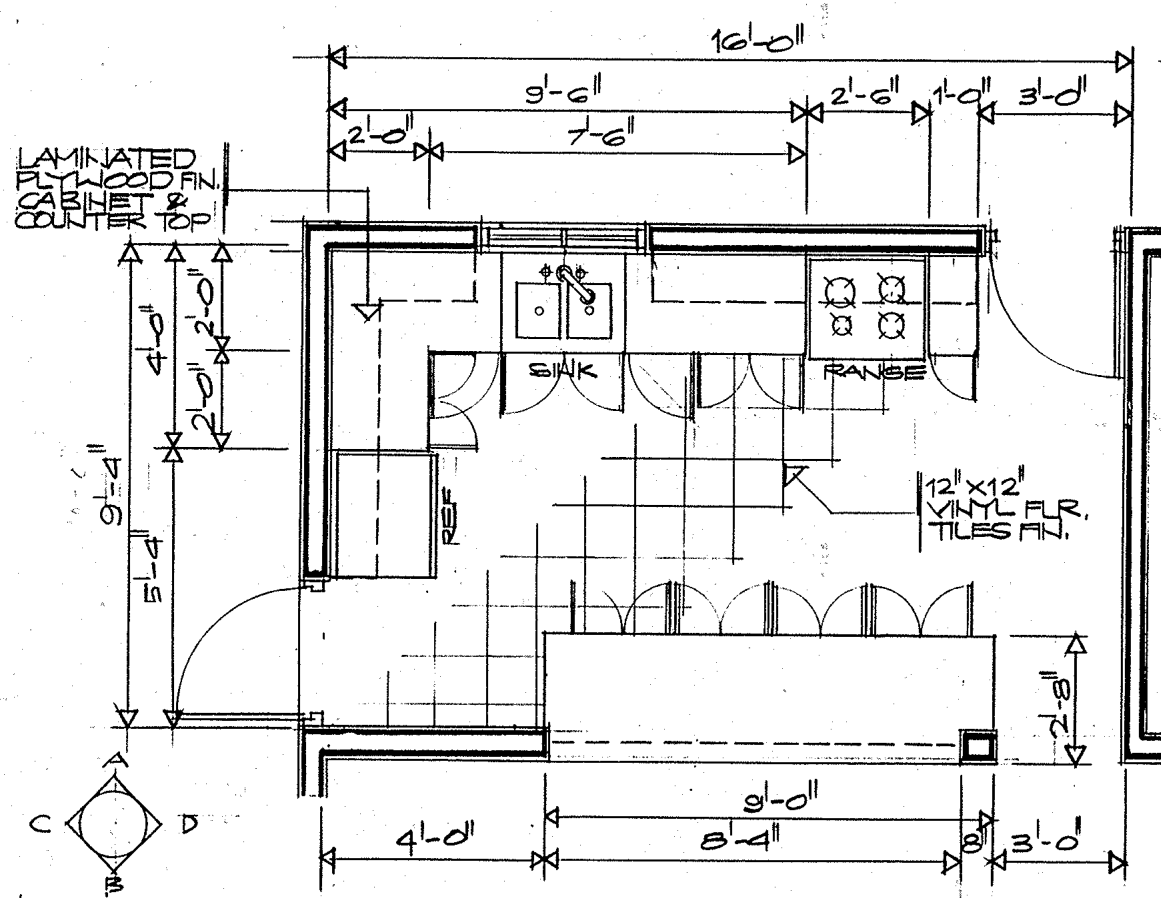
2 INTERIOR ELEVATIONS
SCALE 1/2"=1'-0"
A-5



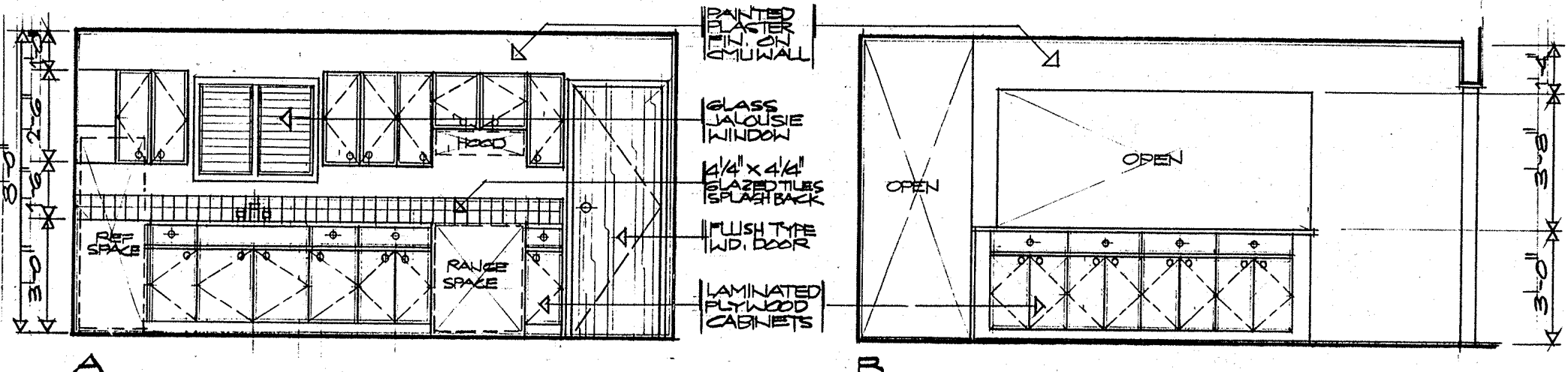
3 T & B-2 DET. PLAN
SCALE 3/4"=1'-0"
A-5



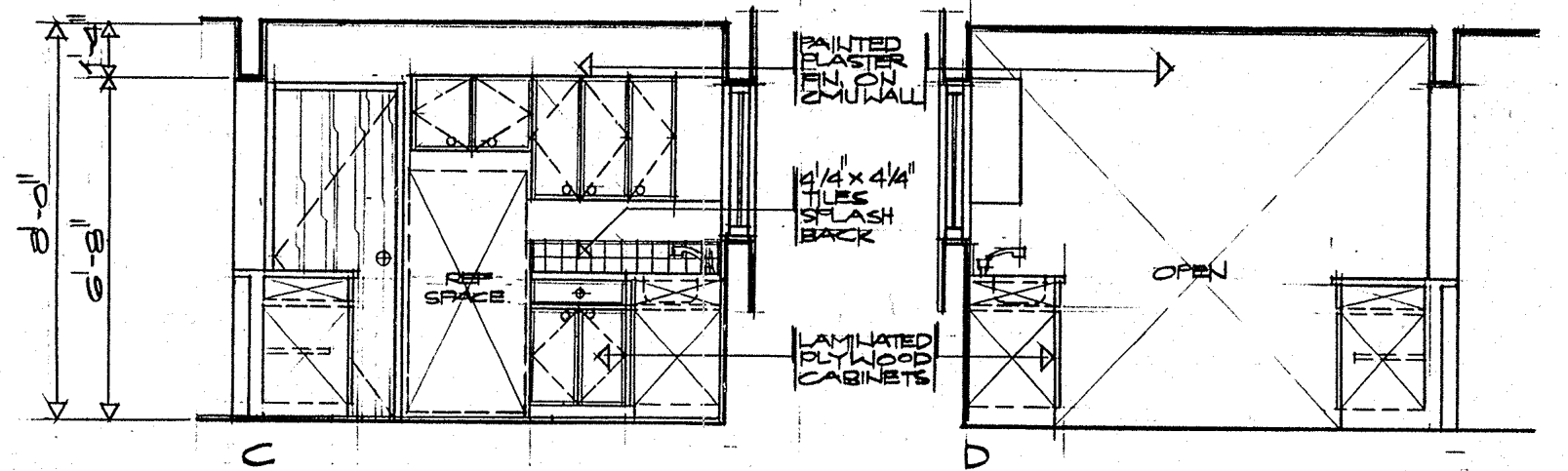
4 INTERIOR ELEVATIONS
SCALE 1/2"=1'-0"
A-5



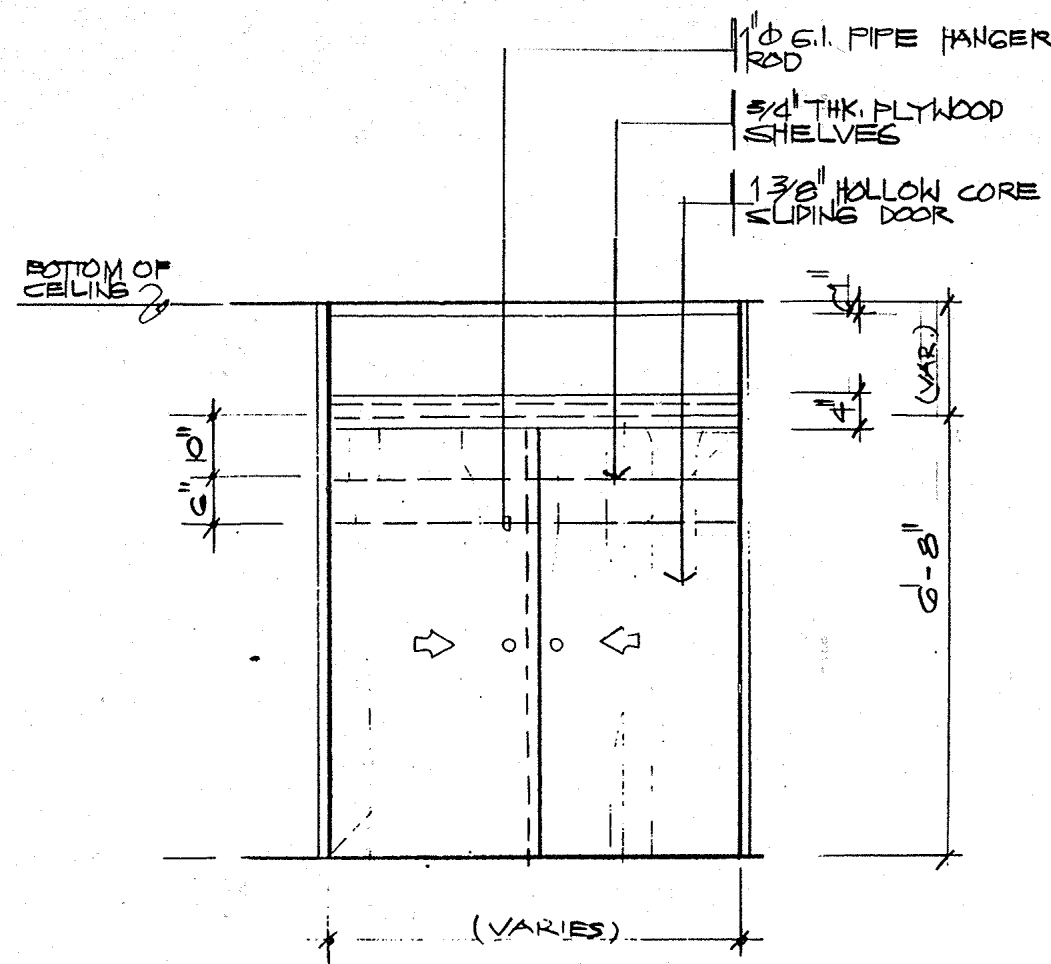
5 TYP KITCHEN DET. PLAN
SCALE 3/8"=1'-0"
A-5



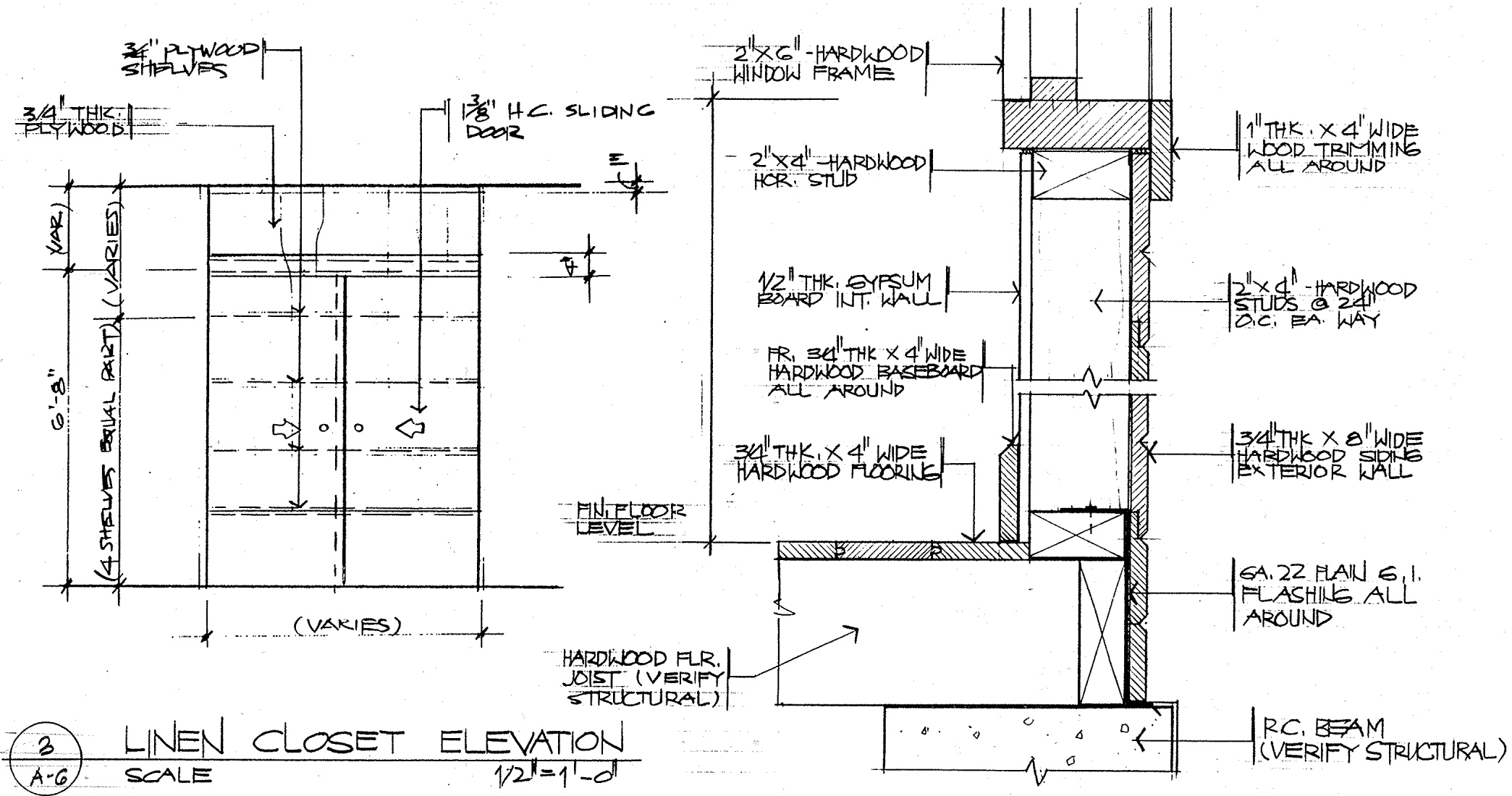
6 INTERIOR ELEVATION
SCALE 3/8"=1'-0"
A-5



DESIGNER	DATE	BY	DESCRIPTION	APPROVED
PROJECT NO.	PTA 91-047		GUAM PRESERVATION TRUST P.O. BOX 3036 AGANA, GUAM 96910	TEL: 649-1221 FAX: 649-1555
CONTRACT NO.			INARAJAN, VILLAGE	GUAM
DESIGNED BY:	ERC		HISTORIC RESTORATION	
DRAWN BY:	CVA		PEDRO ASANOMA HOUSE	
CHECKED BY:	ERC		PILET KITCHEN PARTIAL PLANS AND INTERIOR ELEVATIONS	
RECOMMENDED APPROVAL			DATE:	
GUAM PRESERVATION TRUST			DATE:	
ERC ASSOCIATES ARCHITECTS - PLANNERS - ENGINEERS			DRAWER NO:	
			DRAWING NUMBER:	A-5
			SHEET:	6 OF 12

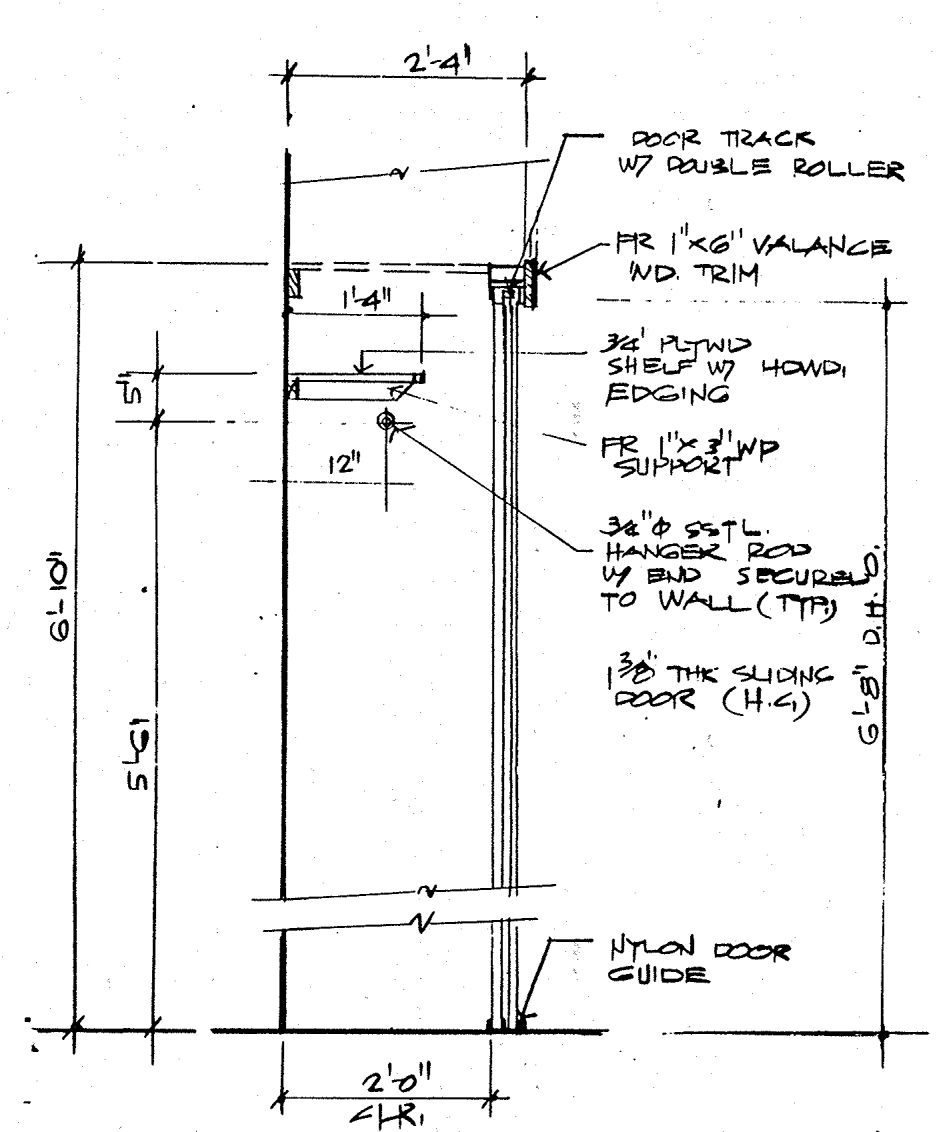


1 BEDROOM CLOSET ELEVATION
 A-G SCALE 1/2" = 1'-0"

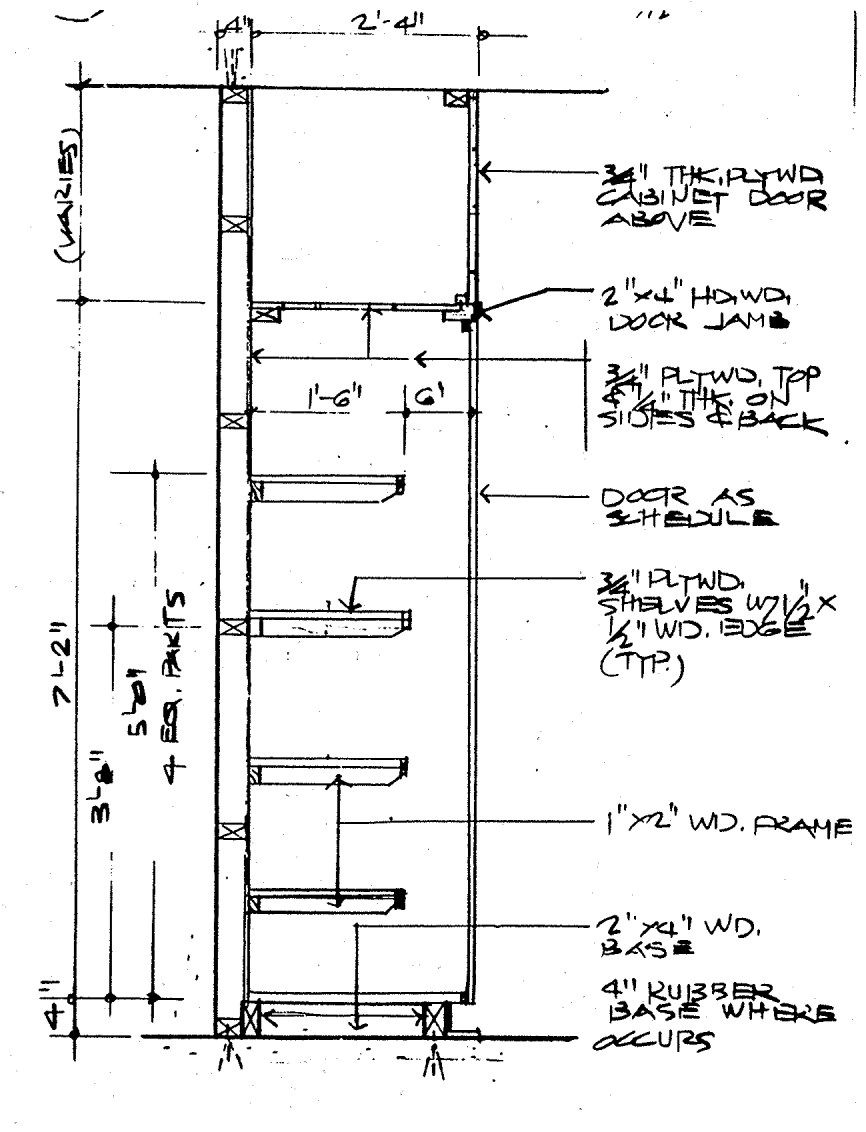


3 LINEN CLOSET ELEVATION
 A-G SCALE 1/2" = 1'-0"

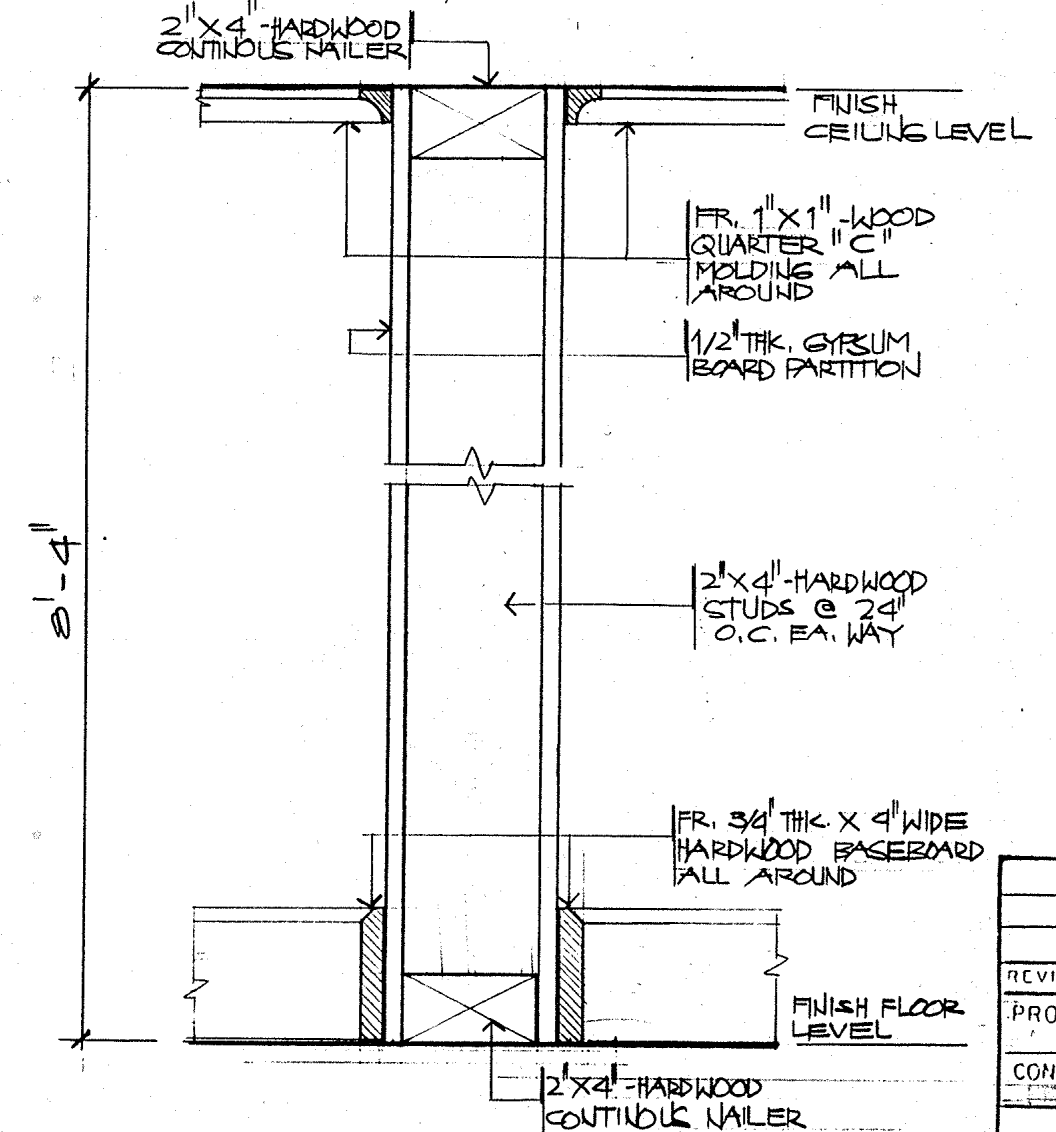
5 TYP. EXTERIOR WALL DET
 A-G SCALE 3/8" = 1'-0"



2 BEDROOM CLOSET SECTION
 A-G SCALE 3/4" = 1'-0"

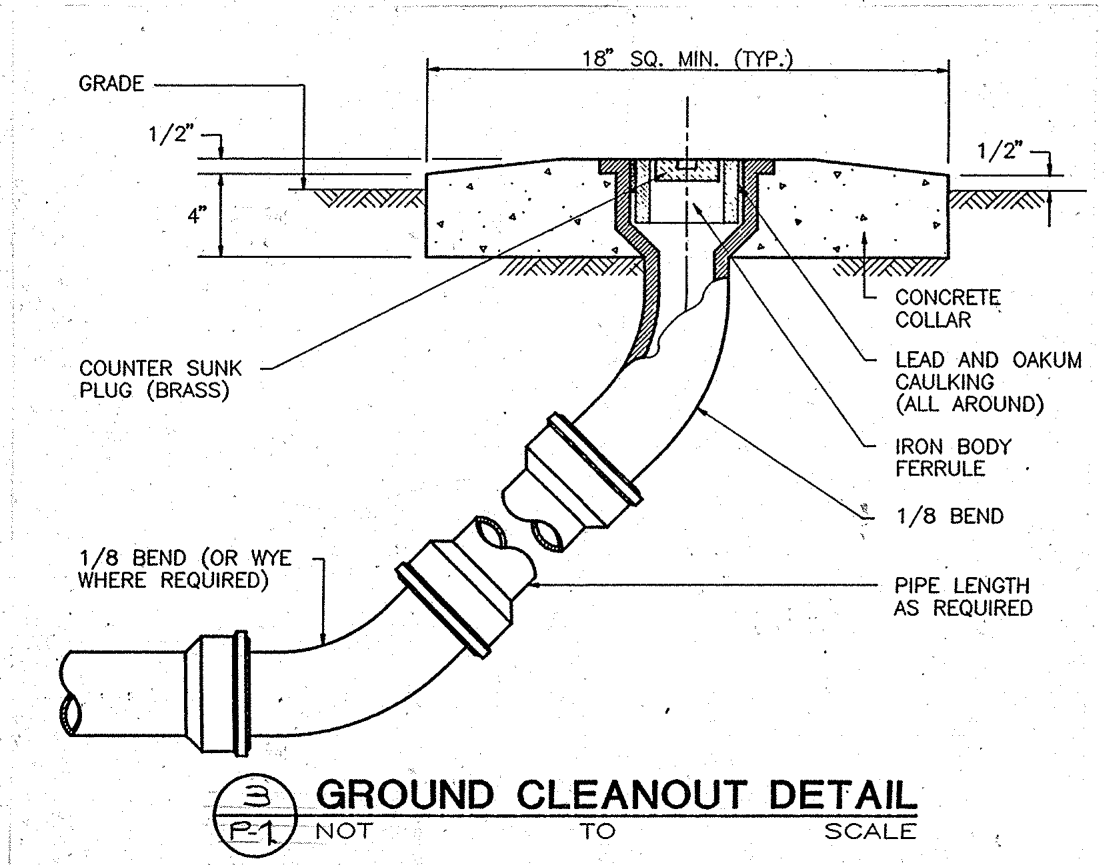


4 LINEN CLOSET SECTION
 A-G SCALE 3/4" = 1'-0"

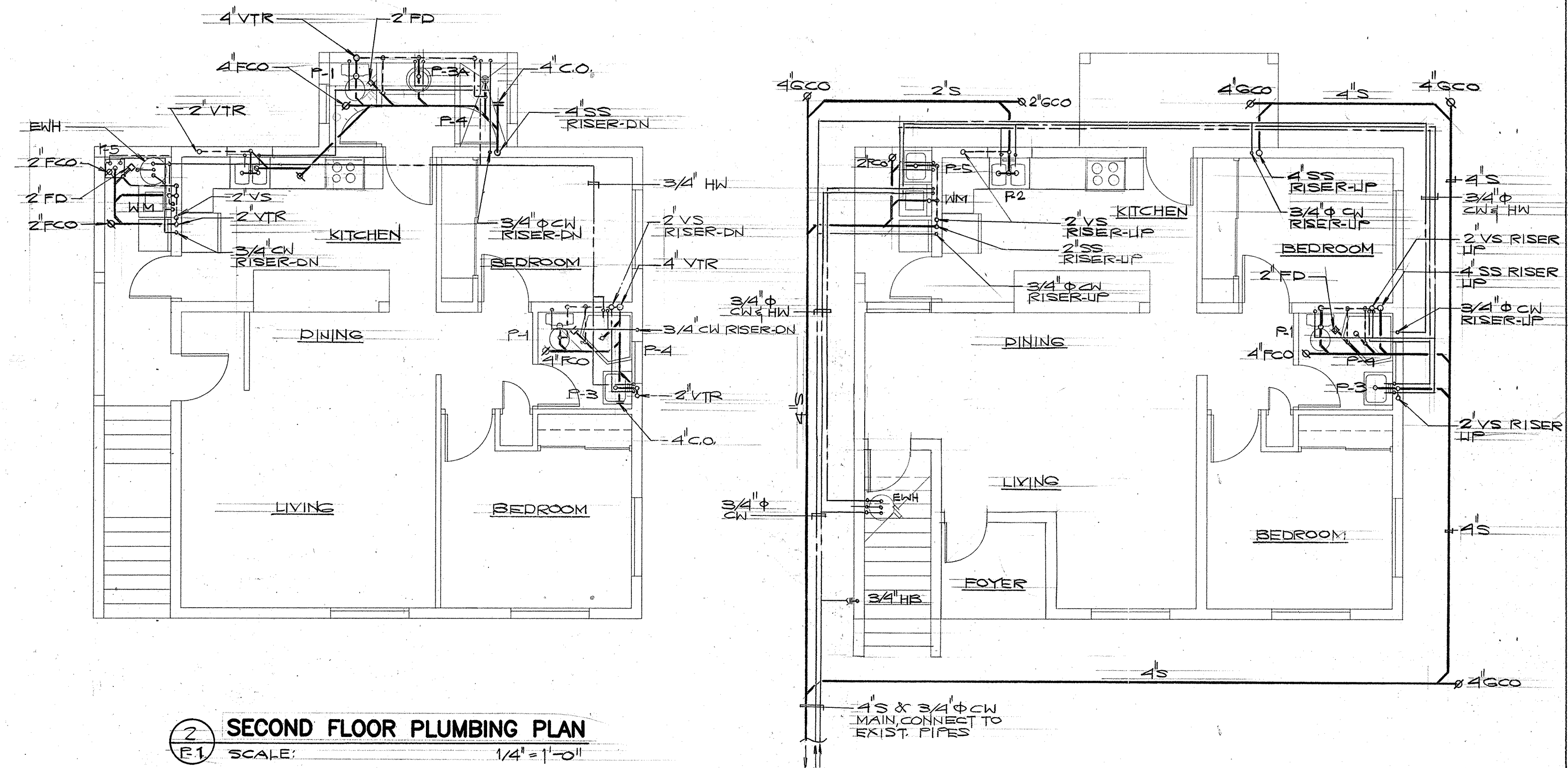


6 TYP. INTERIOR PARTITION DET.
 A-G SCALE 3/8" = 1'-0"

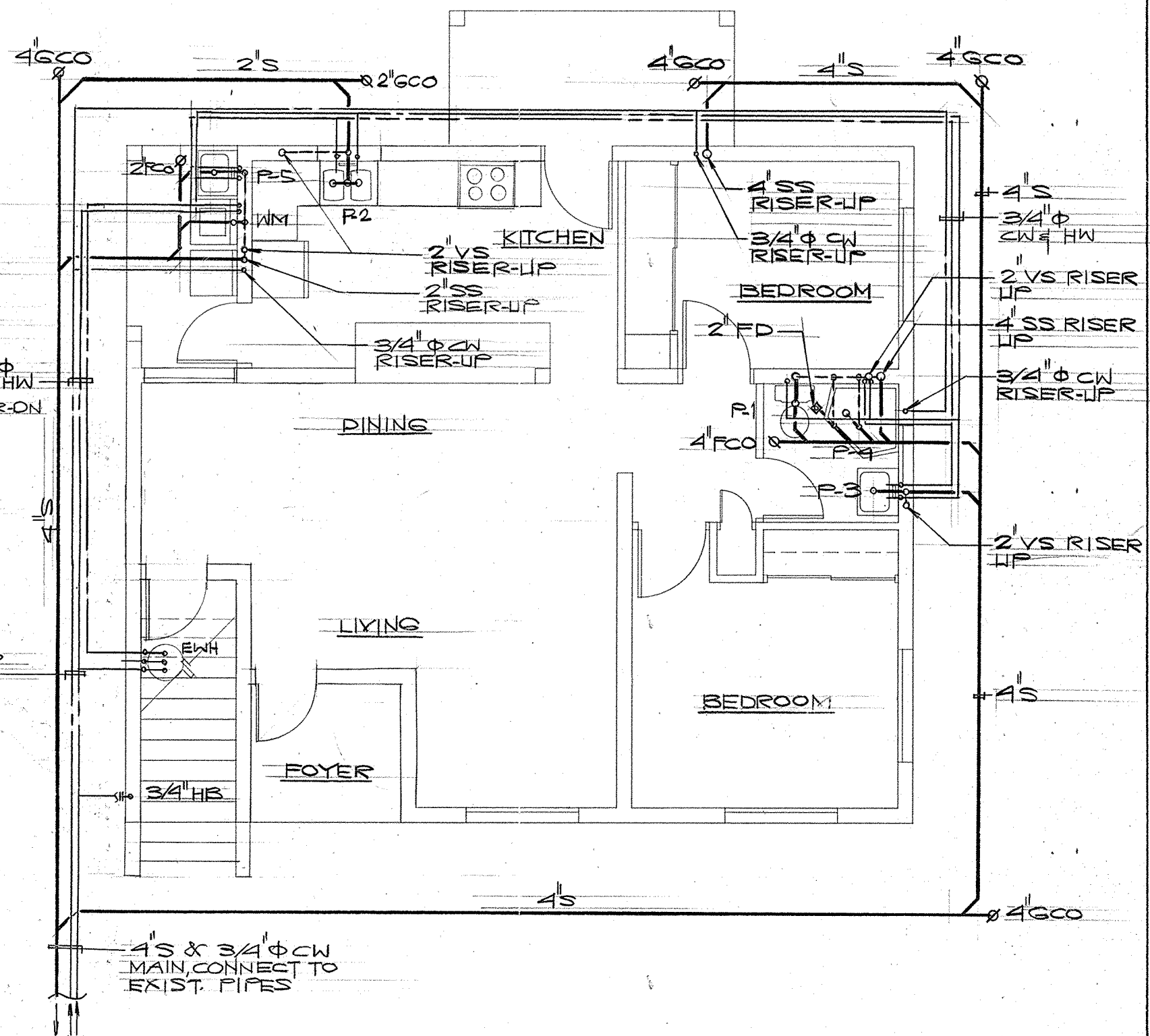
REVISION	DATE	BY	DESCRIPTION	APPROVED
PROJECT NO.			GUAM PRESERVATION TRUST P.O. BOX 3036 AGANA, GUAM 96910 TEL: 649-1221 FAX: 649-1155	
CONTRACT NO.			INARAJAN VILLAGE HISTORIC RESTORATION PEDRO ASANOMA HOUSE GUAM	
DESIGNED BY: ERC			MISCELLANEOUS DETAILS RECOMMENDED APPROVAL DATE:	
DRAWN BY: CVA			GUAM PRESERVATION TRUST DATE:	
CHECKED BY: ERC			DRAWER NO. DRAWING NUMBER A-6 SHEET 7 OF 12	



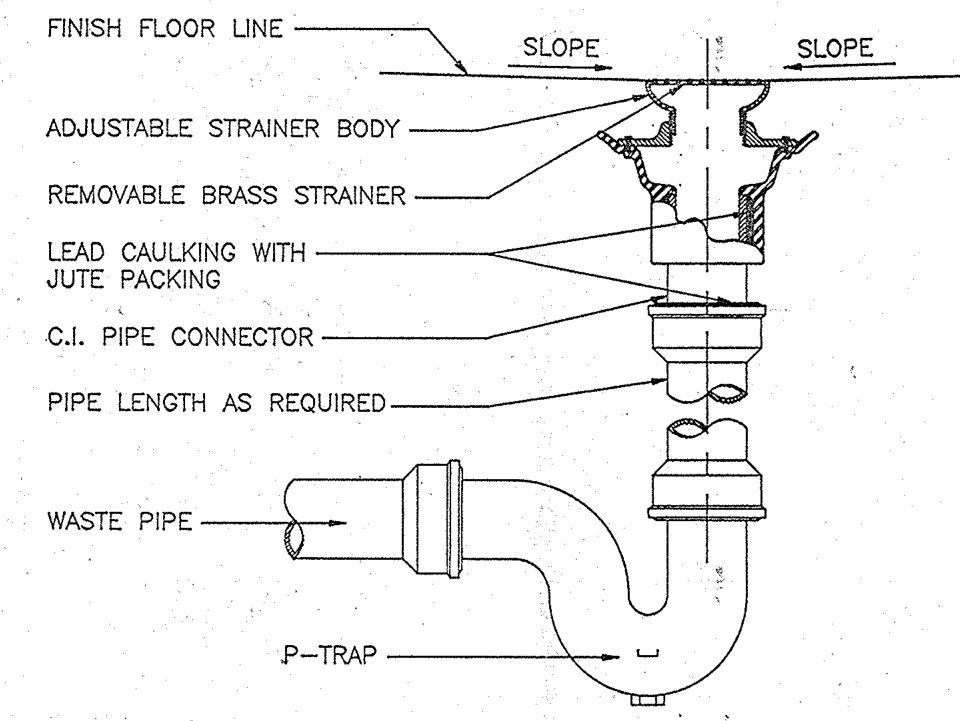
3 GROUND CLEANOUT DETAIL
P-1 NOT TO SCALE



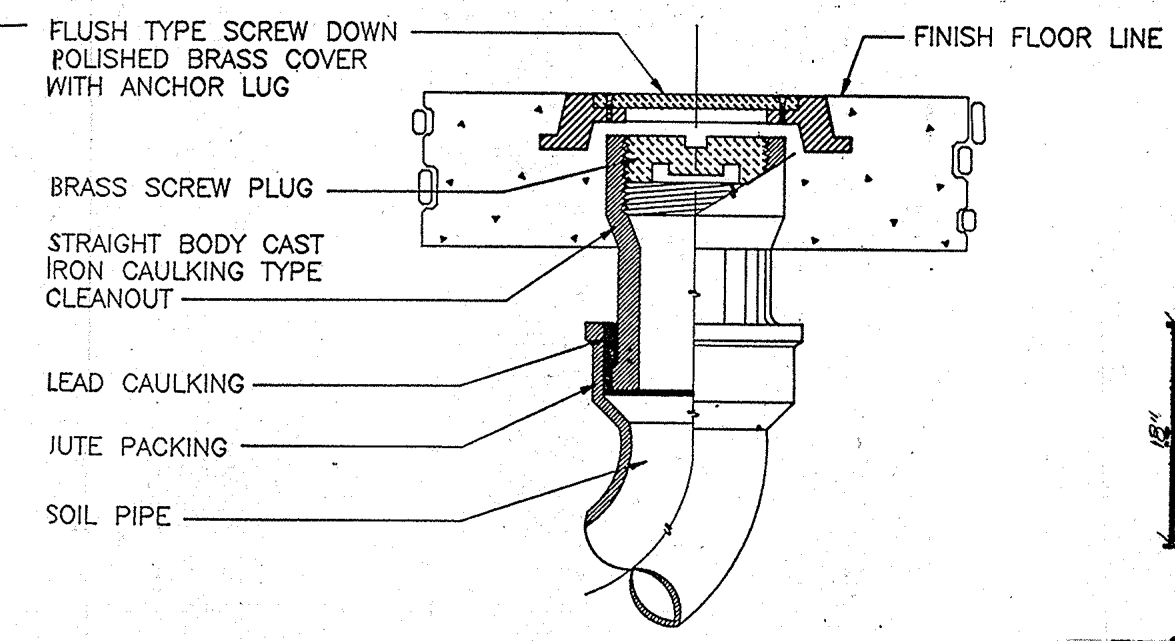
2 SECOND FLOOR PLUMBING PLAN
P-1 SCALE: 1/4" = 1'-0"



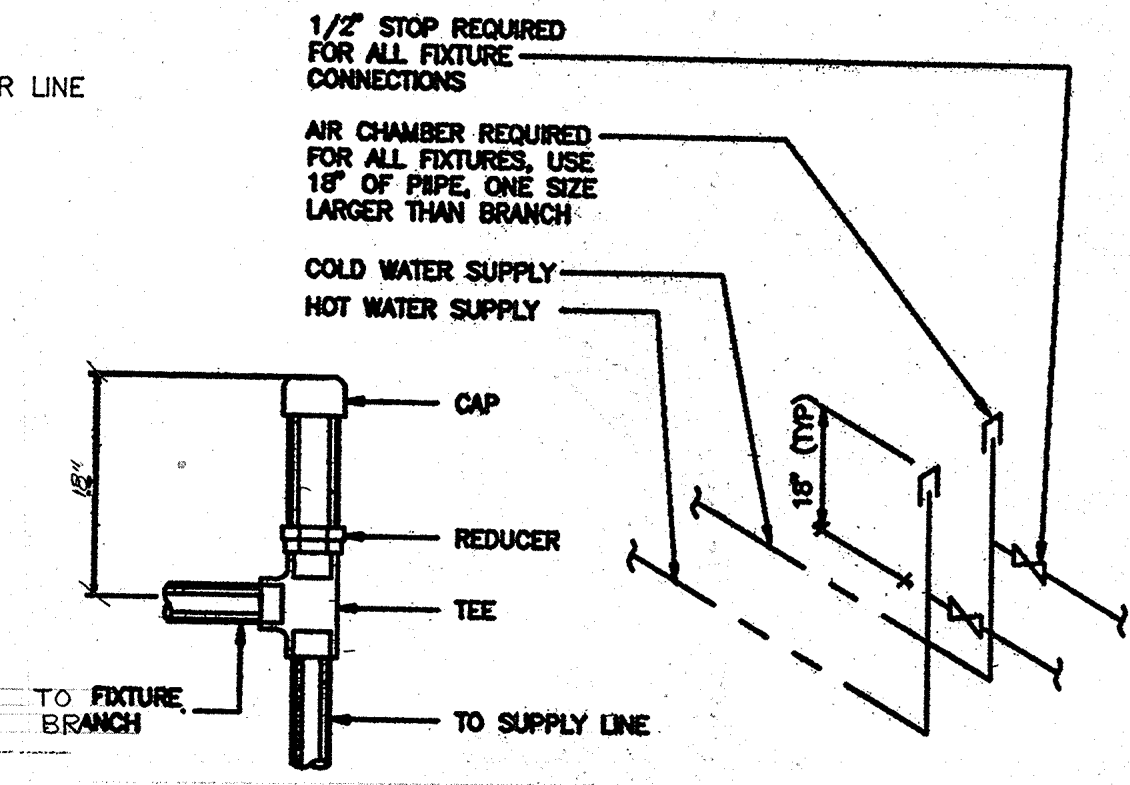
1 GROUND FLOOR PLUMBING PLAN
P-1 SCALE: 1/4" = 1'-0"



4 FLOOR DRAIN DETAIL
P-1 NTS

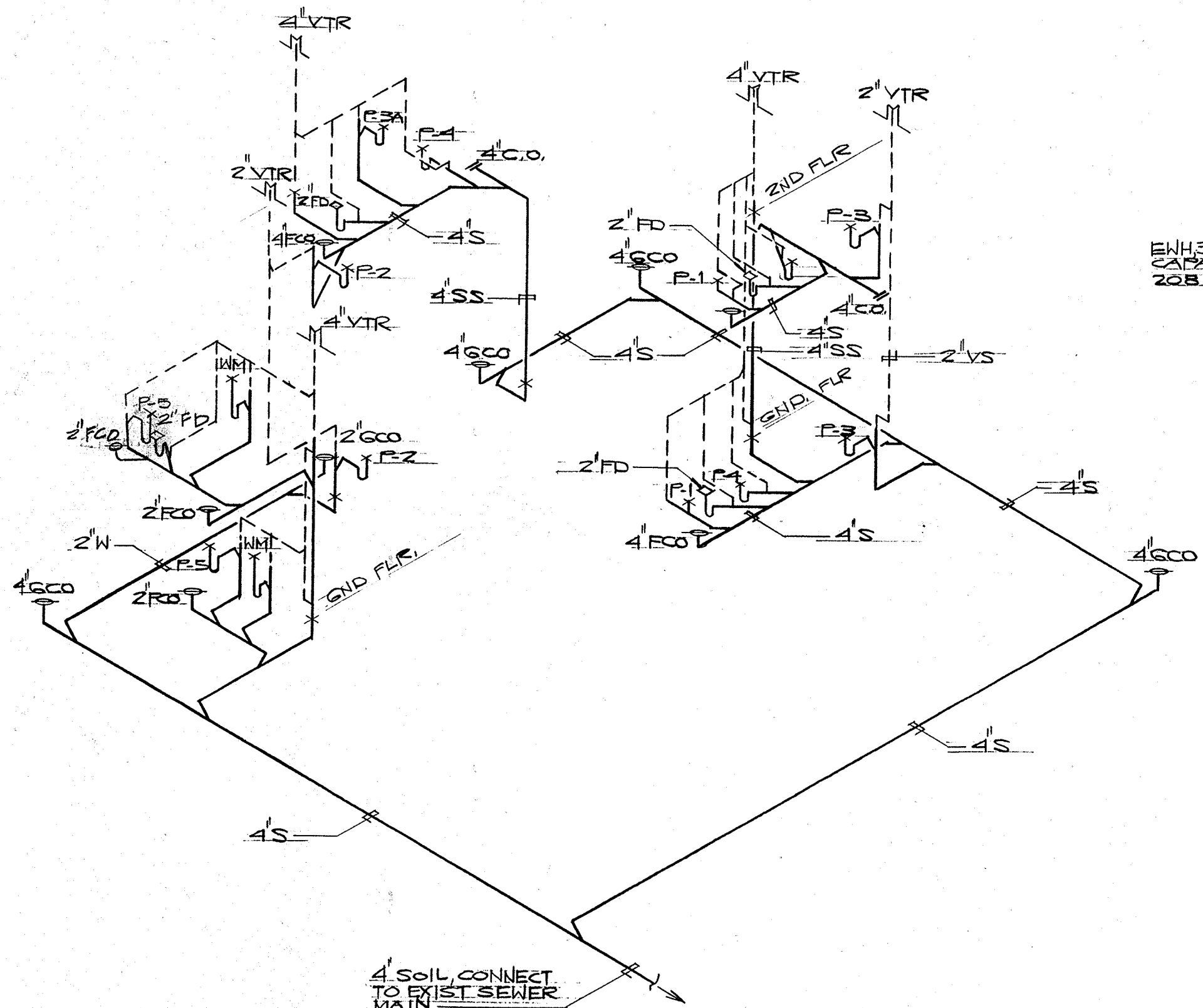


5 FLOOR CLEANOUT DETAIL
P-1 NTS

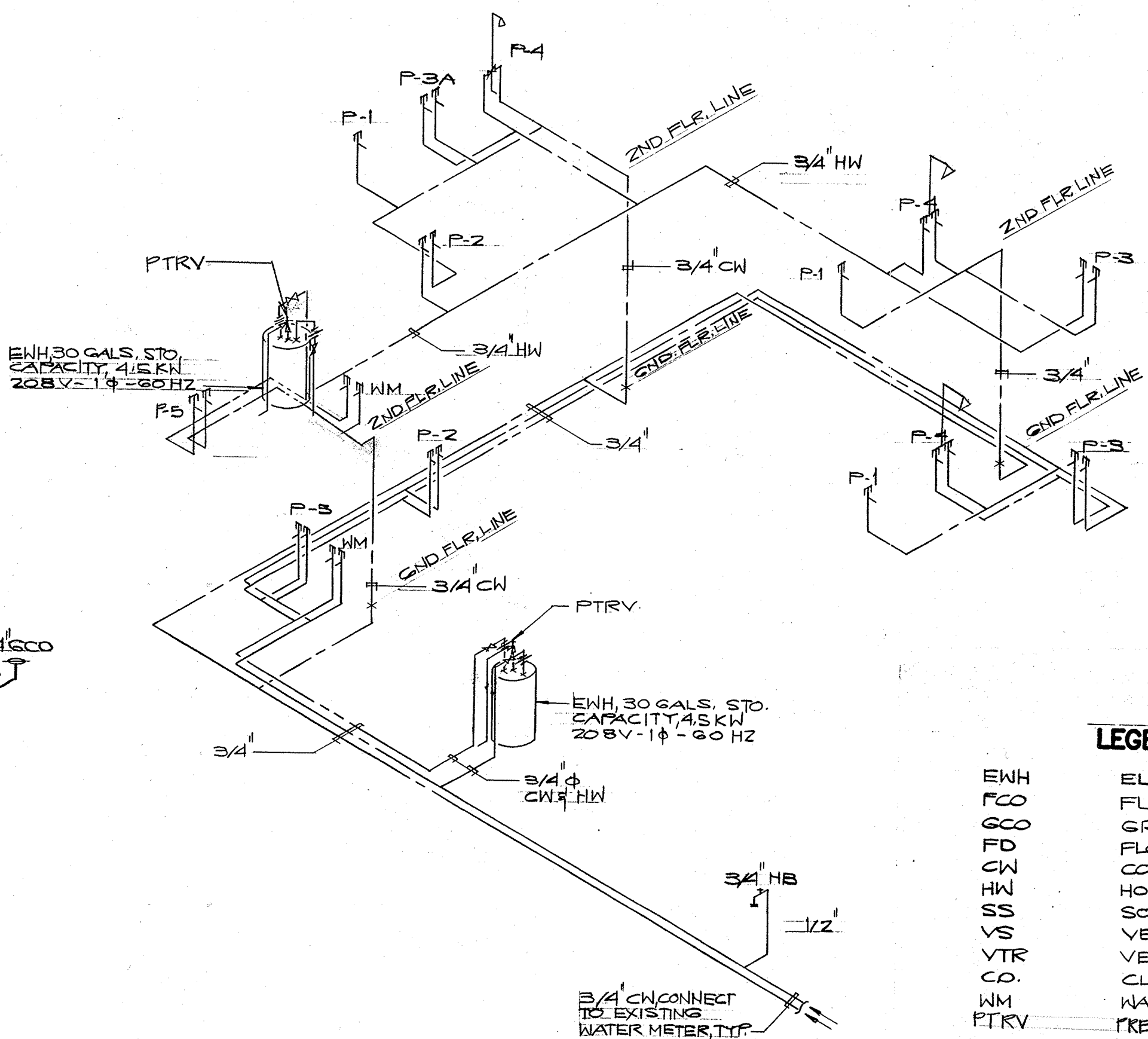


6 AIR CHAMBER DETAIL
P-1 NTS

REVISION	DATE	BY	DESCRIPTION	APPROVED
PROJECT NO.	PTA 91-047			
CONTRACT NO.				
DESIGNED BY:	ERC			
DRAWN BY:	CVA			
CHECKED BY:	ERC			
GUAM PRESERVATION TRUST P.O. BOX 30336 AGANA, GUAM 96910 TEL: 649-1221 FAX: 649-1155 INARAJAN VILLAGE HISTORIC RESTORATION PEDRO ASANOMA HOUSE PLUMBING PLAN (GROUND & SECOND FLOOR), PLUMBING DETAILS RECOMMENDED APPROVAL DATE:				
GUAM PRESERVATION TRUST ERC ASSOCIATES <small>INCORPORATED IN GUAM</small> ARCHITECTS - PLANNERS - ENGINEERS				DATE: DRAWER NO: DRAWING NUMBER: P-1 SHEET 0 OF 12



1 S, W AND VENT PIPING ISOMETRIC
P-2 NTS



2 CW AND HW PIPING ISOMETRIC
P-2 NTS

LEGEND

- EWL ELECTRIC WATER HEATER
- FCO FLOOR CLEANOUT
- GCO GROUND CLEANOUT
- FD FLOOR DRAIN
- CW COLD WATER
- HW HOT WATER
- SS SOIL STACK
- VS VENT STACK
- VTR VENT THRU ROOF CLEANOUT
- WM WASHING MACHINE
- PTRV PRESSURE TEMP RELIEF VALVE

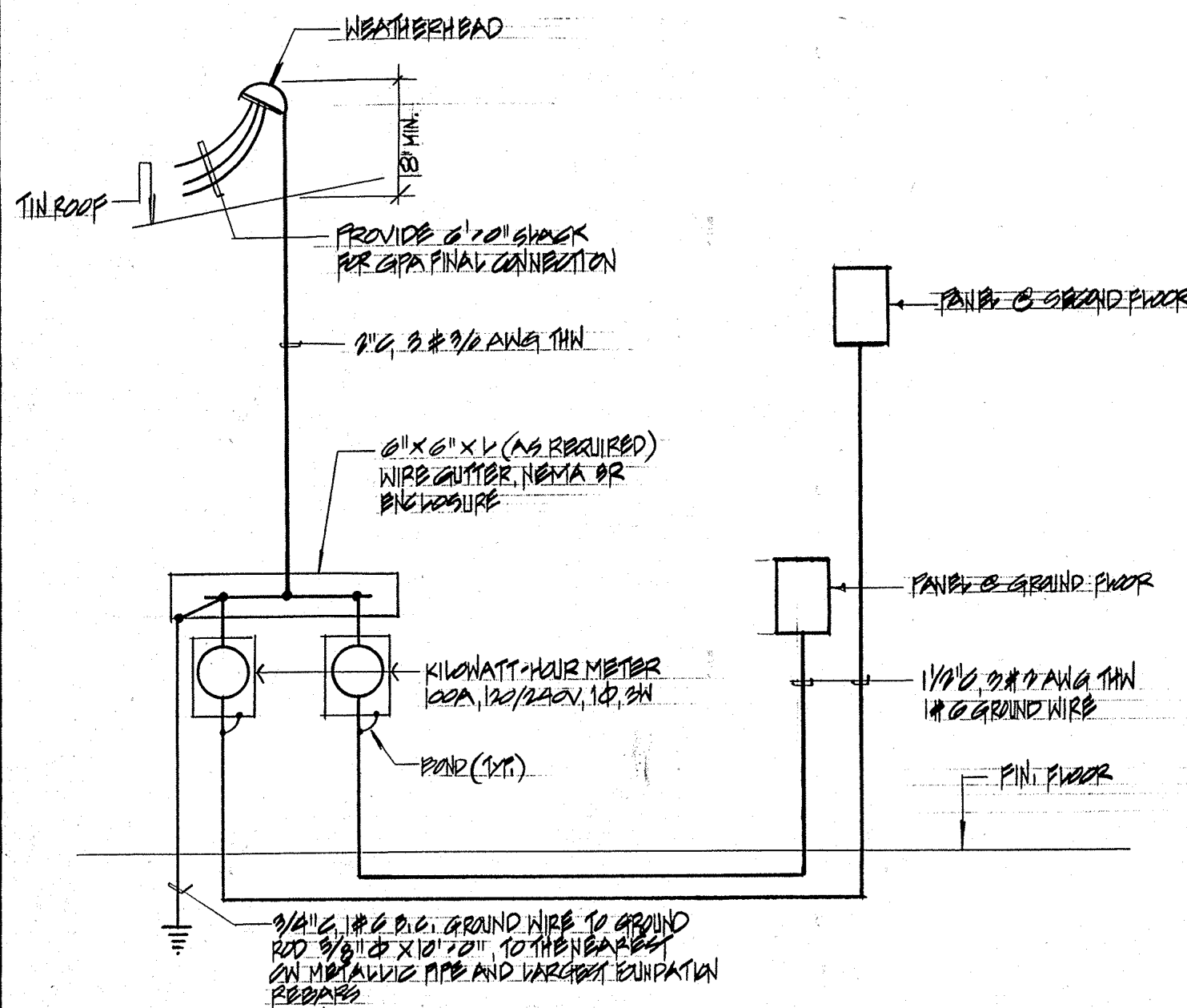
PLUMBING FIXTURE SCHEDULE

MARK	FIXTURE	PIPE SIZE CONNECTION				REMARKS
		CW	HW	WASTE	VENT	
P-1	WATER CLOSET	1/2"	-	4"	2"	FLUSH TANK
P-2	KITCHEN SINK	1/2"	1/2"	2"	2"	COUNTER TOP
P-3	LAVATORY	1/2"	1/2"	2"	2"	WALL HUNG
P-3A	LAVATORY	1/2"	1/2"	2"	2"	
P-4	SHOWER	1/2"	1/2"	2"	2"	
P-5	LAUNDRY TUB	1/2"	1/2"	2"	2"	
WM	WASHING MACHINE	1/2"	1/2"	2"	2"	
FD	FLOOR DRAIN	-	-	2"	2"	
HB	HOSE BIBB	1/2"	-	-	-	
EWH	ELECTRIC WATER HEATER	3/4"	3/4"	-	3/4"	30 GAL. CAPACITY

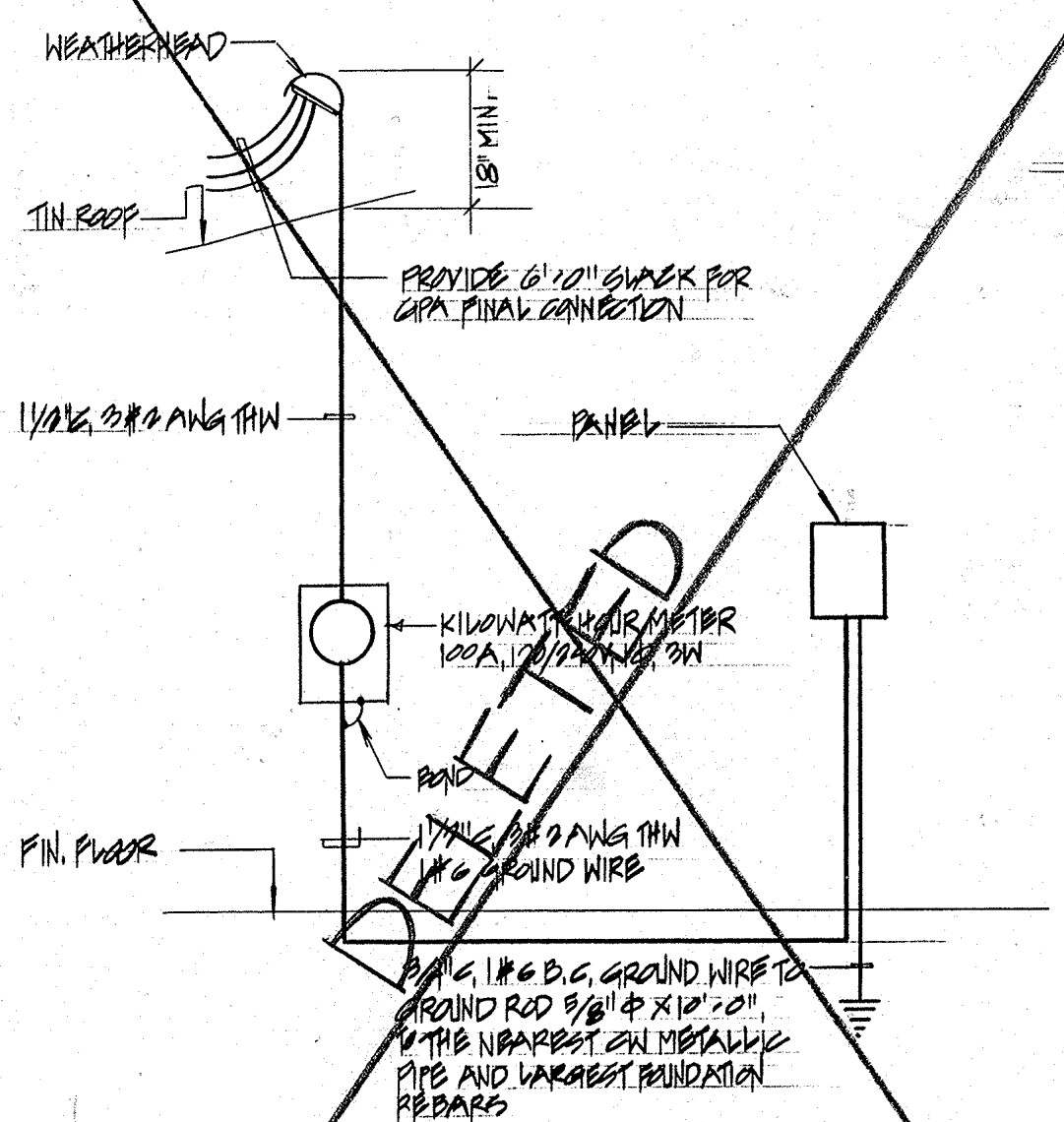
PLUMBING NOTES

- ALL WORK SHALL BE IN ACCORDANCE WITH GOVERNMENT LAWS AND ORDINANCES, RULES AND REGULATIONS AND ORDERS PLUMBING WORK SHALL CONFORM WITH THE UNIFORM PLUMBING CODE.
- CONTRACTOR SHALL OBTAIN AND PAY FOR GOVERNMENT PERMITS REQUIRED AND ARRANGE FOR PERIODIC AND FINAL INSPECTION BY GOVERNMENT AUTHORITIES.
- CONTRACTOR SHALL SUBMIT TO THE ARCHITECT 4 SETS OF AS-BUILTS AFTER CONCLUSION OF WORK.
- MECHANICAL CONTRACTOR SHALL COORDINATE HIS PROPOSED SCHEDULE WITH THAT OF THE GENERAL CONTRACTOR TO ENSURE THAT ALL TRADES ARE ALL IN PROPER PHASING WITH THE OVERALL CONSTRUCTION PROGRESS.
- ALL EQUIPMENT AND MATERIALS SHALL BE NEW, IN PERFECT CONDITION, AND OF THE HIGHEST QUALITY. ALL EQUIPMENT AND MATERIALS WHERE POSSIBLE SHALL BE STANDARD PRODUCTS OF MANUFACTURERS REGULARLY ENGAGED IN THE PRODUCTION OF SUCH EQUIPMENT AND SHALL BE THE LATEST STANDARD DESIGN.
- EQUIPMENT CONFIGURATION, DIMENSIONS, PIPING CONNECTIONS VARY WITH DIFFERENT MANUFACTURERS AND MAY DIFFER FROM THAT SHOWN ON THE DRAWINGS. CONTRACTOR SHALL MAKE DEVIATIONS TO SUIT ACTUAL EQUIPMENT TO BE USED AND TO ENSURE PROPER FIT AND OPERATION OF THE SYSTEM, SUCH DEVIATIONS SHALL BE SUBJECT TO THE ARCHITECT/ENGINEER'S APPROVAL AND WHEN APPROVED SHALL BE DONE BY THE CONTRACTOR AT NO ADDITIONAL COST.
- IT IS THE INTENTION OF THESE PLANS TO PROVIDE A WORKING INSTALLATION IN EVERY DETAIL AND ALL ITEMS REQUIRED FOR SUCH AN INSTALLATION SHALL BE FURNISHED WHETHER OR NOT PARTICULARLY SHOWN OR MENTIONED.
- PROVIDE MINIMUM 2% SLOPE ON HORIZONTAL SOIL WASTE AND VENT LINES.
- PROVIDE 12" LONG AIR CHAMBERS ON WATER SUPPLIES TO FIXTURES, ONE PIPE SIZE LARGER THAN THE SUPPLY PIPE.
- PROVIDE PIPE SLEEVES FOR PIPES PASSING THRU WALLS AND FOUNDATIONS.

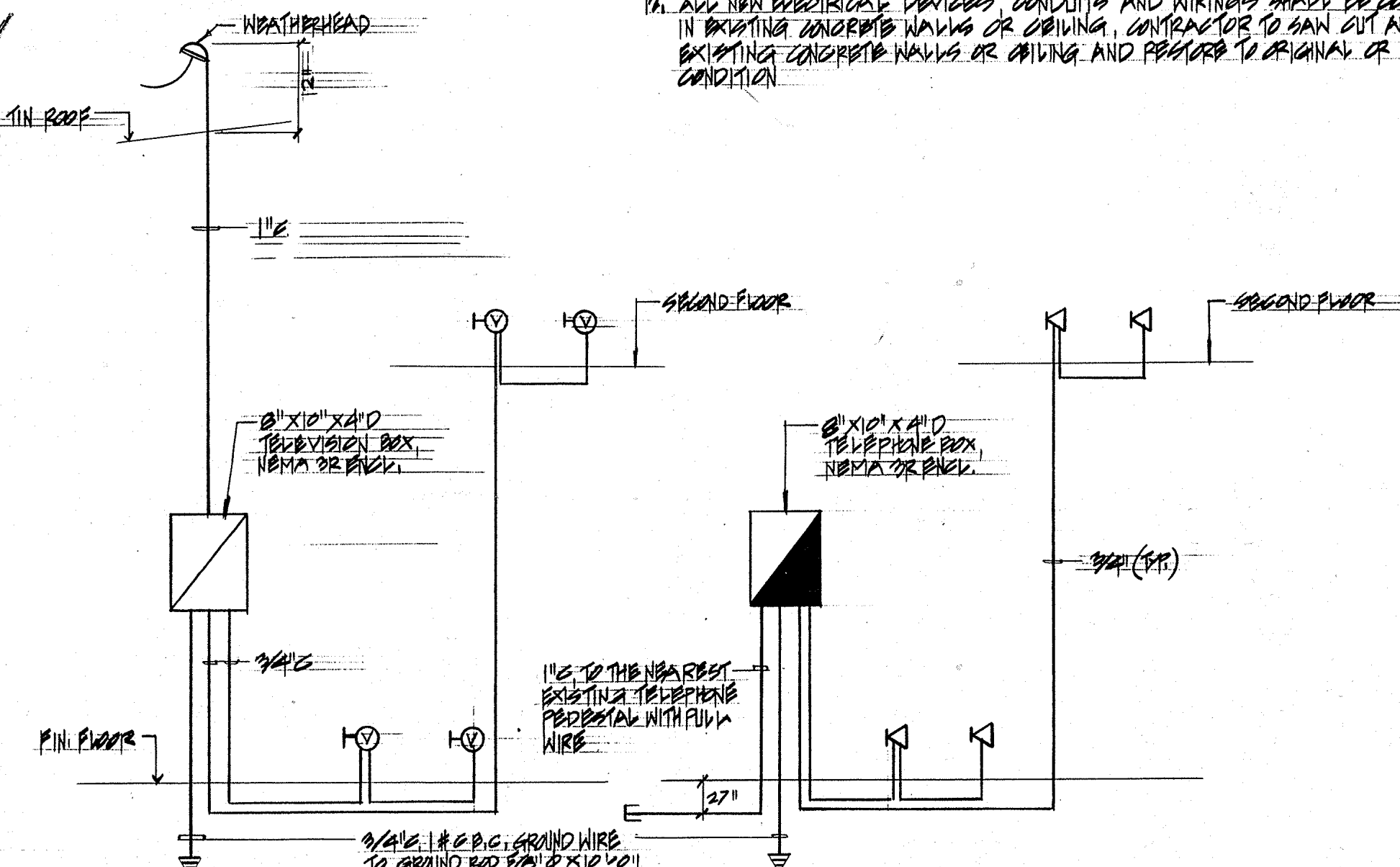
REVISION	DATE	BY	DESCRIPTION	APPROVED
PROJECT NO. PTA 91-047				
CONTRACT NO.				
DESIGNED BY: ERC			GUAM PRESERVATION TRUST P.O. BOX 3036 AGANA, GUAM 96910 TEL: 649-1221 FAX: 649-1155 INARAJAN VILLAGE GUAM	
DRAWN BY: CA			HISTORIC RESTORATION PEDRO ASANOMA HOUSE PIPING ISOMETRIC, PLUMBING FIXTURE SCHEDULE, NOTES	
CHECKED BY: ERC			RECOMMENDED APPROVAL DATE:	
			GUAM PRESERVATION TRUST DATE:	
ERC ASSOCIATES P.A. 200-19 GUAM 96910 TEL: 649-5450 FAX: 649-1097 ARCHITECTS - PLANNERS - ENGINEERS			DRAWER NO: P-2	
			DRAWING NUMBER: P-2	
			SHEET 10 OF 12	



1 TYP? ONE LINE DIAGRAM
E-1 NTS



ONE LINE DIAGRAMS
E-1 NTS



2 TYP? TV DIAGRAM
E-1 NTS

3 TYP? TEL. DIAGRAM
E-1 NTS

GENERAL NOTES

1. ALL ELECTRICAL WORK SHALL BE IN ACCORDANCE WITH THE APPLICABLE SECTIONS OF THE NATIONAL ELECTRICAL CODE (NEC) 1990, AND RULES AND REGULATIONS OF THE DEPARTMENT OF PUBLIC WORKS, GOVERNMENT OF GUAM AND GUAM POWER AUTHORITY
2. ALL EQUIPMENT AND MATERIALS SHALL BE LISTED WHERE LISTING IS AVAILABLE FOR THAT TYPE OF EQUIPMENT OR CONFORM TO ANSI OR NEMA STANDARDS
3. WORKMANSHIP SHALL CONFORM TO CONSTRUCTION PRACTICES RECOMMENDED BY THE AMERICAN ELECTRICIANS HANDBOOK BY CREST (LATEST EDITIONS) AND SHALL BE SUBJECT TO THE APPROVAL OF THE AGENCY WHO HAS JURISDICTION AND THE ENGINEER
4. METALLIC ENCLOSURES, RACEWAYS AND ELECTRICAL EQUIPMENT SHALL BE GROUNDED IN ACCORDANCE WITH REQUIREMENTS OF NEC ARTICLE 250. PROVIDE GROUND WIRE IN EVERY RACEWAY, CABLE IN ACCORDANCE WITH NEC TABLE 250.140
5. CONDUIT SHALL BE EMT (DRY LOCATIONS CONCEALED ABOVE GRADE) ALUMINUM (EXPOSED INSTALLATION), FLEXIBLE CONDUIT SHALL BE JACKETED TYPE AND IN ACCORDANCE WITH NEC ARTICLE 300. PVC CONDUIT UNDER SLAB AND INSIDE CONCRETE
6. WIRING SHALL BE NEC TYPE THW, THWN OR XHHW, 600 V. CONDUCTORS SHALL BE COPPER
7. MINIMUM SIZE OF WIRE SHALL BE NO. 10 AWG AND MINIMUM SIZE OF CONDUIT SHALL BE 3/4\"/>
- 8. ELECTRICAL WORK SHALL BE UNDER THE FULL SUPERVISION OF A MASTER ELECTRICIAN OR PROFESSIONAL ELECTRICAL ENGINEER LICENSED TO PRACTICE IN GUAM
- 9. ALL ELECTRICAL DEVICES AND EQUIPMENT EXPOSED TO WEATHER SHALL BE WEATHERPROOF
- 10. PANELBOARD SHALL BE COMPLETE WITH BUS, ENCLOSURE AND TRIM, COMPLETE AND MOLDED CASE CIRCUIT BREAKER, WITH RATINGS AS INDICATED, AND PROVIDE TYPE CIRCUIT BREAKER
- 11. ALL EXISTING ELECTRICAL EQUIPMENT, DEVICES, CONDUITS AND WIRINGS SHALL BE REMOVED. CONTRACTOR SHALL VISIT SITE TO FAMILIARIZE HIMSELF OF THE REMOVAL WORKS PRIOR TO SUBMIT BID OR PROPOSAL
- 12. ALL NEW ELECTRICAL DEVICES, CONDUITS AND WIRINGS SHALL BE CONCEALED IN EXISTING CONCRETE WALLS OR CEILING, CONTRACTOR TO SAW CUT AND CHIP EXISTING CONCRETE WALLS OR CEILING AND RESTORE TO ORIGINAL OR BETTER CONDITION

SYMBOL LIST

○	FLUORESCENT LIGHT FIXTURE, CEILING, SURFACE MOUNTED, NUMBER DENOTES CIRCUIT NUMBER, SUBSCRIPT LETTER "A" DENOTES CONTROLLING SWITCH
○	INCANDESCENT LIGHT FIXTURE, CEILING, SURFACE MOUNTED
○	INCANDESCENT LIGHT FIXTURE, WALL, SURFACE MOUNTED
⊕	THIMBLER SWITCH, WALL, FLUSH MOUNTED, 1P, 15A, 125V
⊕	THREE WAY SWITCH, WALL, FLUSH MOUNTED
⊕	DIFFER RECEPTACLE, WALL, FLUSH MOUNTED, 1P, 15A, 125V, GROUNDING TYPE
⊕	SINGLE RECEPTACLE, WALL, FLUSH MOUNTED, 1P, 15A, 125V, GROUNDING TYPE
⊕	SINGLE RECEPTACLE, WALL, FLUSH MOUNTED, 2P, 30A, 125V, GROUNDING TYPE
⊕	SINGLE RECEPTACLE, WALL, FLUSH MOUNTED, 2P, 30A, 125V, GROUNDING TYPE
K	TELEPHONE OUTLET, WALL, FLUSH MOUNTED
T	TELEVISION OUTLET, WALL, FLUSH MOUNTED
⊕	PAN CONNECTION
⊕	DIAPHRAGM CONNECTION
⊕	WASTEWATER WATER HEATER CONNECTION
T	JUNCTION BOX, WALL, FLUSH MOUNTED
□	DISCONNECT SWITCH, HP RATED
□	TELEPHONE BOX, SURFACE MOUNTED
□	TELEVISION BOX, SURFACE MOUNTED
■	SUBSTITUTE PANELBOARD, FLUSH MOUNTED
—#—	CONDUIT, CONCEALED IN WALLS OR CEILING, HASHED MARKS DENOTE NUMBER OF WIRES WITHIN INCLUDING GROUND WIRE, NO HASHED MARK DENOTES THREE WIRES WITHIN INCLUDING GROUND WIRE
—•—	CONDUIT, UNDERGROUND OR UNDER SLAB
—T—	TELEPHONE CONDUIT, EMPTY WITH PULL WIRE
—V—	TELEVISION CONDUIT, EMPTY WITH PULL WIRE
—W—	FLEXIBLE CONDUIT, WEIGHT LIGHT
—J—	MEMBRAN TO PANEL, TELEVISION BOX OR TELEPHONE BOX
WP	INDICATES WEATHERPROOF
GFI	GROUND FAULT INTERRUPTER
⊕	LIGHT FIXTURE INDICATOR
⊕	SMOKE DETECTOR, CEILING MOUNTED, TRV, V, CONNECT TO UNWITTED CIRCUIT

REVISION	DATE	BY	DESCRIPTION	APPROVED
PROJECT NO. TA 91-0023/041/047/049			GUAM PRESERVATION TRUST	
CONTRACT NO.			P.O. BOX 3036 AGANA, GUAM 96910 TEL: 648-1125 FAX: 648-1125	
DESIGNED BY: ESS			INARAJAN VILLAGE HISTORIC RESTORATION PEDRO ASANOMA HOUSE	
DRAWN BY: CVA			GUAM	
CHECKED BY: ESS			ELECTRICAL/TV/TEL DIAGRAMS, NOTES & SYMBOLS LIST	
RECOMMENDED APPROVAL				DATE:
GUAM PRESERVATION TRUST				DATE:
GRC ASSOCIATES ARCHITECTS - PLANNERS - ENGINEERS			DRAWER NO:	DATE:
			DRAWING NUMBER:	E-1
			SHEET	11 OF 12